

H200 Tail Winch

200,000 lbs (90,718 kg)

FEATURES & BENEFITS

- Infinitely variable speed control
- Integral, extreme-duty 3-roller fairlead
- Reel In, Low-Speed, Low-Lock for precise load control
- Autospeed motor control system with internal load sense circuit
- Drive-Away function for hooking up to and driving away from load until ready for winching (1st & 2nd gear)

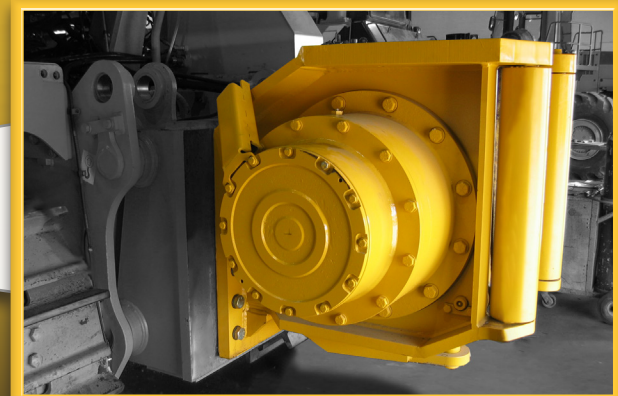
APPLICATIONS

- Heavy Equipment Recovery
- Steep-Slope Equipment Recovery
- Pipeline Construction
- Mining
- *Caterpillar: D9T*
- *Komatsu: D275*
- *Consult factory for fitment on additional tractors*

SPECS & OPTIONS

Unit Weight	7,040 lbs (3,193 kg) <small>(BASE UNIT WEIGHT)</small>
Gear Ratio	500:1
Power Type	Open-loop adapted for winch control
Motor	Automatic, Variable Displacement, Bent-Axis, Hydraulic Piston Motor
Rope diameter & Storage	1 1/2 in (38 mm) - 210 ft (64 m) <small>(Rope Length (ISO 19472:2006))</small>
Drum Release	STD: 1st and 2nd Gear Drive-Away
Braking System	STD: Brake Valve & Static Brake with Over-running Clutch
Cable Management	STD: 3-Roller Extreme-Duty Fairlead OPT: Fourth Roller

Consult factory for additional options.



www.paccarwinch.com
800 EAST DALLAS BROKEN ARROW, OK 74012
TEL (918) 251-8511

H200 Tail Winch

200,000 lbs (90,718 kg)

PERFORMANCE & DIMENSIONS

