

PARTS LIST SECTION

**CARCO MODEL 60-PS, PSM AND PSC WINCH
WITH INTERNAL HYDRAULICS**

FOR

JOHN DEERE 750 TRACTOR AND 755 LOADER
JOHN DEERE 850 TRACTOR AND 855 LOADER

| | Page |
|--|----------------|
| BEVEL GEAR SHAFT | 18 |
| BEVEL GEAR AND BEVEL PINION CARRIER ASSY. | 8A |
| BRAKE CONTROL (PS, SPRING APPLIED) | 28 |
| BRAKE CONTROL (PSM AND PSC, MANUAL) | 27 |
| BRAKE CYLINDER | 29 |
| BRAKE SHAFT, BRAKE BAND AND LINING | 21 |
| CLUTCH | 20 |
| CONTROL GROUP (CONTROL STANDS, CONTROL CABLES, PRESSURE GAUGE) | 4, 5, 6, 7 |
| CONTROL GROUP—ENCLOSED CAB (CONTROL STANDS, CONTROL CABLES, PRESSURE GAUGE) | 4A, 5A, 6A, 7A |
| CONTROL STAND COMPONENTS (POWER SHIFT) | 30 |
| CONTROL STAND COMPONENTS (POWER SHIFT W/FREE SPOOL) | 31 |
| CONTROL STAND COMPONENTS (MANUAL BRAKE) | 32 |
| CONTROL STAND COMPONENTS (POWERSHIFT)—ENCLOSED CAB | 8 |
| CONTROL VALVE | 12-13 |
| DRIVE SHAFT ASSEMBLY COMPONENTS | 2 |
| DRUM SHAFT STANDARD (NO FREE SPOOL) | 23 |
| DRUM SHAFT (WITH FREE SPOOL) | 26 |
| FAIRLEAD | 34-35 |
| HYDRAULIC TUBING AND FITTINGS | 14-15 |
| IDLER SHAFT (NO FREE SPOOL) | 22 |
| IDLER SHAFT (WITH FREE SPOOL) | 24-25 |
| INTEGRAL ARCH ASSEMBLY | 36 |
| MOUNTING GROUP WITH OR WITHOUT ARCH (750 & 755) | 3 |
| MOUNTING GROUP WITH OR WITHOUT ARCH (850 & 855) | 3A |
| PUMP GROUP (PUMP, TUBING, FILTER) | 16-17 |
| PRESSURE GAUGE KIT COMPONENTS | 33 |
| WINCH CASE | 10-11 |

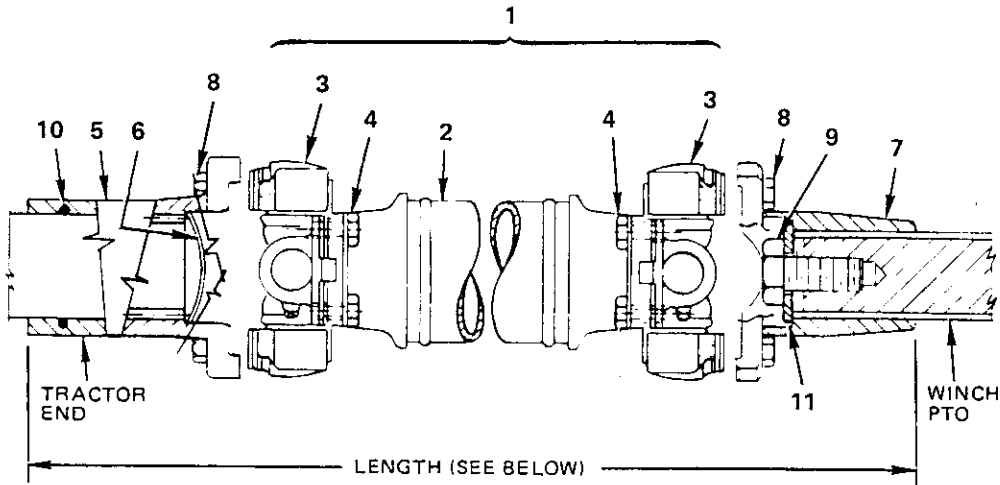
Note: Purchased parts, such as bearings and oil seals may be substituted with parts of equal quality on the manufacturer's recommendation, and with the approval of Pacific Car and Foundry Company.

ATTENTION: Be sure to give correct part number, part name and complete serial number of winch when ordering. Also name and model of the tractor on which the winch is mounted.

CARCO WINCH PRODUCTS

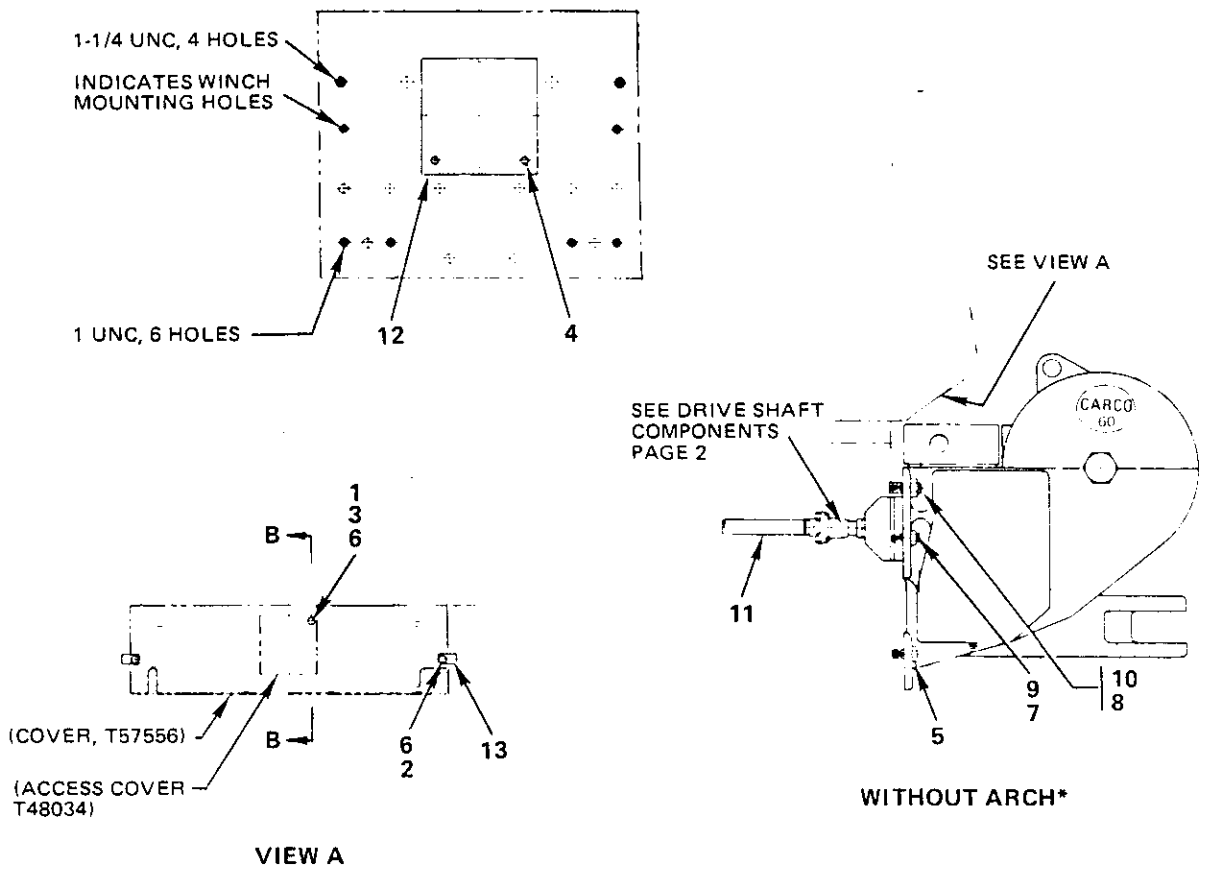
A DIVISION OF PACCAR / 1400 NORTH 4TH STREET, RENTON, WA 98055 U.S.A. (206) 251-7834/TELEX 32-8942

CARCO MODEL 60-PS, PSM & PSC WINCH
 DRIVE LINE ASSEMBLY—PAGE 2
 J.D. 750 TRACTOR & 755 LOADER
 J.D. 850 TRACTOR & 855 LOADER



| REF. | CARCO PART NO. | NAME AND DESCRIPTION | QUAN. PER UNIT |
|------|----------------|--|----------------|
| 1 | 52026-01 | Double U-Joint and Tube Assembly (JD 750, 755) | 1 |
| | 52026-02 | Double U-Joint and Tube Assembly (JD 850) | 1 |
| | 52026-03 | Double U-Joint and Tube Assembly (JD 855) | 1 |
| 2 | 52026-04 | Tube Assembly Only (JD 750, 755) | 1 |
| | 52026-05 | Tube Assembly Only (JD 850) | 1 |
| | 52026-06 | Tube Assembly Only (JD 855) | 1 |
| 3 | 16297-34 | Spider and Bearing Assembly (MECH. 114-3152) | 2 |
| 4 | 16297-35 | Cap Screw (MECH. 4569 J) | 8 |
| 5 | 51246-5 | Yoke Assembly, Tractor End | 1 |
| 6 | 16230-6 | Expansion Plug (DORMAN P27S) | 1 |
| 7 | 51494 | Yoke Assembly, Winch End | 1 |
| 8 | 16399-0506 | Cap Screw (5/16 UNF x 3/4 H.H.) | 8 |
| 9 | 16047-1010 | Cap Screw (5/8 UNC x 1-1/4 H.H.) | 1 |
| 10 | 16262-327 | O-Ring (NAT'L. 622730) | 1 |
| 11 | 16063-10 | Washer, Plain | 1 |
| - | 51247-1 | Driveline Assembly (JD 750, 755) | 1 |
| - | 51247-2 | Driveline Assembly (JD 850) | 1 |
| - | 51247-3 | Driveline Assembly (JD 855) | 1 |

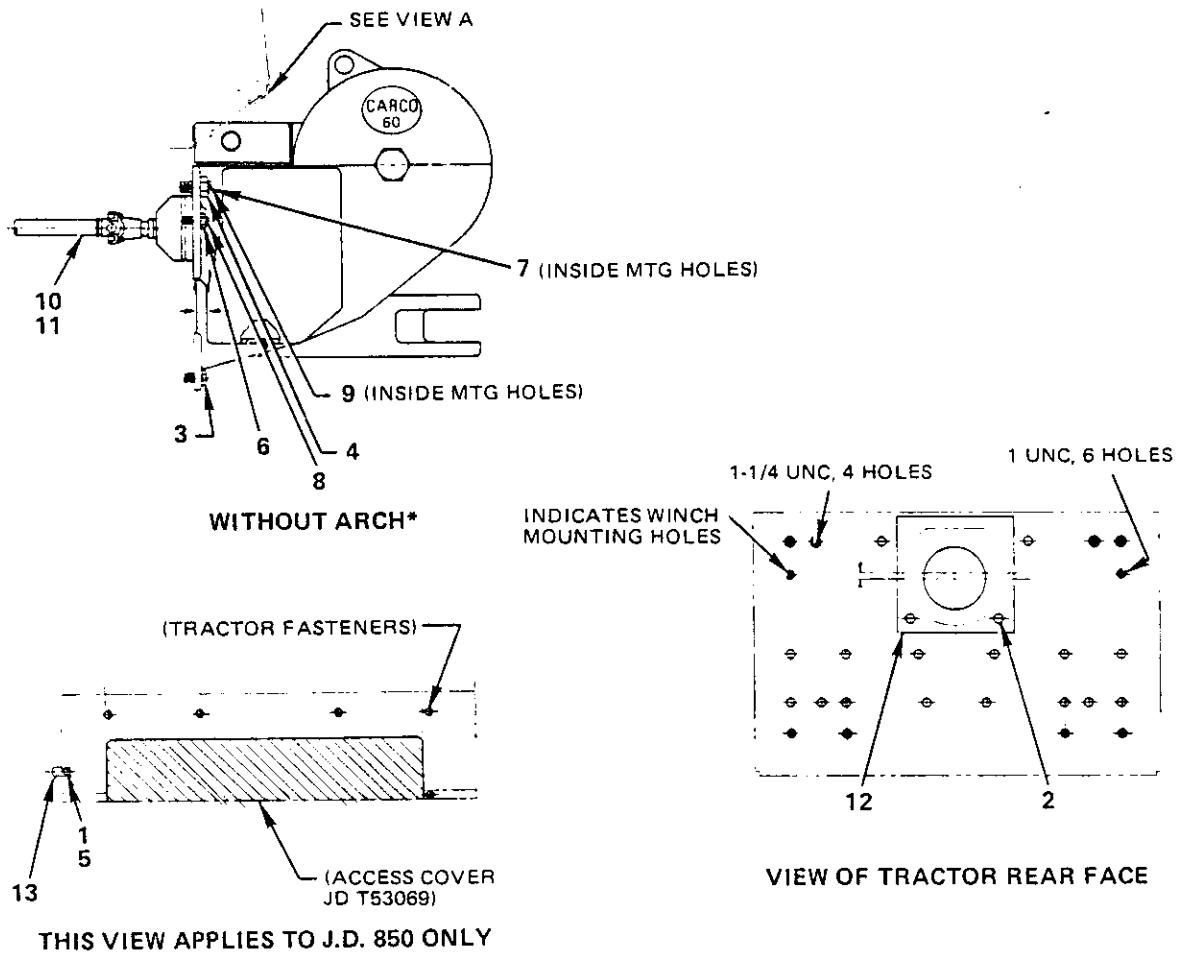
| DRIVELINE P/N | OVERALL LENGTH (IN.) | TRACTOR |
|---------------|----------------------|------------|
| 51247-1 | 46.71 | JD750, 755 |
| 51247-2 | 48.03 | JD850 |
| 51247-3 | 58.27 | JD855 |



JD 750 AND 755 MOUNTING GROUP NO. 52246 (WITH OR WITHOUT ARCH)

| REF. | CARCO PART NO. | NAME AND DESCRIPTION | QUAN. PER UNIT |
|------|-------------------|--------------------------------------|----------------|
| 1 | 16033-6 | Nut (3/8 UNC Hex) | 1 |
| 2 | 16047-608 | Cap Screw (3/8 UNC x 1 H.H.) | 2 |
| 3 | 16047-610 | Cap Screw (3/8 UNC x 1-1/4 H.H.) | 1 |
| 4 | 16047-1008 | Cap Screw (5/8 UNC x 1 H.H.) | 2 |
| 5 | 16047-1616 | Cap Screw (1 UNC x 2 H.H.) | 4 |
| 6 | 16067-6 | Lock Washer (3/8) | 3 |
| 7 | 16400-16 | Nut (1 UNC Hex) | 2 |
| 8 | 16400-20 | Nut (1-1/4 UNC Hex) | 2 |
| 9 | 45050-1623 | Stud | 2 |
| 10 | 45050-2028 | Stud | 2 |
| 11 | 51247-1 | Drive Shaft Assembly (See Page 2) | 1 |
| 12 | 51259-1 | Cover Plate | 1 |
| 13 | 51954 | Tab, Weld | 2 |
| —* | 53299 (Not Shown) | Integral Arch Assembly (See Page 36) | 1 |

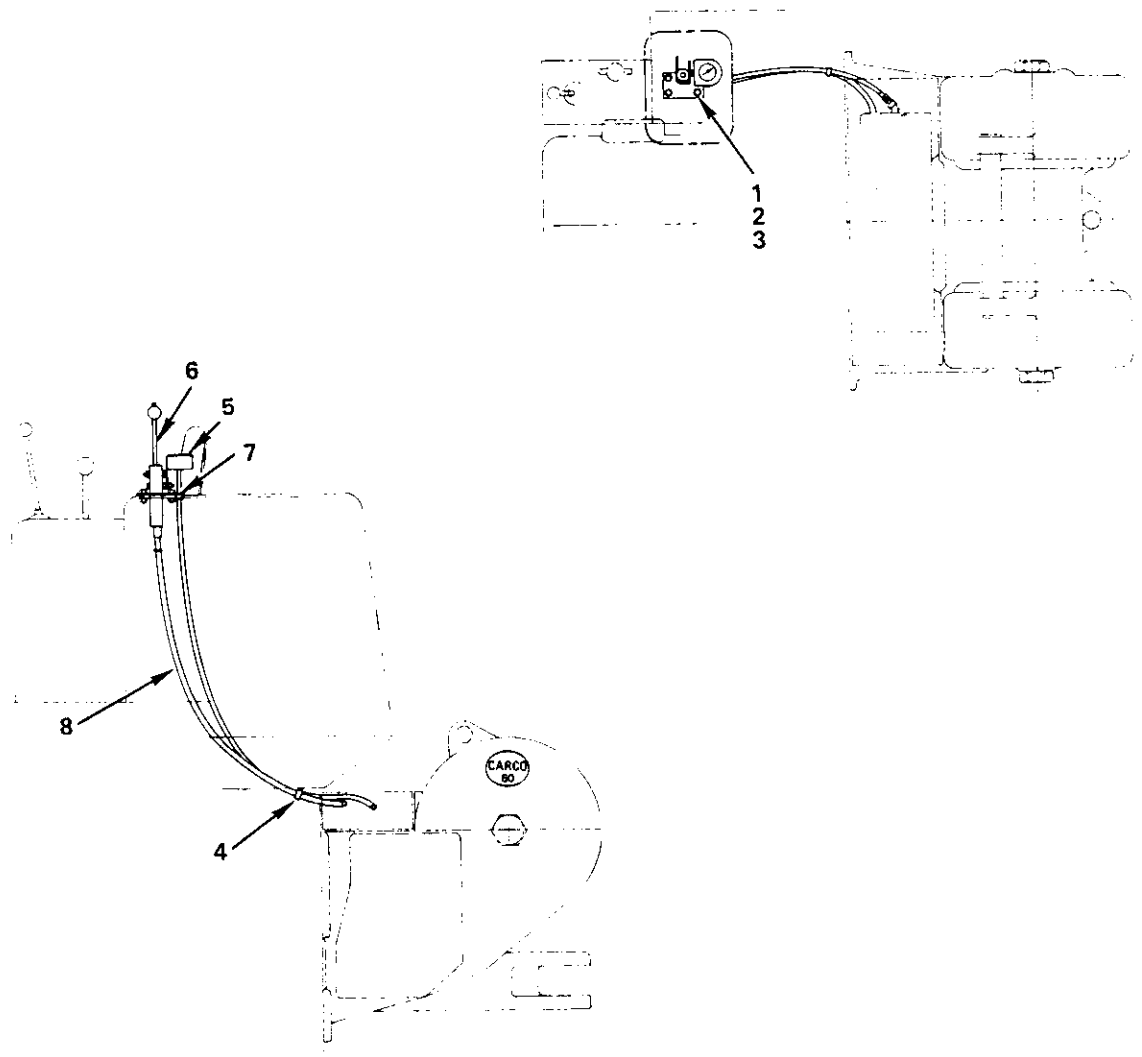
CARCO MODEL 60-PS, PSM & PSC WINCH
 MOUNTING GROUP PARTS LIST—PAGE 3A
 J.D. 850 TRACTOR & 855 LOADER



J.D. 850 AND 855 MOUNTING GROUP NO. 52184, 52697 (WITH OR WITHOUT ARCH)

| REF. | CARCO PART NO. | NAME AND DESCRIPTION | QUAN. PER UNIT |
|------|-------------------|---|----------------|
| 1 | 16047-608 | Cap Screw (3/8 UNC x 1 H.H., J.D. 850 only) | 1 |
| 2 | 16047-1008 | Cap Screw (5/8 UNC x 1 H.H.) | 2 |
| 3 | 16047-1616 | Cap Screw (1 UNC x 2 H.H.) | 4 |
| 4 | 16047-2016 | Cap Screw (1-1/4 UNC x 2 H.H.) | 2 |
| 5 | 16067-6 | Lock Washer (3/8, J.D. 850 only) | 1 |
| 6 | 16400-16 | Nut (1 UNC Hex) | 2 |
| 7 | 16400-20 | Nut (1-1/4 UNC Hex) | 2 |
| 8 | 45050-1624 | Stud | 2 |
| 9 | 45050-2028 | Stud | 2 |
| 10 | 51247-2 | Drive Shaft Assembly (J.D. 850 only) | 1 |
| 11 | 51247-3 | Drive Shaft Assembly (J.D. 855 only) | 1 |
| 12 | 51259-3 | Cover Plate | 1 |
| 13 | 51954 | Weld Tab (J.D. 850 only) | - 1 |
| -* | 53299 (Not Shown) | Integral Arch Assembly (See Page 36) | 1 |

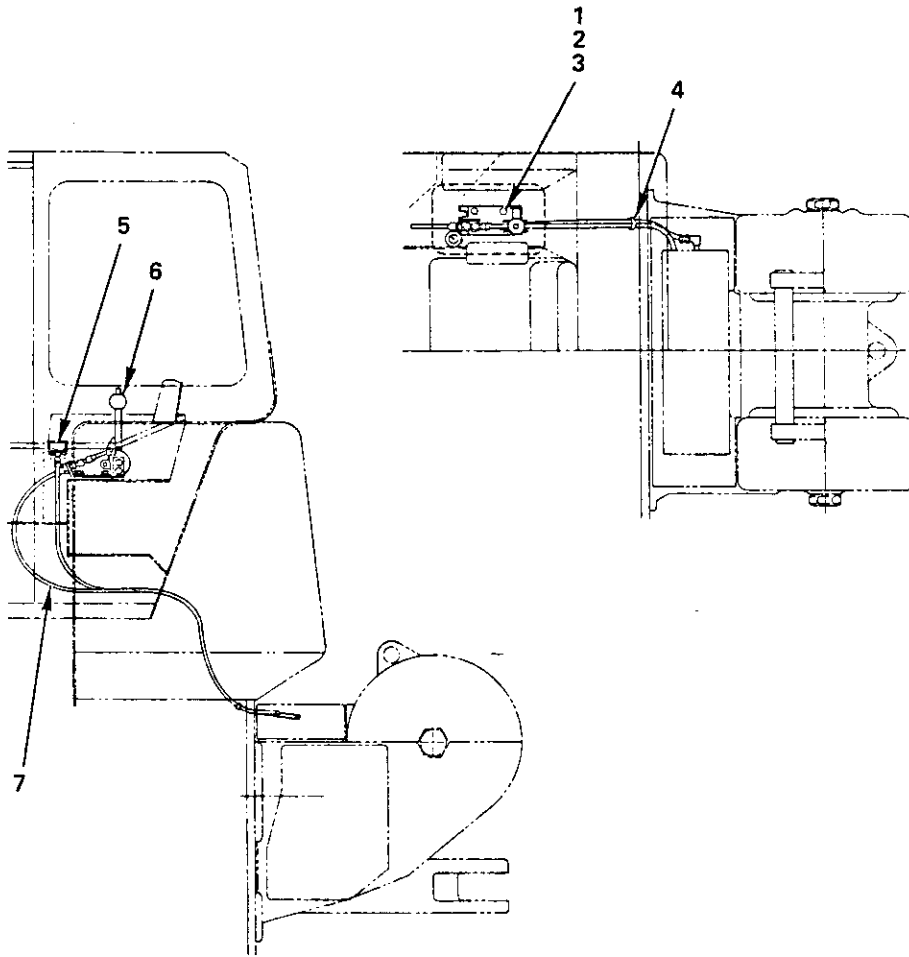
CARCO MODEL 60-PS WINCH
 CONTROL GROUP PARTS LIST—PAGE 4
 J.D. 750 TRACTOR & 755 LOADER
 J.D. 850 TRACTOR & 855 LOADER



CONTROL GROUP PS (WITHOUT FREE SPOOL) NO. 53405

| REF. | CARCO PART NO. | NAME AND DESCRIPTION | QUAN. PER UNIT |
|------|----------------|--|----------------|
| 1 | 16033-6 | Nut (3/8 UNC Hex) | 4 |
| 2 | 16047-608 | Cap Screw (3/8 UNC x 1 H.H.) | 4 |
| 3 | 16067-6 | Lock Washer (3/8) | 4 |
| 4 | 16459-3 | Strap, Retaining | 1 |
| 5 | 48700-120 | Pressure Gauge Kit (See Page 33) | 1 |
| 6 | 49001-3 | Stand, Power Shift Control (See Page 30) | 1 |
| 7 | 16528-0001 | Grommet | 1 |
| 8 | 52000-084 | Cable, Power Shift Control | 1 |

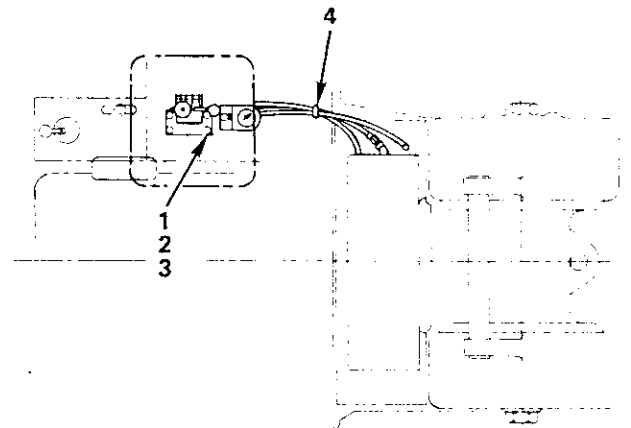
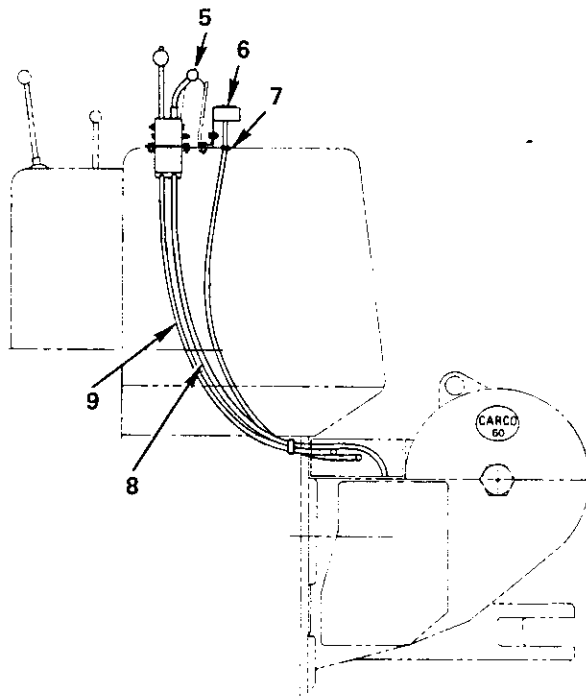
CARCO MODEL 60-PSM & PSC WINCH
 CONTROL GROUP PARTS LIST—PAGE 4A
 ENCLOSED ONE DOOR CAB
 J.D. 750 TRACTOR & 755 LOADER
 J.D. 850 TRACTOR & 855 LOADER



CONTROL GROUP NO. 52467 (POWERSHIFT WITH ENCLOSED CAB)

| REF. | CARCO PART NO. | NAME AND DESCRIPTION | QUAN. PER UNIT |
|------|-------------------|--|----------------------|
| 1 | 16033-6 | Nut, Hex (3/8) | 4 |
| 2 | 16047-612 | Cap Screw, Hex (3/8 UNC x 1-1/2) | 4 |
| 3 | 16067-6 | Lock Washer (3/8) | 4 |
| 4 | 16459-1 | Strap, Retaining | 1 |
| 5 | 51480-1 | Pressure Gauge Kit (See Page 33) | 1 |
| 6 | 52460 | Stand, Powershift Control (See Page 8) | 1 |
| 7 | 52000-096 | Cable, Powershift Control | 1 |
| - | 51600 (Not Shown) | Plate, Powershift Instruction | 1 |

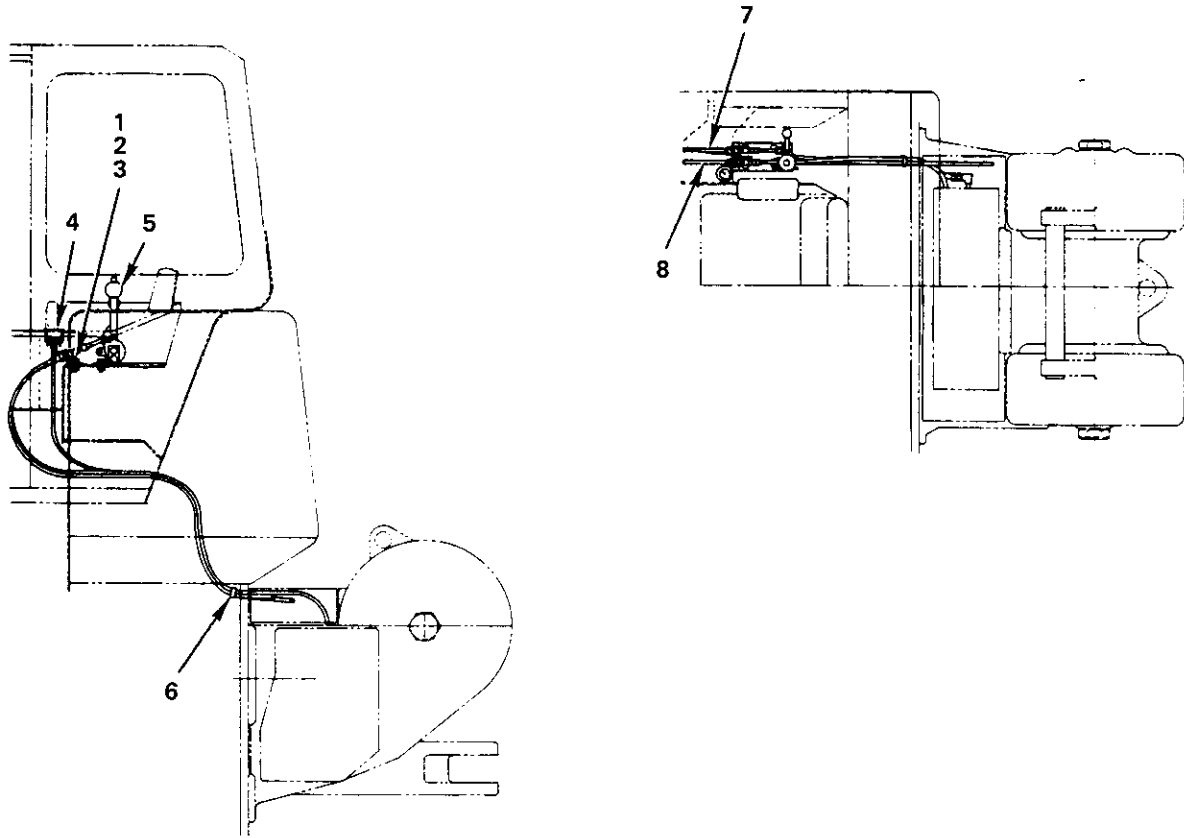
CARCO MODEL 60-PS WINCH
 CONTROL GROUP PARTS LIST—PAGE 5
 J.D. 750 TRACTOR & 755 LOADER
 J.D. 850 TRACTOR & 855 LOADER



CONTROL GROUP (PS WITH FREE SPOOL) NO. 53406

| REF. | CARCO PART NO. | NAME AND DESCRIPTION | QUAN. PER UNIT |
|------|----------------|---|----------------|
| 1 | 16033-6 | Nut (3/8 UNC Hex) | 5 |
| 2 | 16047-608 | Cap Screw (3/8 UNC x 1 H.H.) | 5 |
| 3 | 16067-6 | Lock Washer (3/8) | 5 |
| 4 | 16459-3 | Strap, Retaining | 1 |
| 5 | 49805-8 | Stand, Powershift/Freespool Control (See Page 31) | 1 |
| 6 | 48944-120 | Pressure Gauge Kit (See Page 33) | 1 |
| 7 | 16528-001 | Grommet | 1 |
| 8 | 52400-084 | Cable, Free Spool Control | 1 |
| 9 | 52000-090 | Cable, Power Shift Control | 1 |

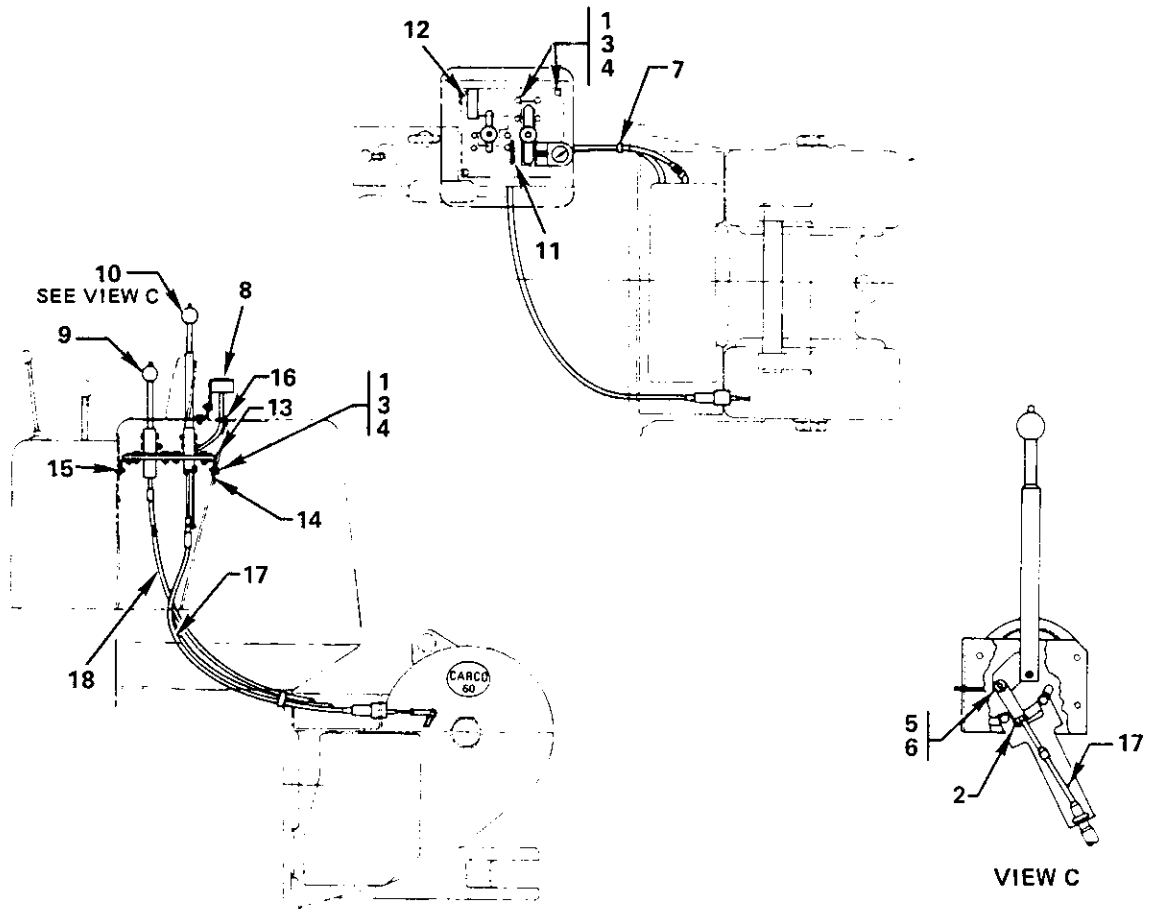
CARCO MODEL 60-PSM & PSC WINCH
 CONTROL GROUP PARTS LIST—PAGE 5A
 ENCLOSED ONE DOOR CAB
 J.D. 750 TRACTOR & 755 LOADER
 J.D. 850 TRACTOR & 855 LOADER



CONTROL GROUP NO. 52468 (POWERSHIFT/FREE SPOOL WITH ENCLOSED CAB)

| REF. | CARCO PART NO. | NAME AND DESCRIPTION | QUAN. PER UNIT |
|------|-------------------|--|----------------------|
| 1 | 16047-612 | Cap Screw, Hex (3/8 x 1-1/2) | 4 |
| 2 | 16067-6 | Lock Washer (3/8) | 4 |
| 3 | 16033-6 | Nut, Hex (3/8) | 4 |
| 4 | 51480-1 | Pressure Gauge Kit (See Page 33) | 1 |
| 5 | 52451 | Stand, Powershift With Freespool Control (See Page 8) | 1 |
| 6 | 16459-1 | Strap, Retaining | 1 |
| 7 | 52400-108 | Cable, Freespool Control | 1 |
| 8 | 52000-096 | Cable, Powershift Control | 1 |
| — | 51607 (Not Shown) | Plate, Freespool Instruction | 1 |
| — | 51600 (Not Shown) | Plate, Powershift Instruction | 1 |

CARCO MODEL 60-PSM & PSC WINCH
 CONTROL GROUP PARTS LIST—PAGE 6
 J.D. 750 TRACTOR & 755 LOADER
 J.D. 850 TRACTOR & 855 LOADER

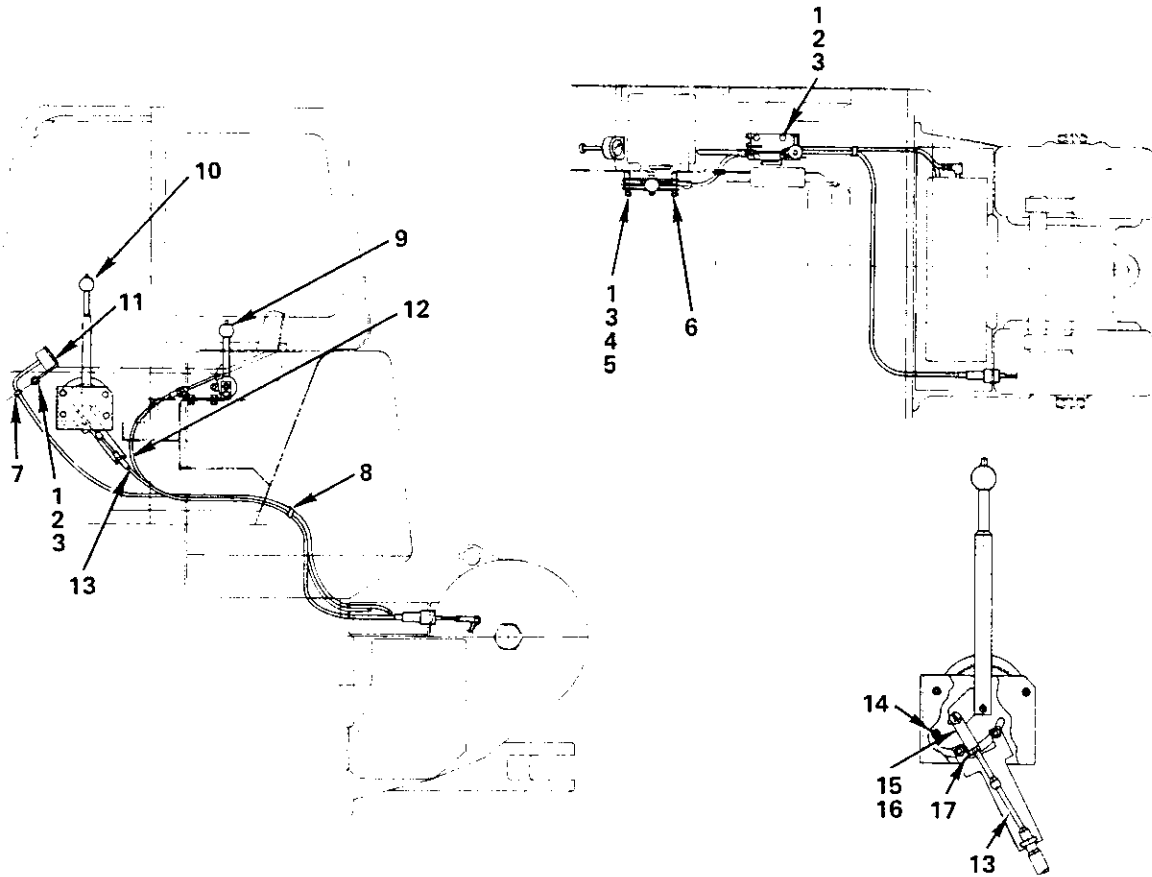


CONTROL GROUP (PSM AND PSC WITHOUT FREE SPOOL) NO. 53407

| REF. | CARCO PART NO. | NAME AND DESCRIPTION | QUAN. PER UNIT |
|------|----------------|--|----------------------|
| 1 | 16033-6 | Nut (3/8 UNC Hex) | 17 |
| 2 | 16044-6 | Jam Nut (3/8 UNF Hex) | 1 |
| 3 | 16047-608 | Cap Screw (3/8 UNC x 1 H.H.) | 17 |
| 4 | 16067-6 | Lock Washer (3/8) | 17 |
| 5 | 16245-6 | Yoke (CLEVELAND 2708-4A) | 1 |
| 6 | 16246-6 | Pin Assembly (CLEVELAND 2708-1/2-4A) | 1 |
| 7 | 16459-1 | Strap, Retaining | 1 |
| 8 | 48944-120 | Pressure Gauge Kit (See Page 33) | 1 |
| 9 | 53598-03 | Stand, Power Shift Control (See Page 30) | 1 |
| 10 | 49434-7 | Stand, Brake Control (See Page 32) | 1 |
| 11 | 49446 | Plate, Instruction (Manual Brake) | 1 |
| 12 | 53588 | Plate, Instruction (Powershift) | 1 |
| 13 | 53385 | Plate, Mounting | 1 |
| 14 | 53389-1 | Angle | 1 |
| 15 | 53389-2 | Angle | 1 |
| 16 | 16528-0001 | Grommet | 1 |
| 17 | 48850-102 | Cable, Brake Control | 1 |
| 18 | 52000-084 | Cable, Power Shift Control | 1 |

NOTE: See page 29 for Brake Control Group.

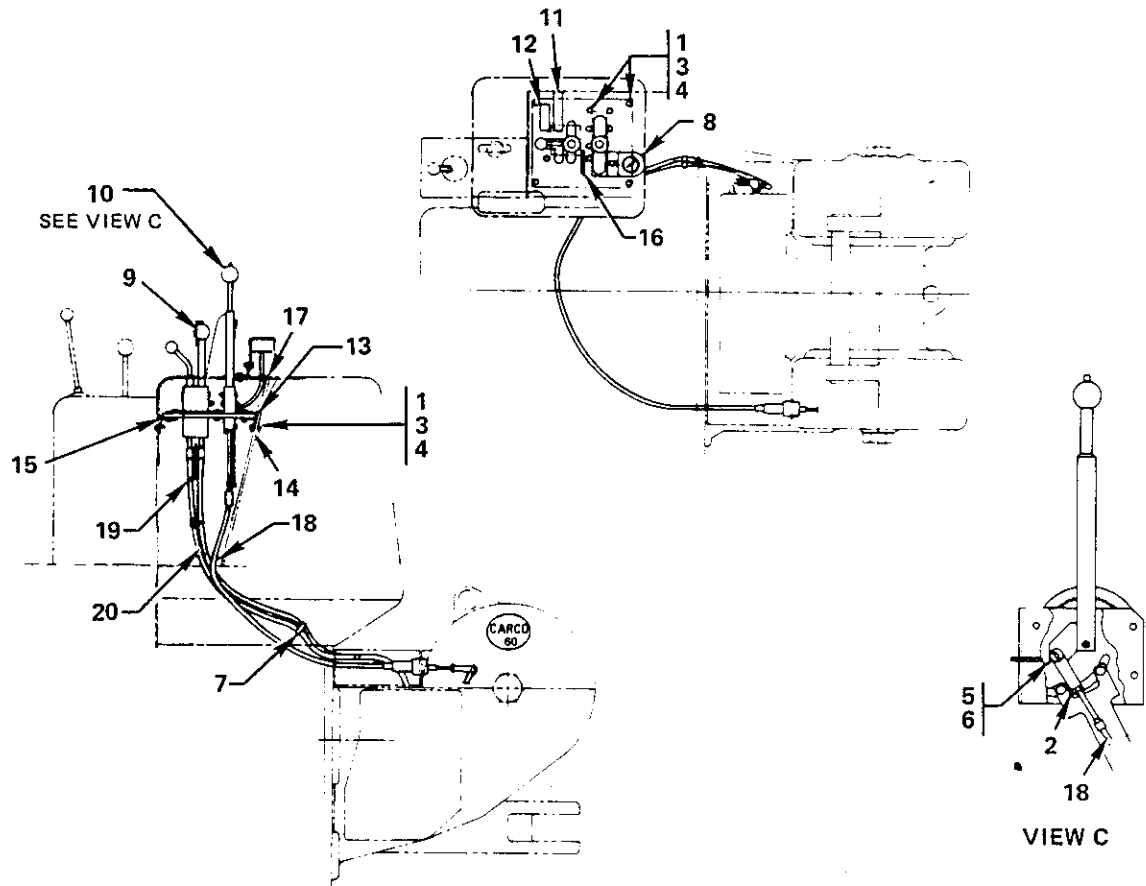
CARCO MODEL 60-PSM & PSC WINCH
 CONTROL GROUP PARTS LIST—PAGE 6A
 ENCLOSED ONE DOOR CAB
 J.D. 750 TRACTOR & 755 LOADER
 J.D. 850 TRACTOR & 855 LOADER



CONTROL GROUP NO. 52469 (POWERSHIFT/MANUAL BRAKE WITH ENCLOSED CAB)

| REF. | CARCO PART NO. | NAME AND DESCRIPTION | QUAN. PER UNIT |
|------|-------------------|---|----------------|
| 1 | 16033-6 | Nut, Hex (3/8) | 8 |
| 2 | 16047-608 | Cap Screw, Hex (3/8) | 5 |
| 3 | 16067-6 | Lock Washer (3/8) | 8 |
| 4 | 16047-628 | Cap Screw, Hex (3/8 UNC x 3-1/2) | 3 |
| 5 | 16064-6 | Washer, Plain | 3 |
| 6 | 46126-604 | Spacer | 3 |
| 7 | 16528-0001 | Grommet | 2 |
| 8 | 16459-1 | Strap, Retaining | 1 |
| 9 | 52460 | Stand, Power Shift Control (See Page 8) | 1 |
| 10 | 49434-8 | Stand, Brake Control (See Page 32) | 1 |
| 11 | 48700-120 | Pressure Gauge Kit (See Page 33) | 1 |
| 12 | 52000-096 | Cable, Power Shift Control | 1 |
| 13 | 48850-102 | Cable, Brake Control | 1 |
| 14 | 46126-610 | Spacer | 1 |
| 15 | 16245-6 | Yoke, Machined | 1 |
| 16 | 16246-6 | Pin Assembly, Yoke | 1 |
| 17 | 16044-6 | Nut, Hex Jam | 1 |
| - | 49446 (Not Shown) | Plate, Manual Brake Instruction | 1 |
| - | 53588 (Not Shown) | Plate, Power Shift Instruction | 1 |

CARCO MODEL 60-PSM & PSC WINCH
CONTROL GROUP PARTS LIST—PAGE 7
J.D. 750 TRACTOR & 755 LOADER
J.D. 850 TRACTOR & 855 LOADER

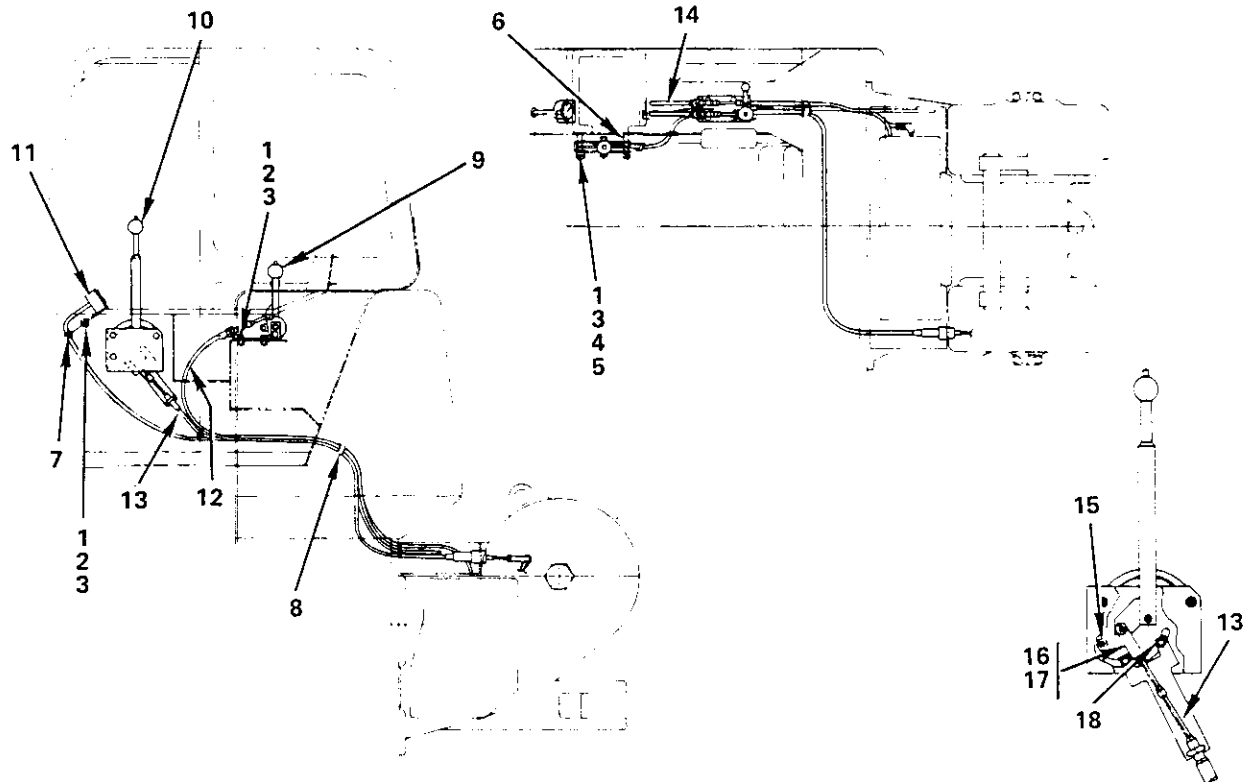


CONTROL GROUP (PSM AND PSC WITH FREE SPOOL) NO. 53408

| REF. | CARCO PART NO. | NAME AND DESCRIPTION | QUAN. PER UNIT |
|------|----------------|--|----------------|
| 1 | 16033-6 | Nut (3/8 UNC Hex | 17 |
| 2 | 16044-6 | Jam Nut (3/8 UNF Hex) | 1 |
| 3 | 16047-608 | Cap Screw (3/8 UNC x 1 H.H.) | 17 |
| 4 | 16067-6 | Lock Washer (3/8) | 17 |
| 5 | 16245-6 | Yoke (CLEVELAND 2708-4A) | 1 |
| 6 | 16246-6 | Pin Assembly (CLEVELAND 2708-1/2-4A) | 1 |
| 7 | 16459-1 | Strap, Retaining | 1 |
| 8 | 48944-120 | Pressure Gauge Kit (See Page 33) | 1 |
| 9 | 53599-05 | Stand, Power Shift and Free Spool Control (See Page 31) | 1 |
| 10 | 49434-7 | Stand, Brake Control (See Page 32) | 1 |
| 11 | 53588 | Plate, Instruction (Powershift) | 1 |
| 12 | 51607 | Plate, Instruction (Freespool) | 1 |
| 13 | 53385 | Plate, Mounting | 1 |
| 14 | 53389-1 | Angle | 1 |
| 15 | 53389-2 | Angle | 1 |
| 16 | 49446 | Plate, Instruction (Manual Brake) | 1 |
| 17 | 16528-0001 | Grommet | 1 |
| 18 | 48850-102 | Cable, Brake Control | 1 |
| 19 | 52400-090 | Cable, Free Spool Control | 1 |
| 20 | 52000-084 | Cable, Power Shift Control | 1 |

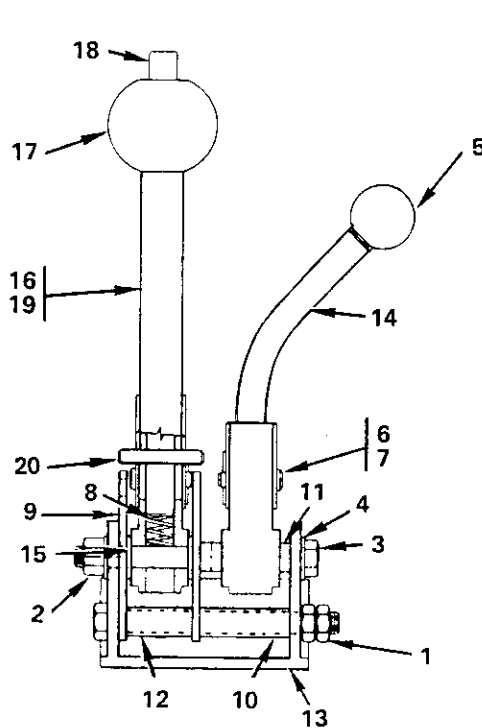
NOTE: See page 29 for Brake Control Group.

CARCO MODEL 60-PSM & PSC WINCH
 CONTROL GROUP PARTS LIST—PAGE 7A
 ENCLOSED ONE DOOR CAB
 J.D. 750 TRACTOR & 755 LOADER
 J.D. 850 TRACTOR & 855 LOADER

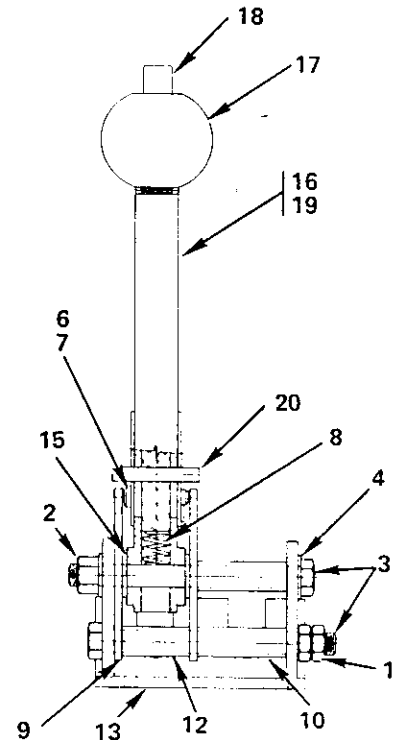


CONTROL GROUP NO. 52470
 (POWERSHIFT/FREE SPOOL WITH MANUAL BRAKE WITH ENCLOSED CAB)

| REF. | CARCO PART NO. | NAME AND DESCRIPTION | QUAN. PER UNIT |
|------|-------------------|--|----------------|
| 1 | 16033-6 | Nut, Hex (3/8) | 8 |
| 2 | 16047-608 | Cap Screw (3/8 UNC x 1) | 5 |
| 3 | 16067-6 | Lock Washer (3/8) | 8 |
| 4 | 16047-628 | Cap Screw (3/8 UNC x 3-1/2) | 3 |
| 5 | 16064-6 | Washer, Plain | 3 |
| 6 | 46126-604 | Spacer | 3 |
| 7 | 16528-0001 | Grommet | 2 |
| 8 | 16459-1 | Strap, Retaining | 1 |
| 9 | 52451 | Stand, Power Shift and Free Spool Control (See Page 7A) | 1 |
| 10 | 49434-8 | Stand, Brake Control (See Page 32) | 1 |
| 11 | 48700-120 | Pressure Gauge Kit (See Page 33) | 1 |
| 12 | 52000-096 | Cable, Power Shift Control | 1 |
| 13 | 48850-102 | Cable, Brake Control | 1 |
| 14 | 52400-108 | Cable, Free Spool Control | 1 |
| 15 | 46126-610 | Spacer | 1 |
| 16 | 16245-6 | Yoke, Machined | 1 |
| 17 | 16246-6 | Pin Assembly, Yoke | 1 |
| 18 | 16044-6 | Nut, Hex Jam | 1 |
| - | 49446 (Not Shown) | Plate, Brake Instruction | 1 |
| - | 53588 (Not Shown) | Plate, Power Shift Instruction | 1 |
| - | 51607 (Not Shown) | Plate, Free Spool Instruction | 1 |



POWERSHIFT W/FREE SPOOL — 52451

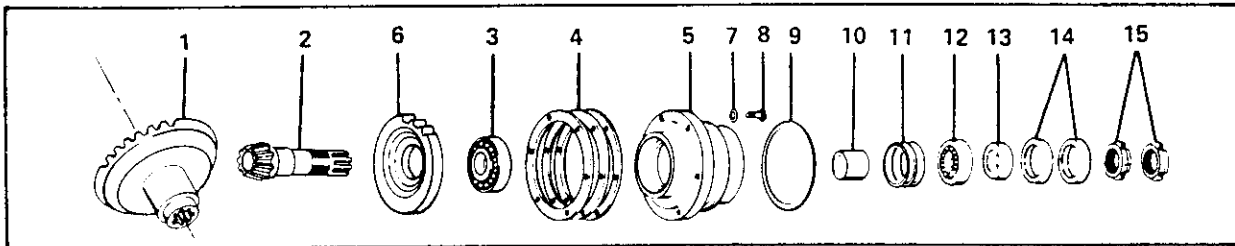


POWERSHIFT — 52460

CONTROL STAND WITH ENCLOSED CAB

| REF. | CARCO PART NO. | NAME AND DESCRIPTION | NO. | NO. |
|------|----------------|---|----------------------|----------------------|
| | | | 52451 | 52460 |
| | | | QUAN. PER UNIT | QUAN. PER UNIT |
| 1 | 16033-6 | Nut (3/8 UNC Hex) | 2 | 2 |
| 2 | 16039-66 | Nut, Lock (ESNA 21NE-066, 3/8 UNC) | 1 | 1 |
| 3 | 16047-632 | Cap Screw (3/8 UNC x 4 H.H.) | 2 | 2 |
| 4 | 16064-6 | Washer (3/8) | 2 | 2 |
| 5 | 16236-4 | Knob (REID B-8) | 1 | — |
| 6 | 16287-3 | Pin, Clevis (LEITZKE 1/4 x 1) | 2 | 1 |
| 7 | 16381-13 | Pin, Hitch (WESTERN WIRE WW-13) | 2 | 1 |
| 8 | 41403 | Spring | 1 | 1 |
| 9 | 49007 | Plate, Lock | 2 | 2 |
| 10 | 49804-1 | Spacer | 1 | 2 |
| 11 | 49804-2 | Spacer | 3 | — |
| 12 | 49804-3 | Spacer | 1 | 1 |
| 13 | 52421 | Base | 1 | 1 |
| 14 | 52452 | Lever | 1 | — |
| 15 | 16009-6 | Bearing, Thrust (BUNTING TW37) | 2 | 2 |
| 16 | 52456 | Handle Assembly (Consists of Items 17, 18, 19, 20) | 1 | 1 |
| 17 | 41404 | Ball | 1 | 1 |
| 18 | 49004 | Rod, Push | 1 | 1 |
| 19 | 52457 | Handle, Control | 1 | 1 |
| 20 | 16294-824 | Pin, Spring (1/4 x 1-1/2) | 2 | 2 |

CARCO MODEL 60-PS, PSM & PSC WINCH
 BEVEL GEAR & PINION GROUP—PAGE 8A
 J.D. 750 TRACTOR & 755 LOADER
 J.D. 850 TRACTOR & 855 LOADER



| REF. | CARCO PART NO. | NAME AND DESCRIPTION | QUAN. PER UNIT |
|------|----------------|--|----------------|
| 1 | 50806 | Gear, Bevel (Standard Speed – PS, PSM) (JOHN DEERE 750, 755 only) | 1 |
| | 50809 | Gear, Bevel (Standard Speed – PS, PSM) (JOHN DEERE 850, 855 only) | 1 |
| | 50828 | Gear, Bevel (Slow Speed – PSC) | 1 |
| 2 | 50805 | Pinion, Bevel (Standard Speed – PS, PSM) (JOHN DEERE 750, 755 only) | 1 |
| | 50808 | Pinion, Bevel (Standard Speed – PS, PSM) (JOHN DEERE 850, 855 only) | 1 |
| | 50827 | Pinion, Bevel (Slow Speed – PSC) | 1 |
| 3 | 15173 | Cup | 1 |
| | 15175 | Cone | 1 |
| 4 | 16237 | Shim Set (TIMKEN 29) | 1 |
| 5 | 50914 | Carrier | 1 |
| 6 | 51054 | Pinion, Pump Drive | 1 |
| 7 | 16064-8 | Washer (1/2) | 6 |
| 8 | 16017-810 | Cap Screw (1/2 UNC x 1-1/4 H.H.) | 6 |
| 9 | 16262-438 | O-Ring (NAT'L. 622765) | 1 |
| 10 | 45084-5 | Spacer | 1 |
| 11 | 45088 | Shim Set | 1 |
| 12 | 15148 | Cup | 1 |
| | 15149 | Cone | 1 |
| 13 | 44348 | Sleeve | 1 |
| 14 | 16343-11 | Seal, Oil (NAT'L. 455079) | 2 |
| 15 | 16041-8 | Nut, Lock (TIMKEN N-08) | 2 |

NOTE: On original factory installation, Item 10 is sized for correct bearing adjustment. For field repair, order 45284-5 spacer and 45088 shim set.

OPTIONAL GEAR SETS

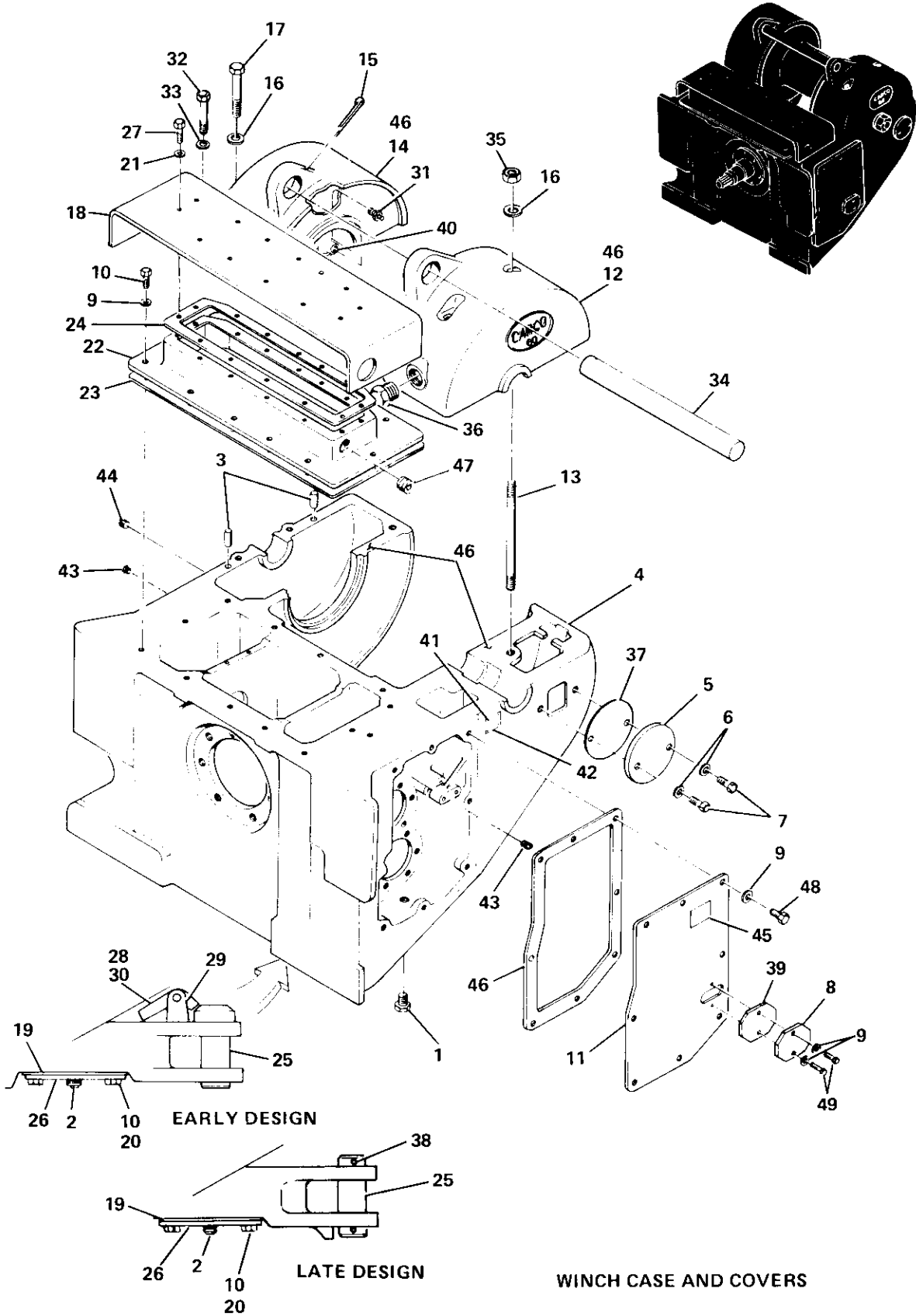
Optional Bevel Gear set combinations are offered to provide a range of line speeds for various winching requirements. Prior to ordering optional gear sets, contact factory to see if the gear set is recommended for the application.

| BEVEL GEAR | | BEVEL PINION | | GEAR SET REF. NO. | GEAR SET LETTER DESIGNATION* | RATIO |
|------------|-------|--------------|-------|-------------------|---------------------------------|--------|
| Part No. | Teeth | Part No. | Teeth | | | |
| 50828 | 43 | 50827 | 11 | 52058-106 | F (Slow Speed) | 3.91/1 |
| 50803 | 35 | 50802 | 9 | 52058-101 | A | 3.89/1 |
| 50806 | 35 | 50805 | 11 | 52058-102 | B (Std. Speed) (JD 750, 755) | 3.18/1 |
| 50809 | 32 | 50808 | 13 | 52058-103 | C (Std. Speed) (JD 850, 855) | 2.46/1 |
| 50822 | 31 | 50821 | 16 | 52058-104 | D | 1.94/1 |
| 50825 | 29 | 50824 | 19 | 52058-105 | E | 1.53/1 |

*The gear set letter designation, located on the winch serial number identification tag, determines the gear set originally installed in the winch.

(This Page Intentionally Left Blank)

CARCO MODEL 60-PS, PSM & PSC WINCH
 PARTS LIST SECTION—PAGE 10
 WINCH CASE AND COVERS

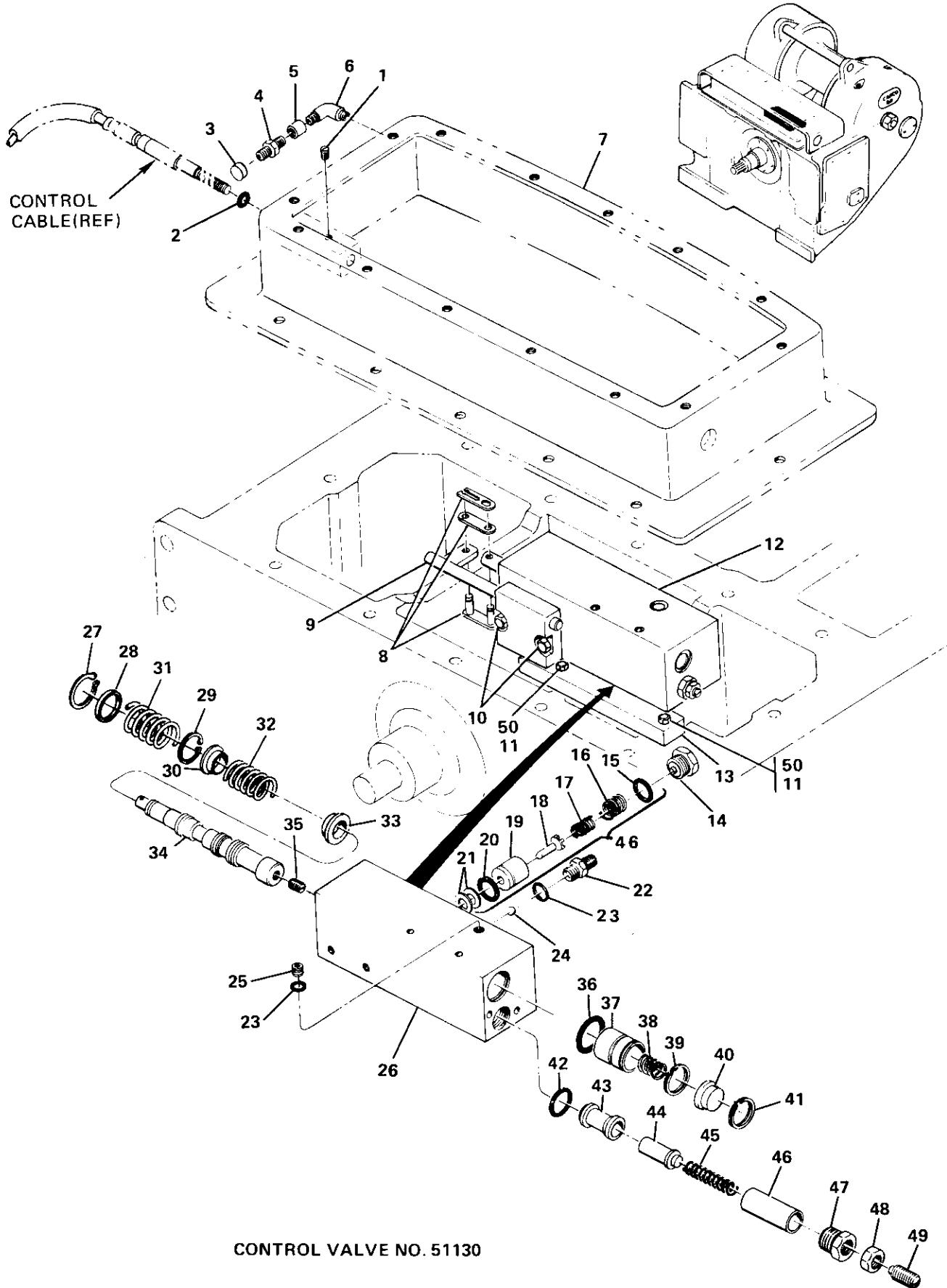


WINCH CASE AND COVERS

CARCO MODEL 60-PS, PSM & PSC WINCH
PARTS LIST SECTION—PAGE 11
WINCH CASE AND COVERS

| REF. | CARCO PART NO. | NAME AND DESCRIPTION | QUAN. PER UNIT |
|------|----------------|--|----------------------|
| 1 | 16169-8 | Plug (1/2 NPT Sq. Hd.) | 1 |
| 2 | 16168-16 | Plug (1 NPTF Mag. Sq. Hd.) | 1 |
| 3 | 16290-1616 | Pin, Dowel (1/2 x 1) | 2 |
| 4 | NSS | Case Complete (Includes Items 12 and 14) | 1 |
| 5 | 42048 | Cover | 1 |
| 6 | 16064-10 | Washer (5/8) | 2 |
| 7 | 16047-1008 | Cap Screw (5/8 UNC x 1 H.H.) | 2 |
| 8 | 44816 | Cover | 1 |
| 9 | 16064-8 | Washer (1/2) | 22 |
| 10 | 16047-810 | Cap Screw (1/2 UNC x 1-1/4 H.H.) | 30 |
| 11 | 45972 | Cover | 1 |
| 12 | NSS | Cover, Brake Case | 1 |
| 13 | 45050-1655 | Stud (1x1-1/2 UNC) | 2 |
| 14 | NSS | Cover, Gear Case | 1 |
| 15 | 16288-1272 | Pin, Cotter (3/8 x 4-1/2) | 1 |
| 16 | 16064-16 | Washer (1) | 4 |
| 17 | 16047-1628 | Cap Screw (1 UNC x 3-1/2 H.H.) | 2 |
| 18 | 52321 | Cover | 1 |
| 19 | 51890 | Gasket, Filter Cover | 1 |
| 20 | 16067-8 | Washer, Lock (1/2) | 16 |
| 21 | 16064-6 | Washer (3/8) | 14 |
| 22 | Reference Only | Housing (See Page 12) | 1 |
| 23 | 51144 | Gasket | 1 |
| 24 | 51535 | Gasket | 1 |
| 25 | 52037 | Pin, Drawbar – Early Design | 1 |
| | 53101-0002 | Pin, Drawbar – Late Design | 1 |
| 26 | 51889 | Cover, Suction Filter | 1 |
| 27 | 16047-608 | Cap Screw (3/8 UNC x 1 H.H.) | 14 |
| 28 | 16246-8 | Pin, Yoke (CLEVELAND 2708½-6A) | 1 |
| 29 | 52084 | Bracket, Support | 1 |
| 30 | 52085 | Latch | 1 |
| 31 | 16249-1 | Vent, Plug (ALEMITE 317400) | 1 |
| 32 | 16047-1220 | Cap Screw (3/8 UNC x 2-1/2 H.H.) | 4 |
| 33 | 16064-12 | Washer (3/8) | 4 |
| 34 | 49043-1 | Guard, Cable | 1 |
| 35 | 16033-16 | Nut (1 UNC Hex) | 2 |
| 36 | 16220-38 | Plug (WHITE 1604-136-Y) | 1 |
| 37 | 44833 | Gasket | 1 |
| 38 | 16288-1248 | Pin, Cotter (3/8 x 3) | 2 |
| 39 | 44815 | Gasket | 1 |
| 40 | 16150-2 | Elbow (1/8 NPT 90° Street) | 1 |
| 41 | 16055-5 | Screw, Drive (#10 x 3/8 Type U) | 4 |
| 42 | 52126 | Plate, Name | 1 |
| 43 | 16167-6 | Plug (3/8 NPT Hex Soc.) | 2 |
| 44 | 16169-20 | Plug (1-1/4 NPT Sq. Hd.) | 1 |
| 45 | 49044 | Plate, Instruction | 1 |
| 46 | 16453-5 | Sealant (SILASTIC No. 732 RTV), 5 oz | 1 |
| 47 | 52987 | Plug | 1 |
| 48 | 16047-808 | Screw, Hex Hd. Cap (1/2 x 1 UNC) | 8 |
| 49 | 16047-812 | Screw, Hex Hd. Cap (1/2 x 1-1/2 UNC) | 2 |

CARCO MODEL 60-PS, PSM & PSC WINCH
PARTS LIST SECTION -PAGE 12
CONTROL VALVE

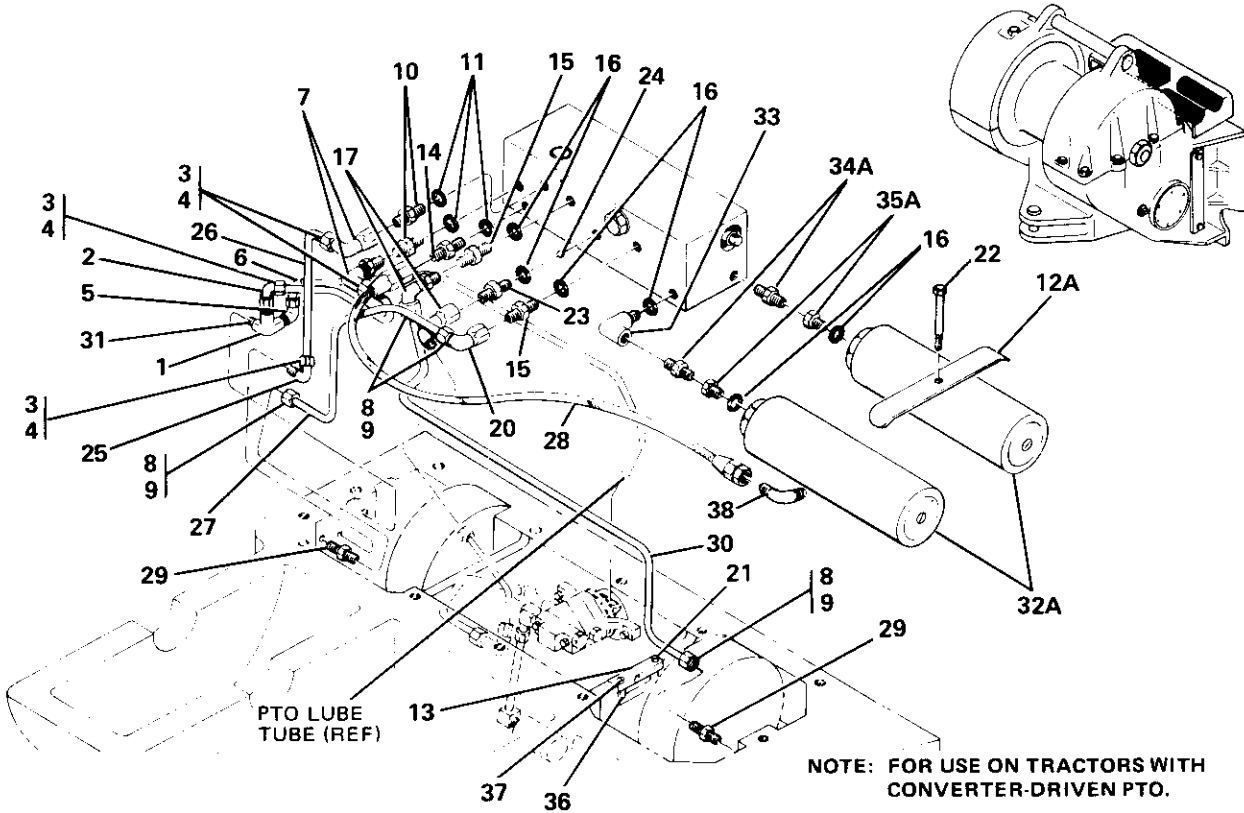


CONTROL VALVE NO. 51130

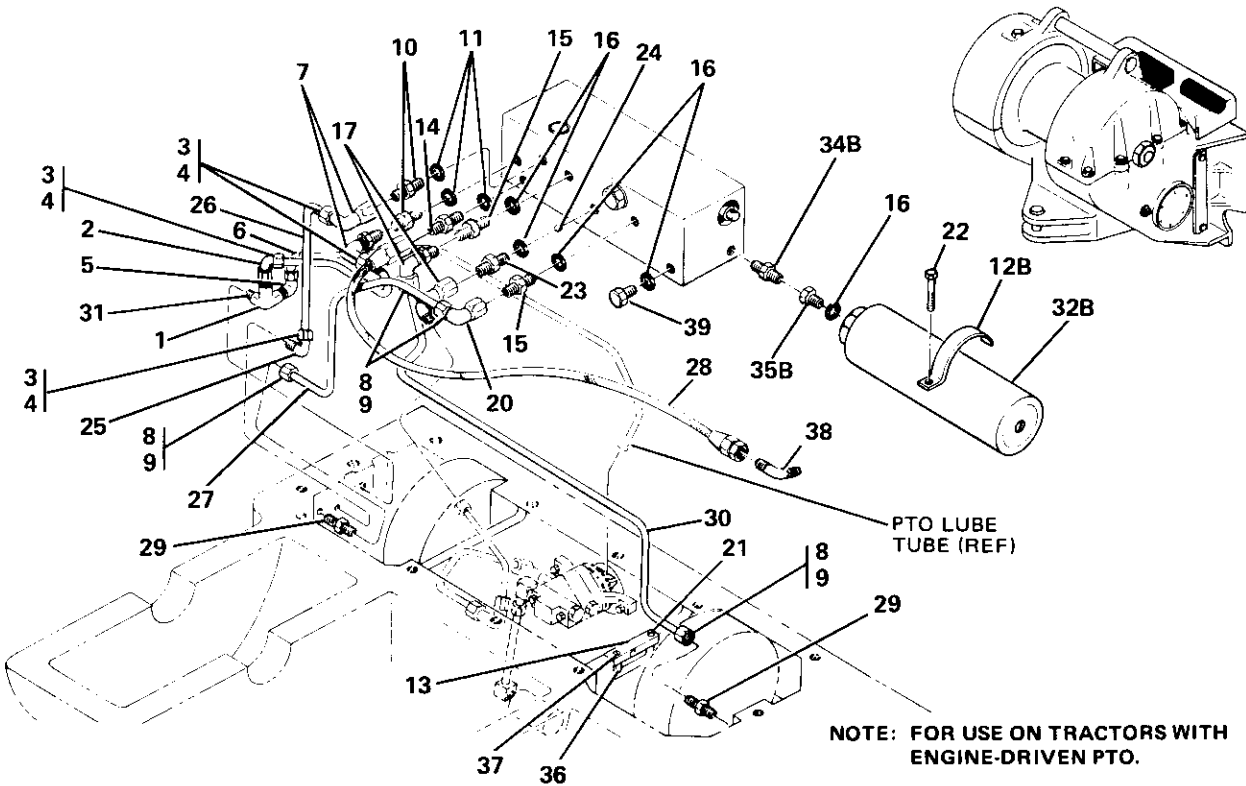
CARCO MODEL 60-PS, PSM & PSC WINCH
PARTS LIST SECTION—PAGE 13
CONTROL VALVE

| REF. | CARCO PART NO. | NAME AND DESCRIPTION | QUAN. PER UNIT |
|------|----------------|--|----------------------|
| 1 | 16056-612 | Set Screw (3/8 UNC x 3/4 Hex Soc. Cup Pt.) | 1 |
| 2 | 16262-115 | O-Ring (NAT'L. 622713) | 1 |
| 3 | 16445-4 | Cap Nut (AEROQUIP 21029-4) | 1 |
| 4 | 16129-44 | Connector (WTHRD. C5205 x 4 x 4) | 1 |
| 5 | 16362-44 | Snubber (CHEMIQUIP 25B-D) | 1 |
| 6 | 16171-44 | Elbow (WTHRD. 3400 x 4) | 1 |
| 7 | 51124-050 | Valve Housing | 1 |
| 8 | 16364-2040 | Connecting Link (ANSI 2040) | 1 |
| 9 | 51865 | Cable Guide | 1 |
| 10 | 16047-610 | Cap Screw (3/8 UNC x 1-1/4 H.H.) | 2 |
| 11 | 16047-612 | Cap Screw (3/8 UNC x 1-1/2 H.H.) | 2 |
| 12 | 51130 | Control Valve | 1 |
| 13 | 51698-1 | Support Assembly | 1 |
| 14 | 51883-1 | Retainer Assembly | 1 |
| 15 | 16262-912 | O-Ring (NAT'L. 600501) | 1 |
| 16 | 51894 | Spring | 1 |
| 17 | 52392 | Spring | 1 |
| 18 | 51164 | Accumulator Check Piston | 1 |
| 19 | 51886 | Seat | 1 |
| 20 | 16262-116 | O-Ring (NAT'L. 622714) | 1 |
| 21 | 51881-10 | Shim Set | 1 |
| 22 | 52289 | Connector | 1 |
| 23 | 16262-908 | O-Ring (NAT'L. 600503) | 2 |
| 24 | 16471-8 | Ball Check, Nylon Type 101 | 1 |
| 25 | 16496-8 | Plug (PARKER 8HP50N-S) | 1 |
| 26 | NSS | Valve Body (Order 51130 Control Valve) | 1 |
| 27 | 16314-150 | Retaining Ring (TRUARC N5000-150) | 1 |
| 28 | 45622 | Washer | 1 |
| 29 | 16313-75 | Retaining Ring (TRUARC 5100-75) | 1 |
| 30 | 45623 | Spring Stop | 1 |
| 31 | 45549 | Outer Spring | 1 |
| 32 | 45548 | Inner Spring | 1 |
| 33 | 44259-1 | Spring Stop | 1 |
| 34 | NSS | Valve Spool (Order 51130 Control Valve) | 1 |
| 35 | 16057-608 | Set Screw (3/8 UNF x 1/2 Hex Soc. Cup Pt.) | 1 |
| 36 | 16262-215 | O-Ring (NAT'L. 622720) | 1 |
| 37 | NSS | Piston (Order 51130 Control Valve) | 1 |
| 38 | 45857 | Spring | 1 |
| 39 | 16308-131 | Retaining Ring (SPIROLOX RS-131) | 1 |
| 40 | 51154 | Spring Stop | 1 |
| 41 | 16305-157 | Retaining Ring (SPIROLOX RR-157) | 1 |
| 42 | 16262-210 | O-Ring (NAT'L. 622715) | 1 |
| 43 | NSS | Relief Valve Seal (Order Kit 52652) | 1 |
| 44 | NSS | Relief Valve Piston (Order Kit 52652) | 1 |
| 45 | 52719 | Spring (LEMPCO 9-1016-2) | 1 |
| 46 | 51132 | Relief Valve Tube | 1 |
| 47 | 51133 | Retaining Screw | 1 |
| 48 | 16044-12 | Jam Nut (3/4 UNF Hex) | 1 |
| 49 | 51135 | Adjusting Screw | 1 |
| 50 | 16064-6 | Washer (3/8) | 2 |
| -- | 52651 | Kit, Valve Spool (Consists of items 24, 27, 29, 31, 32, 35, 36, 38, 39, 41) | 1 |
| -- | 52652 | Kit, Relief Valve (Consists of items 42, 43, 44, 45, 46) | 1 |
| -- | 52653 | Kit, Accumulator Check Valve (Consists of items 15, 16, 17, 18, 19, 20, 21) | 1 |

CARCO MODEL 60-PS, PSM & PSC WINCH
 PARTS LIST SECTION—PAGE 14
 HYDRAULIC TUBING & FITTINGS



HYDRAULIC TUBING AND FITTINGS 51267

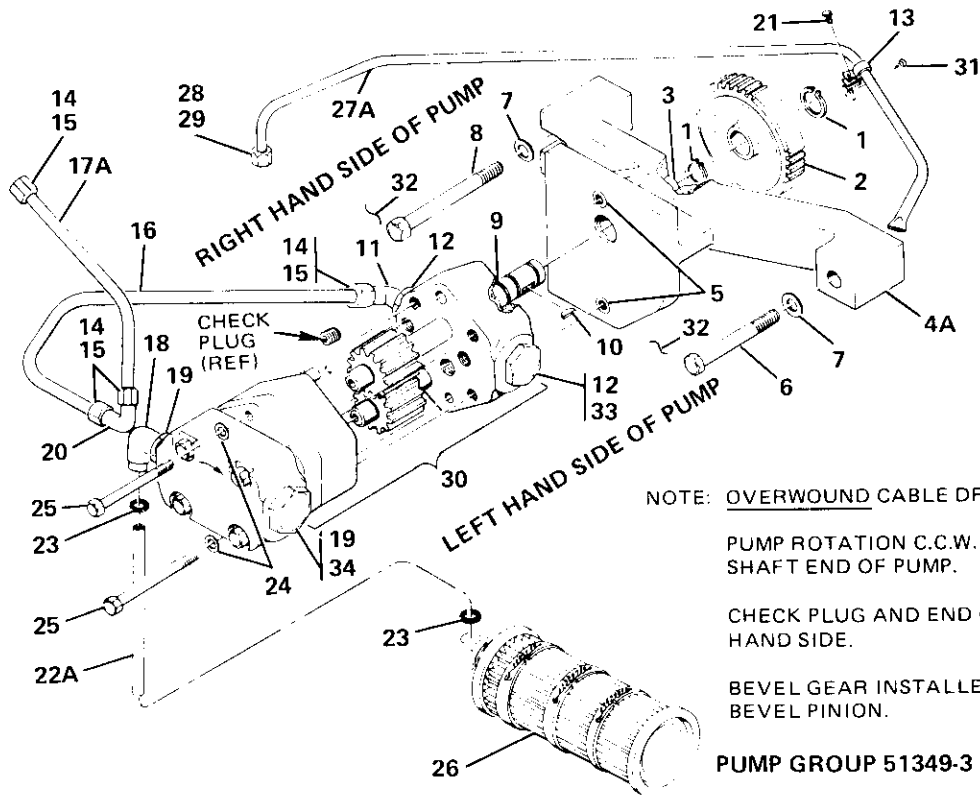


HYDRAULIC TUBING AND FITTINGS 52573

CARCO MODEL 60-PS, PSM & PSC WINCH
PARTS LIST SECTION—PAGE 15
HYDRAULIC TUBING & FITTINGS

| REF. | CARCO PART NO. | NAME AND DESCRIPTION | QUAN. PER UNIT |
|------|----------------|--|----------------------|
| 1 | 16497-0004 | Elbow (GRINELL 1109) | 1 |
| 2 | 16137-0064 | Elbow (WTHRD. 7405 x 6) | 1 |
| 3 | 16521-06 | Nut (PARKER BU6) | 4 |
| 4 | 16522-06 | Sleeve (PARKER TU6) | 4 |
| 5 | 16137-44 | Elbow (WTHRD. 7405 x 4 x 4) | 1 |
| 6 | 51957-04 | Brake Return Tube | 1 |
| 7 | 16485-0006 | Elbow (WTHRD. 7506 x 6) | 2 |
| 8 | 16521-08 | Nut (PARKER BU8) | 4 |
| 9 | 16522-08 | Sleeve (PARKER TU8) | 4 |
| 10 | 16481-0006 | Connector (WTHRD. 7315 x 6) | 2 |
| 11 | 16262-906 | O-Ring (NAT'L. 600593) | 3 |
| 12A | 51869 | Clamp | 1 |
| 12B | 52594 | Clamp | 1 |
| 13 | 51868 | Plate | 1 |
| 14 | 16113-46 | Connector (WTHRD. C5315 x 4 x 6) | 1 |
| 15 | 16481-8 | Connector (WTHRD. 7315 x 8) | 2 |
| 16 | 16262-908 | O-Ring (NAT'L. 600503) | 6 |
| 17 | 16476-8 | Elbow (7515 x 8) | 1 |
| 20 | 16485-0008 | Elbow (WTHRD. 7506 x 8) | 2 |
| 21 | 16047-407 | Cap Screw (1/4 UNC x 7/8 H.H.) | 1 |
| 22 | 16357-0820 | Shoulder Screw (1/2 UNC x 2-1/2 Hex. Soc. Hd.) | 1 |
| 23 | 52289 | Connector | 1 |
| 24 | 16471-8 | Ball Check | 1 |
| 25 | 16137-0066 | Elbow (WTHRD. 7405 x 6 x 6) | 1 |
| 26 | 51957-01 | Brake Pressure Tube | 1 |
| 27 | 51958-07 | Forward Clutch Tube | 1 |
| 28 | 53841-0001 | Hose Assembly | 1 |
| 29 | 16482-0086 | Connector (WTHRD. 7205 x 8) | 2 |
| 30 | 51958-10 | Reverse Clutch Tube | 1 |
| 31 | 16158-407 | Nipple (1/4 NPT x 7/8) | 1 |
| 32A | 16475-6 | Accumulator (GREER 847110, 150 PSI Nitrogen) | 2 |
| 32B | 16475-7 | Accumulator (GREER 847110, 50 PSI Nitrogen) | 1 |
| 33 | 16498-0086 | Elbow (WTHRD. C3459 x 8) | 1 |
| 34A | 16160-06 | Nipple (WTHRD. C3069 x 6) | 2 |
| 34B | 16160-06 | Nipple (WTHRD. C3069 x 6) | 1 |
| 35A | 16114-0086 | Adapter (WTHRD. C3269 x 8 x 6) | 2 |
| 35B | 16114-0086 | Adapter (WTHRD. C3269 x 8 x 6) | 1 |
| 36 | 46126-407 | Spacer | 1 |
| 37 | 16047-414 | Cap Screw (1/4 UNC x 1-3/4 H.H.) | 1 |
| 38 | 16144-44 | Connector (WTHRD. C5355 x 4 x 4) | 1 |
| 39 | 52574 | Orifice Plug | 1 |

CARCO MODEL 60-PS, PSM & PSC WINCH
 PARTS LIST SECTION—PAGE 16
 PUMP GROUP



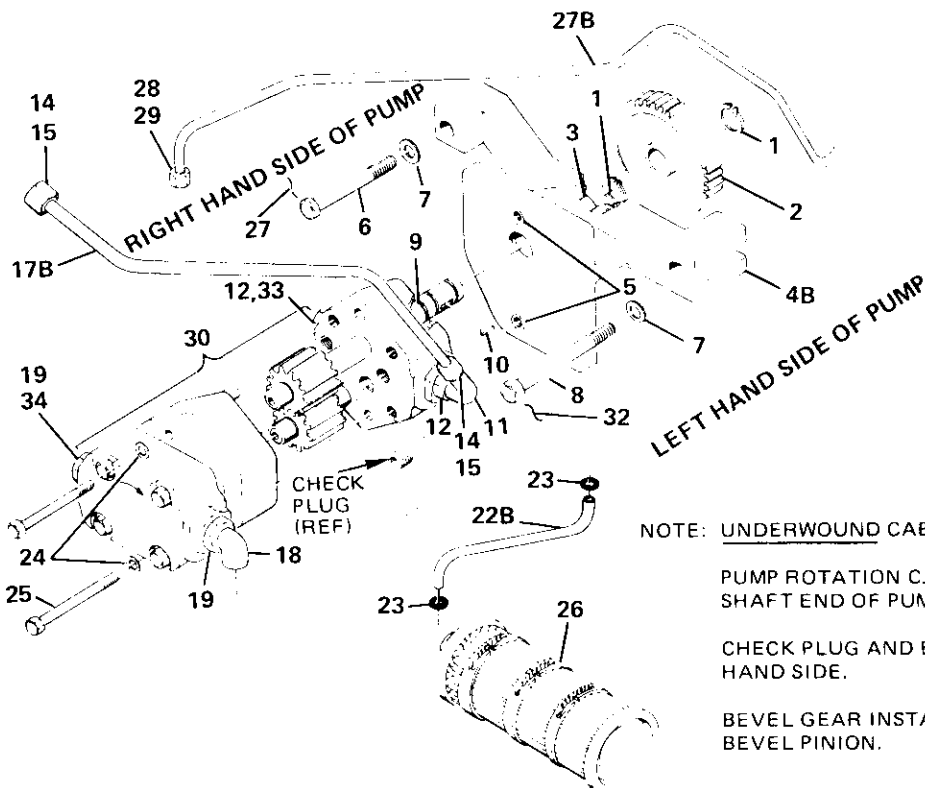
NOTE: OVERWOUND CABLE DRUM

PUMP ROTATION C.C.W. AS VIEWED FROM
 SHAFT END OF PUMP.

CHECK PLUG AND END CAP LOCATION, RIGHT
 HAND SIDE.

BEVEL GEAR INSTALLED ON GEAR SIDE OF
 BEVEL PINION.

PUMP GROUP 51349-3



NOTE: UNDERWOUND CABLE DRUM

PUMP ROTATION C.C.W. AS VIEWED FROM
 SHAFT END OF PUMP.

CHECK PLUG AND END CAP LOCATION, LEFT
 HAND SIDE.

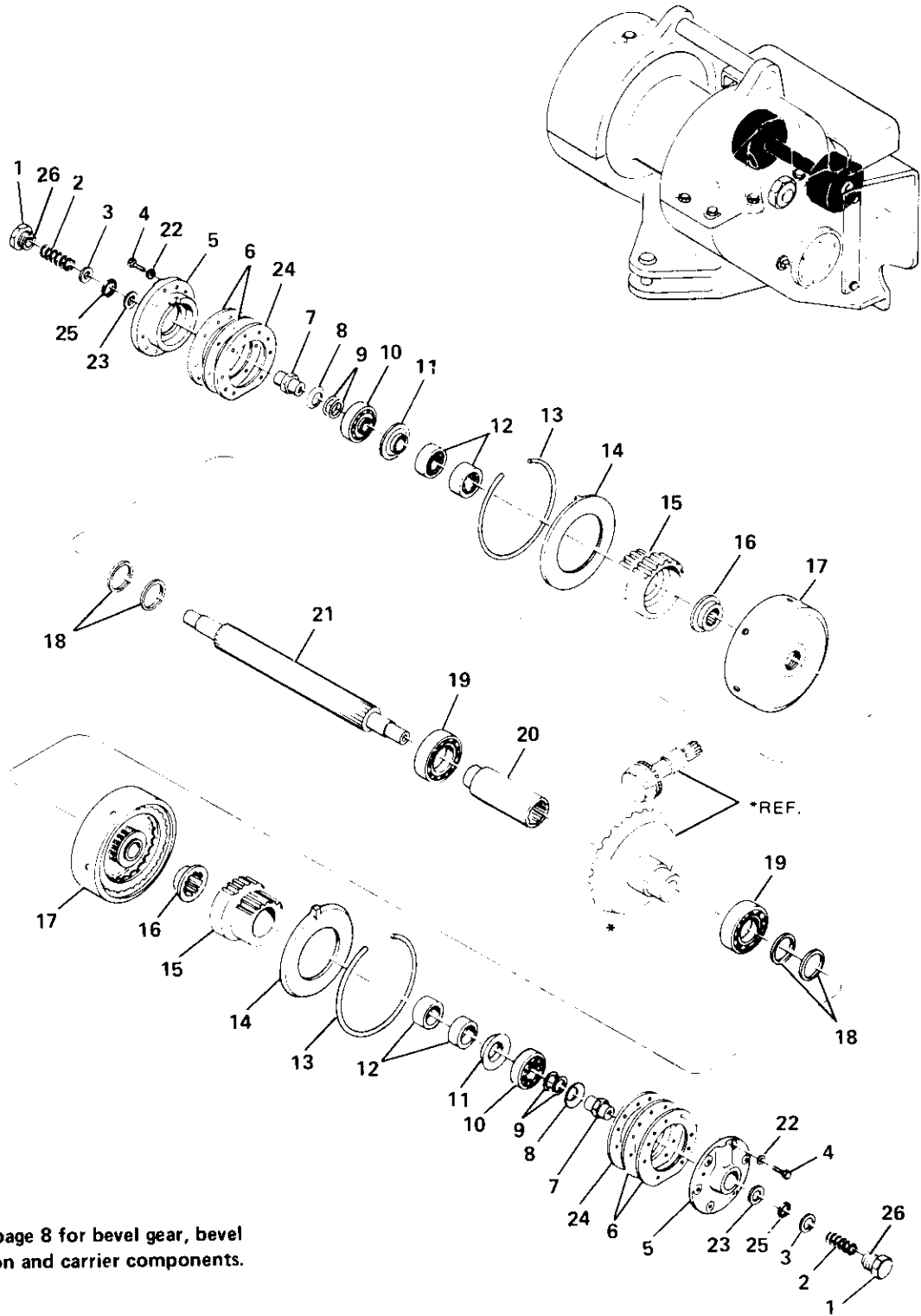
BEVEL GEAR INSTALLED ON BRAKE SIDE OF
 BEVEL PINION.

PUMP GROUP 51349-2

CARCO MODEL 60-PS, PSM & PSC WINCH
PARTS LIST SECTION—PAGE 17
PUMP GROUP

| REF. | CARCO PART NO. | NAME AND DESCRIPTION | QUAN. PER UNIT |
|------|----------------|---|----------------------|
| 1 | 16313-62 | Ring, Retaining (TRUARC 5100-62) | 2 |
| 2 | 51056 | Gear | 1 |
| 3 | 15305 | Bearing, Needle | 1 |
| 4A | 51525-1 | Mount Assembly (Includes Items 3 and 5) | 1 |
| 4B | 51526-1 | Mount Assembly | 1 |
| 5 | 16507-0003 | Insert, Threaded | 2 |
| 6 | 16024-15 | Cap Screw (3/8 UNC x 1-3/4 Dr. Hd.) | 1 |
| 7 | 16348-1 | Washer (CARR LANE CL-1-FW) | 2 |
| 8 | 16024-16 | Cap Screw (3/8 UNC x 2-1/4 Dr. Hd.) | 1 |
| 9 | 16284-95 | Seal, Pump Shaft (WEBSTER 151-35818) | 1 |
| 10 | 16226-7 | Key (WOODRUFF No. 3, 1/8 x 1/2) | 1 |
| 11 | 16476-8 | Elbow (WTHRD. 7515 x 8) | 1 |
| 12 | 16262-908 | O-Ring (NAT'L. 600503) | 2 |
| 13 | 16520-01 | Clamp, Swivel (ADEL 1789-X4-4) | 1 |
| 14A | 16521-08 | Nut (PARKER BU8) | 4 |
| 14B | 16521-08 | Nut | 2 |
| 15A | 16522-08 | Sleeve (PARKER TU8) | 4 |
| 15B | 16522-08 | Sleeve | 2 |
| 16 | 51958-13 | Tube, Pump | 1 |
| 17A | 51958-02 | Tube, Pressure | 1 |
| 17B | 51958-01 | Tube, Pressure | 1 |
| 18 | 16474-12 | Elbow (LENZ A-405-12) | 1 |
| 19 | 16262-912 | O-Ring (NAT'L. 600501) | 2 |
| 20 | 16509-08 | Elbow (WTHRD. 7505 x 8) | 1 |
| 21 | 16021-3 | Screw (10-24 UNC x 5/8 Rd. Hd.) | 1 |
| 22A | 51959-52 | Tube, Suction (0) | 1 |
| 22B | 51959-51 | Tube, Suction (0) | 1 |
| 23 | 16262-116 | O-Ring (NAT'L. 622714) | 2 |
| 24 | 16069-4 | Washer, Lock (1/4 Ext. Tooth) | 2 |
| 25 | 16047-428 | Cap Screw (1/4 UNC x 3-1/2 H.H.) | 2 |
| 26 | 16473 | Filter (MARVEL 620-5-M-200) | 1 |
| 27A | 51956-05 | Tube, PTO Lube | 1 |
| 27B | 51956-04 | Tube, PTO Lube | 1 |
| 28 | 16521-04 | Nut (PARKER BU4) | 1 |
| 29 | 16522-04 | Sleeve (PARKER TU4) | 1 |
| 30 | 53140-0001 | Pump (WEBSTER, CCW rotation) | 1 |
| 31 | 16055-15 | Screw, Tapping (1/4 x 1/2 Type F Fl. Hd.) | 1 |
| 32 | NSS | Lock Wire (16 Ga. x 18") | 1 |
| 33 | 16188-8 | Plug, Boss with O-Ring | 1 |
| 34 | 16166-12 | Plug, Boss with O-Ring | 1 |

CARCO MODEL 60-PS, PSM & PSC WINCH
 PARTS LIST SECTION—PAGE 18
 BEVEL GEAR SHAFT



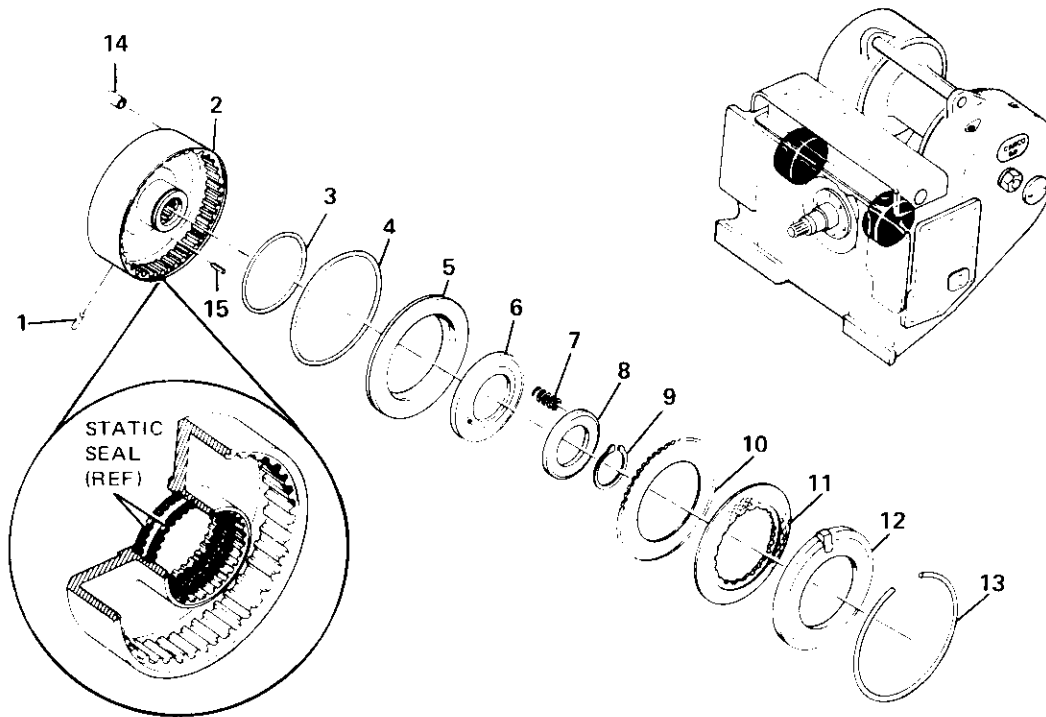
*See page 8 for bevel gear, bevel pinion and carrier components.

BEVEL GEAR SHAFT GROUP

CARCO MODEL 60-PS, PSM & PSC WINCH
PARTS LIST SECTION—PAGE 19
BEVEL GEAR SHAFT

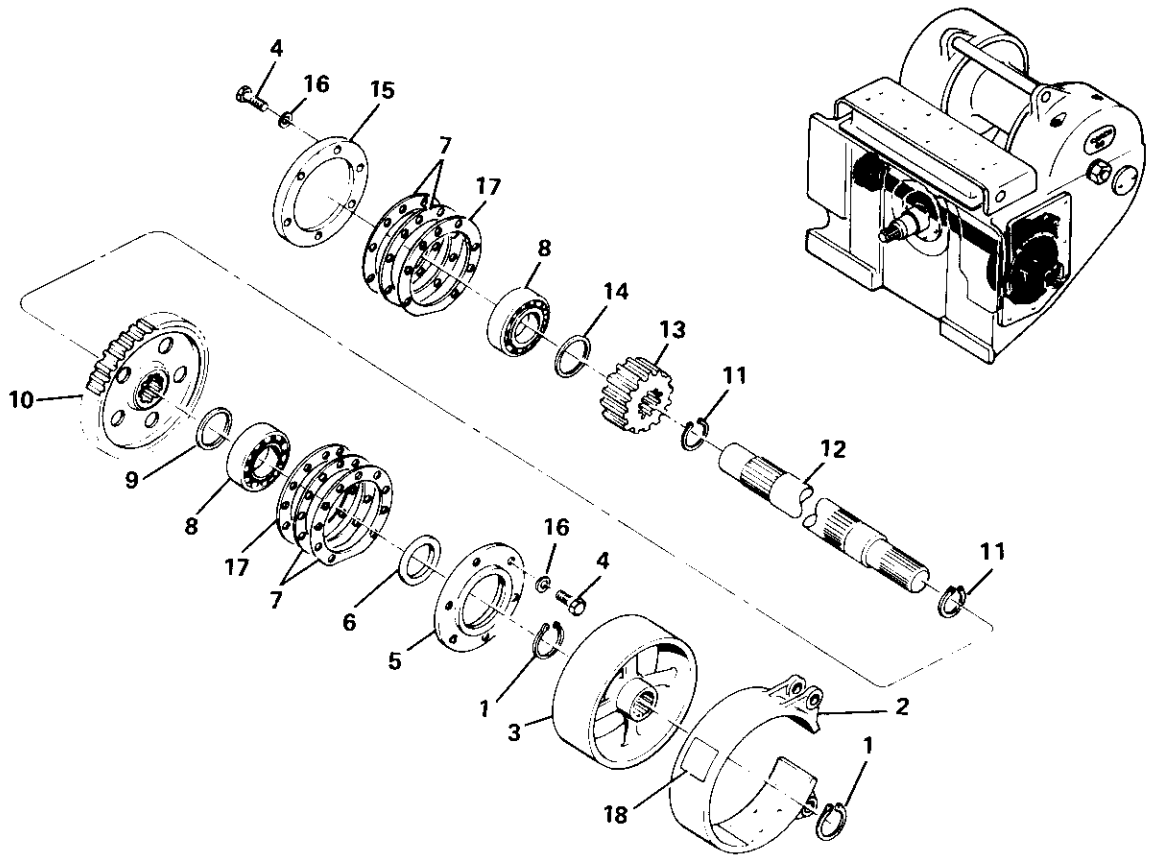
| REF. | CARCO PART NO. | NAME AND DESCRIPTION | QUAN. PER UNIT |
|------|----------------|---|----------------------|
| 1 | 16166-20 | Plug, W/O ring (PARKER 05P0-20) | 2 |
| 2 | 44753 | Spring | 2 |
| 3 | 44949 | Seal (Includes Item 25) | 2 |
| 4 | 16047-810 | Cap Screw (1/2 UNC x 1-1/4) | 12 |
| 5 | 44432 | Retainer | 2 |
| 6 | 44431 | Shim Set | 2 |
| 7 | 41742 | Shaft (S.N. 6-2235 and below) | 2 |
| | 53221 | Shaft (S.N. 6-2236 and up) | 2 |
| 8 | 44478 | Clamp Ring | 2 |
| 9 | 44336 | Shim Set | 2 |
| 10 | { 15179 | Bearing Cup | 2 |
| | { 15180 | Bearing Cone | 2 |
| 11 | 45018 | Thrust Washer | 2 |
| 12 | 15253 | Bearing Set | 2 |
| 13 | 44446 | Retaining Ring | 2 |
| 14 | 44343 | Retaining Ring | 2 |
| 15 | 48864 | Pinion | 2 |
| 16 | 45017 | Thrust Washer | 2 |
| 17 | 51271-1 | Clutch Assembly (Includes Items 13 and 14) (See page 20 for clutch components) | 2 |
| 18 | 44452 | Static Seal | 4 |
| 19 | 15030 | Ball Bearing | 2 |
| 20 | 44451 | Spacer | |
| 21 | { 44433 | Shaft (S.N. 6-2235 and below), Sub 53625 and 2 – 53321 (Item 7) | |
| | { 53625 | Shaft, Bevel Gear (S.N. 6-2236 and up) | 1 |
| 22 | 16064-8 | Washer (1/2) | 12 |
| 23 | 44940 | Washer | 2 |
| 24 | 45028 | Gasket | 2 |
| 25 | 16262-121 | O-Ring (NAT'L. 610067) | 2 |
| 26 | 16262-920 | O-Ring (NAT'L. 600602) | 2 |

CARCO MODEL 60-PS, PSM & PSC
 PARTS LIST SECTION—PAGE 20
 CLUTCH ASSEMBLY



CLUTCH ASSEMBLY

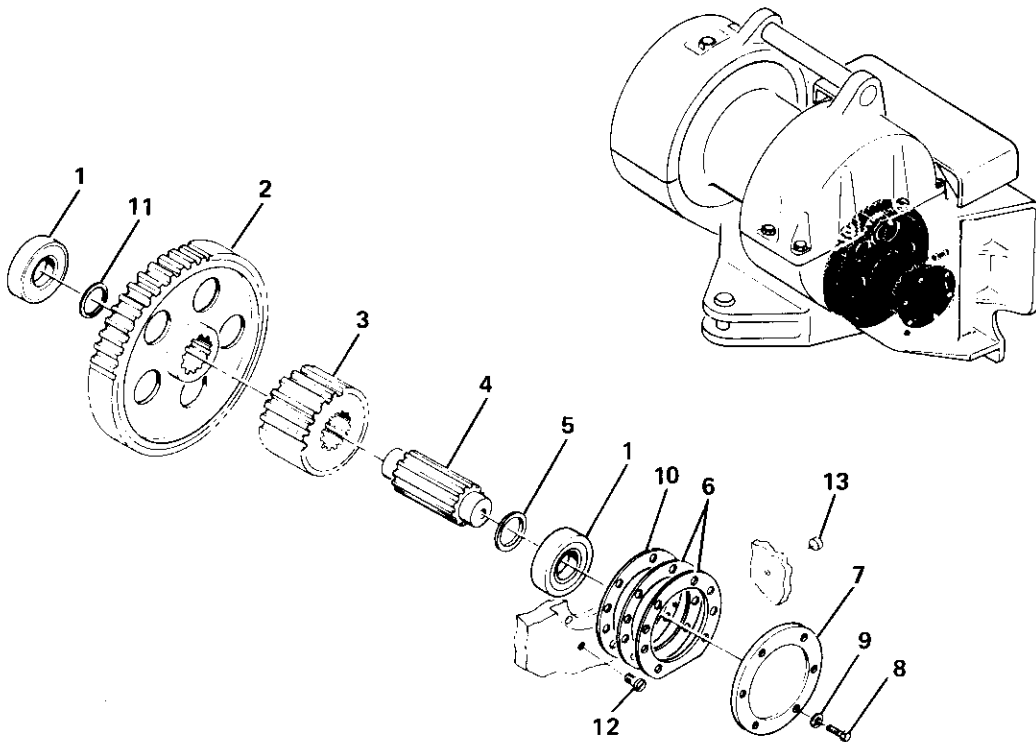
| REF. | CARCO PART NO. | NAME AND DESCRIPTION | QUAN. PER UNIT |
|------|----------------|---|----------------|
| 1 | 16290-808 | Dowel Pin (1/4 x 1/2) | 1 |
| 2 | 51270-1 | Housing (Includes Items 1 and 14) | 1 |
| 3 | 46242 | Seal | 1 |
| 4 | 46243 | Seal | 1 |
| 5 | 44445 | Piston | 1 |
| 6 | 44450 | Ring | 1 |
| 7 | 44449 | Spring | 16 |
| 8 | 44448 | Retainer | 1 |
| 9 | 16313-287 | Retaining Ring (TRUARC 5100-287) | 1 |
| 10 | 46134 | Steel Disc (External Splines) | 5 |
| 11 | 46133 | Friction Disc (Internal Splines) | 4 |
| 12 | 44343 | Retaining Ring | 1 |
| 13 | 44446 | Retaining Ring | 1 |
| 14 | 52593 | Seat Assembly | 1 |
| 15 | 16295-1424 | Pin (SPIROL 437-1500-H-B-K) | 1 |
| — | 51271-1 | Clutch Assembly (Consists of all above items) | 1 |



BRAKE SHAFT GROUP NO. 52052

| REF. | CARCO PART NO. | NAME AND DESCRIPTION | QUAN. PER UNIT |
|------|----------------|--|----------------|
| 1 | 16313-200 | Retaining Ring (TRUARC 5100-200) | 2 |
| 2 | 46602 | Brake Band Assembly (includes following) | 1 |
| | 46603 | Brake Block | 3 |
| | 16323-808 | Rivet (1/4 x 1/2 Tub. Brass) | 30 |
| 3 | 44420 | Brake Drum | 1 |
| 4 | 16047-810 | Cap Screw (1/2 UNC x 1-1/4 H.H.) | 12 |
| 5 | 44435 | Carrier | 1 |
| 6 | 16342-1 | Oil Seal (NAT'L. 415659) | 1 |
| 7 | 44431 | Shim Set | 2 |
| 8 | 15074 | Ball Bearing | 2 |
| 9 | 44463-2 | Spacer | 1 |
| 10 | 44436 | Gear | 1 |
| 11 | 16313-231 | Retaining Ring (TRUARC 5100-231) | 2 |
| 12 | 44434 | Brake Shaft | 1 |
| 13 | 45012 | Pinion | 1 |
| 14 | 44463-1 | Spacer | 1 |
| 15 | 44464 | Cover | 1 |
| 16 | 16064-8 | Washer (1/2) | 12 |
| 17 | 45028 | Gasket | 2 |
| 18 | 51955 | Asbestos Warning Plate | 1 |

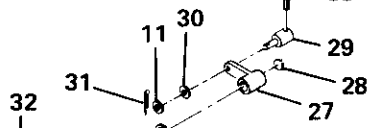
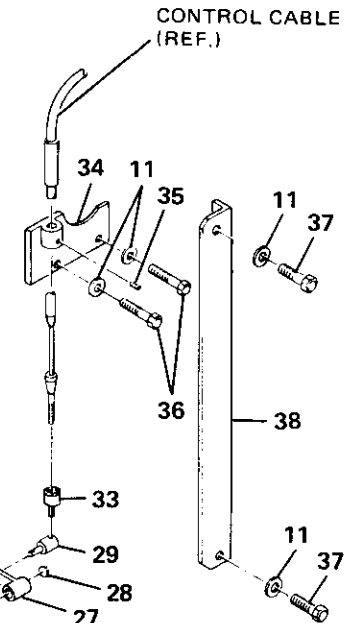
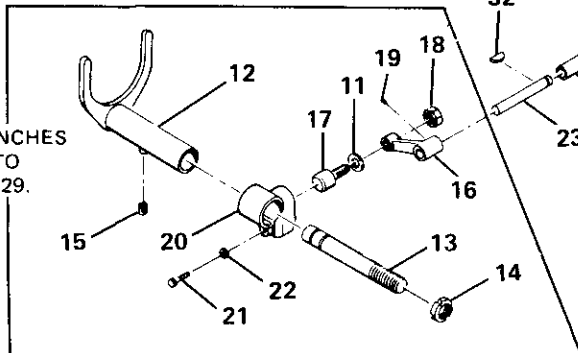
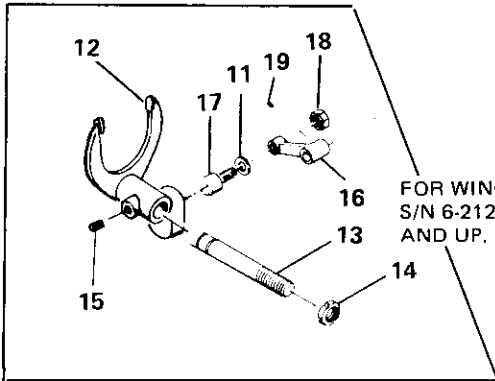
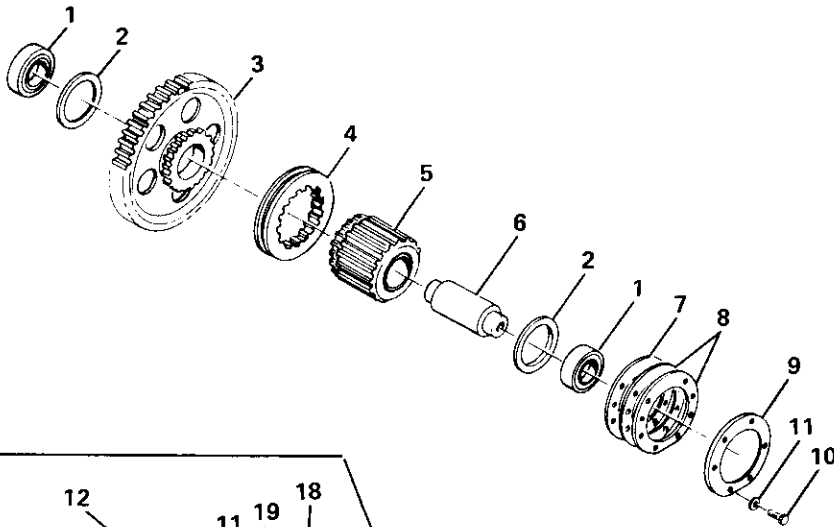
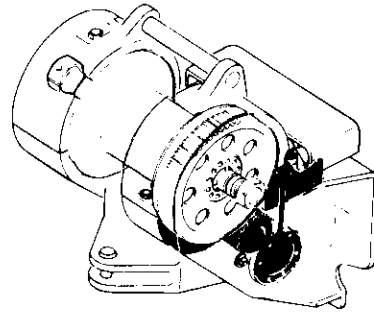
CARCO MODEL 60-PS, PSM & PSC WINCH
 PARTS LIST SECTION—PAGE 22
 IDLER SHAFT GROUP



IDLER SHAFT GROUP (NO FREE SPOOL) 52061-1

| REF. | CARCO PART NO. | NAME AND DESCRIPTION | QUAN. PER UNIT |
|------|----------------|----------------------------------|----------------|
| 1 | 15296 | Bearing, Roller | 2 |
| 2 | 44468 | Gear | 1 |
| 3 | 44465 | Pinion | 1 |
| 4 | 48904 | Shaft | 1 |
| 5 | 44467 | Spacer | 1 |
| 6 | 44431 | Shim Set | 1 |
| 7 | 44464 | Cover | 1 |
| 8 | 16047-810 | Cap Screw (1/2 UNC x 1-1/4 H.H.) | 6 |
| 9 | 16064-8 | Washer (1/2) | 6 |
| 10 | 45028 | Gasket | 1 |
| 11 | 48906-1 | Spacer | 1 |
| 12 | 50475 | Plug | 1 |
| 13 | 16540-0001 | Plug, Cup Expansion (1-1/8) | 1 |

CARCO MODEL 60-PS, PSM & PSC WINCH
 PARTS LIST SECTION—PAGE 24
 FREE SPOOL IDLER SHAFT

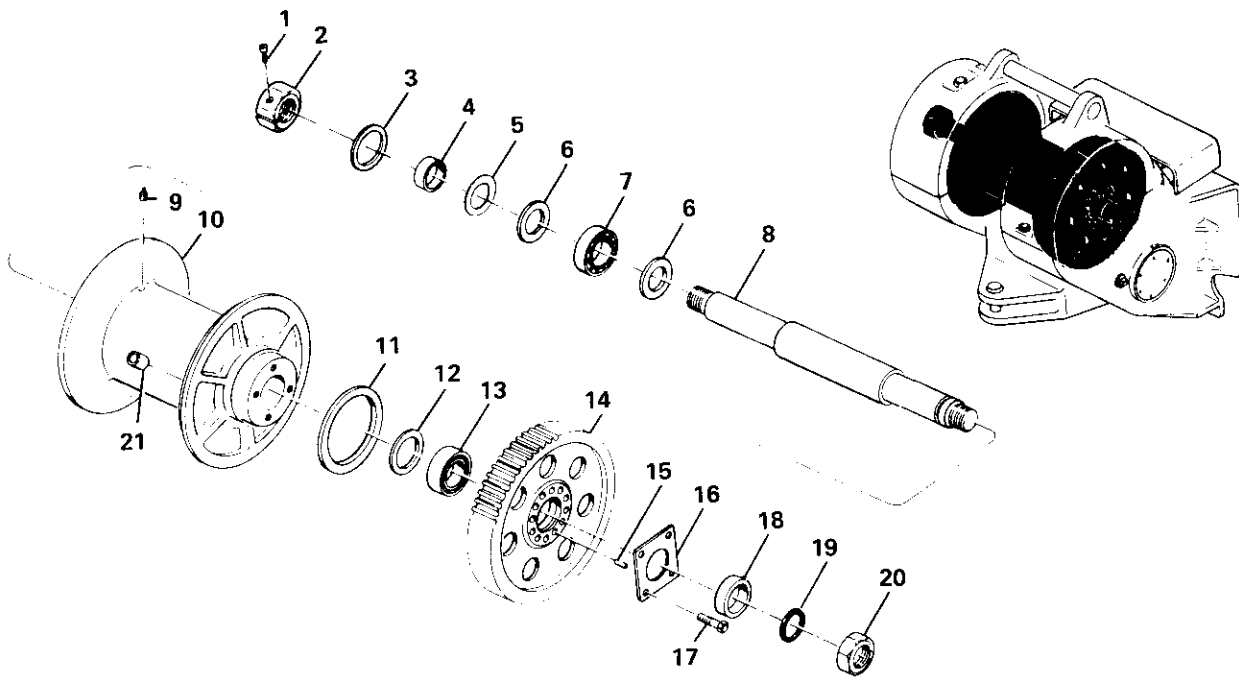


FREE SPOOL IDLER SHAFT GROUP 52062

CARCO MODEL 60-PS, PSM & PSC WINCH
PARTS LIST SECTION—PAGE 25
FREE SPOOL IDLER SHAFT

| REF. | CARCO PART NO. | NAME AND DESCRIPTION | QUAN. PER UNIT |
|------|----------------|---|----------------------|
| 1 | 15296 | Bearing | 2 |
| 2 | 49953 | Washer, Thrust | 2 |
| 3 | 49954 | Gear, Idler | 1 |
| 4 | 49943 | Coupling | 1 |
| 5 | 53533-60 | Pinion Assy, w/Bushing | 1 |
| 6 | 49955 | Shaft, Idler | 1 |
| 7 | 45028 | Gasket | 1 |
| 8 | 44431 | Shim Set | 1 |
| 9 | 44464 | Cover | 1 |
| 10 | 16047-810 | Cap Screw (1/2 UNC x 1-1/4) | 6 |
| 11 | 16064-8 | Washer (1/2) | 10 |
| 12 | { 49944-50 | Fork Assy, Shift (S.N. 6-2128 and below), Sub 53586 | 1 |
| | { 53586 | Fork Assy, Shift (S.N. 6-2129 and up) | 1 |
| 13 | 49940-50 | Guide | 1 |
| 14 | 16041-6 | Nut, Lock (TIMKEN TN-06) | 1 |
| 15 | 16403-2 | Ball Plunger | 1 |
| 16 | { 49949 | Lever, Shift (S.N. 6-2128 and below) | 1 |
| | { 53458 | Lever, Shift (S.N. 6-2129 and up) | 1 |
| 17 | 16404-14 | Cam Follower | 1 |
| 18 | 16044-6 | Nut (3/8 UNF Hex Jam) | 1 |
| 19 | 16056-612 | Set Screw (3/8 UNC x 3/4) | 1 |
| 20 | 49947 | Cam, Shift (S.N. 6-2128 and below) | 1 |
| 21 | 16047-608 | Cap Screw (3/8 UNC x 1) (S.N. 6-2128 and below) | 1 |
| 22 | 16067-6 | Washer, Lock (S.N. 6-2128 and below) | 1 |
| 23 | 52439 | Shaft, Shifter | 1 |
| 24 | 16006-21 | Bushing | 2 |
| 25 | 16342-19 | Oil Seal (NAT'L. 410791) | 2 |
| 26 | 16064-10 | Washer (5/8) | 1 |
| 27 | 49941-50 | Lever, Control | 1 |
| 28 | 16313-62 | Retaining Ring (TRUARC 5100-62) | 1 |
| 29 | 49332 | Pin, Cable | 1 |
| 30 | 49333-1 | Spring, Disc | 1 |
| 31 | 16292-616 | Pin, Spring (3/16 x 1) | 1 |
| 32 | 16226-1 | Key (WOODRUFF 5/32 x 5/8) | 1 |
| 33 | 52399 | Adapter, Cable | 1 |
| 34 | 49952-11 | Bracket | 1 |
| 35 | 16056-606 | Set Screw (3/8 UNC x 3/8) | 2 |
| 36 | 16047-812 | Cap Screw (1/2 UNC x 1-1/2) | 2 |
| 37 | 16047-806 | Cap Screw (1/2 UNC x 3/4) | 1 |
| 38 | 49956 | Guard, Cable | |

CARCO MODEL 60-PS, PSM & PSC WINCH
 PARTS LIST SECTION—PAGE 26
 CABLE DRUM GROUP W/FREE SPOOL



FREE SPOOL CABLE DRUM GROUP

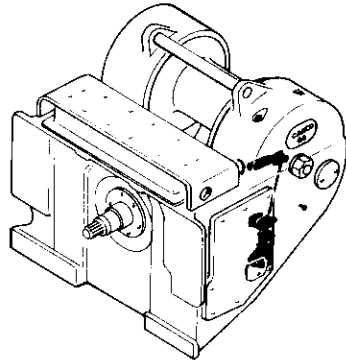
| REF. | CARCO PART NO. | NAME AND DESCRIPTION | QUAN. PER UNIT |
|------|----------------|---|----------------|
| 1 | 16045-712 | Screw, Self-Lock (7/16 UNF x 1-1/2 Hex. Soc. Hd.) | 1 |
| 2 | 49957-40 | Nut, Split | 1 |
| 3 | 16343-21 | Oil Seal (NAT'L. 455379) | 1 |
| 4 | 44457-2 | Spacer | 1 |
| 5 | 44881 | Shim | 2 |
| 6 | 44458 | Washer | 2 |
| 7 | 15299 | Bearing Set | 1 |
| 8 | 44459 | ** Shaft, Cable Drum | 1 |
| 9 | 16222-2 | Grease Fitting (ALEMITE 1610 BL) | 1 |
| 10 | 44456 | Cable Drum, Standard | 1 |
| | 44682 | Cable Drum, High Capacity | 1 |
| 11 | 16342-10 | Oil Seal (NAT'L. 415300) | 1 |
| 12 | 16343-16 | Oil Seal (NAT'L. 455137) | 1 |
| 13 | 15200 | Bearing Set | 1 |
| 14 | 44461 | Gear, Cable Drum | 1 |
| 15 | 45081-2 | * Dowel Pin | 4 |
| 16 | 44469 | Lock Plate | 1 |
| 17 | 16048-1218 | Cap Screw (3/4 UNF x 2-1/4) | 4 |
| 18 | 44460-2 | Spacer | 1 |
| 19 | 16262-332 | O-Ring (NAT'L. 622735) | 1 |
| 20 | 16044-40 | Nut (2-1/2 UNF Hex Jam) | 1 |
| 21 | { 25457-3 | Ferrule (1) | 1 |
| | { 25457-2 | Ferrule (7/8) | 1 |
| | { 25457-1 | Ferrule (3/4) | 1 |

NOTES:

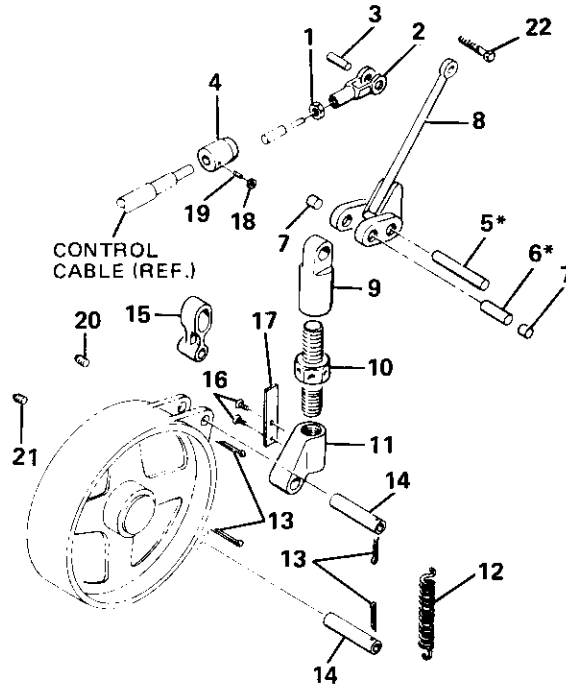
*When bull gear or cable drum is replaced, dowel holes must be drilled 5/64" and reamed .9057"/.9077" to accommodate oversize 45081-2 dowels.

**For extended drum shaft order 46925 shaft and 2 each 10641-14 nut, Timken TN 14.

CARCO MODEL 60-PS, PSM & PSC WINCH
 PARTS LIST SECTION—PAGE 27
 BRAKE CONTROL (MANUAL)



NOTE:
 *DIAGRAM SHOWS PINS (ITEMS 5 AND 6)
 IN LOCATIONS FOR OVERWIND CABLE
 DRUM OPERATIONS.
 REVERSE LOCATION OF PINS (ITEMS
 5 AND 6) WHEN CONVERTING WINCH
 TO UNDERWOUND.

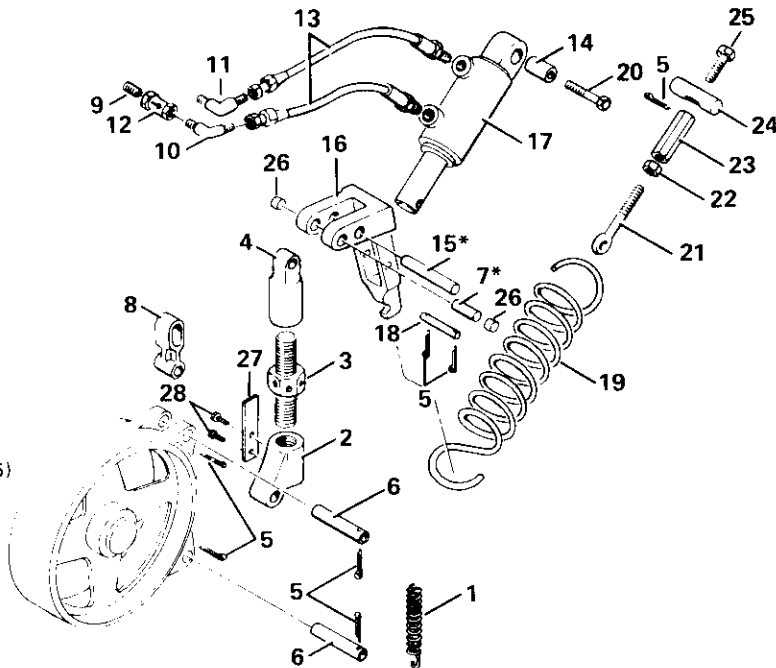
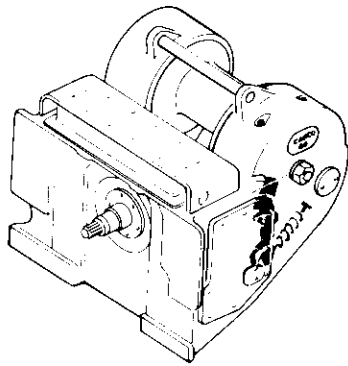


MANUAL BRAKE CONTROL GROUP NO. 52073

| REF. | CARCO PART NO. | NAME AND DESCRIPTION | QUAN. PER UNIT |
|------|----------------|------------------------------------|----------------------|
| 1 | 16044-6 | Nut (3/8 UNF Hex Jam) | 1 |
| 2 | 16245-6 | Yoke (CLEVELAND 2708-4A) | 1 |
| 3 | 16246-6 | Pin (CLEVELAND 2708-1/2-4A) | 1 |
| 4 | 45351-1 | Anchor | 1 |
| 5 | 44428 | Pin | 1 |
| 6 | 44429 | Pin | 1 |
| 7 | 44687-2 | Spacer | 2 |
| 8 | 44984 | Arm | 1 |
| 9 | 44426-1 | Rod Nut | 1 |
| 10 | 44423 | Rod | 1 |
| 11 | 44422-1 | Rod Nut | 1 |
| 12 | 44107 | Spring | 1 |
| 13 | 16288-420 | Cotter Pin (1/8 x 1-1/4) | 4 |
| 14 | 44421 | Pin | 2 |
| 15 | 44427 | Link | 1 |
| 16 | 16055-5 | Drive Screw (#10 x 3/8 Type U) | 2 |
| 17 | 44806 | Spring | 1 |
| 18 | 16043-6 | Nut (3/8 UNC Hex Jam) | 1 |
| 19 | 16056-612 | Set Screw (3/8 UNC x 3/4 Hex Soc.) | 1 |
| 20 | 16169-6 | Plug (3/8 NPT Sq. Hd.) | 1 |
| 21 | 16169-4 | Plug (1/4 NPT Sq. Hd.) | 1 |
| 22 | 16047-1232 | Cap Screw (3/4 UNC x 4 H.H.) | 1 |

NOTE: See pages 6 & 7 for control stand group.

CARCO MODEL 60-PS, PSM & PSC WINCH
 PARTS LIST SECTION—PAGE 28
 BRAKE CONTROL (SPRING APPLIED)



NOTE:

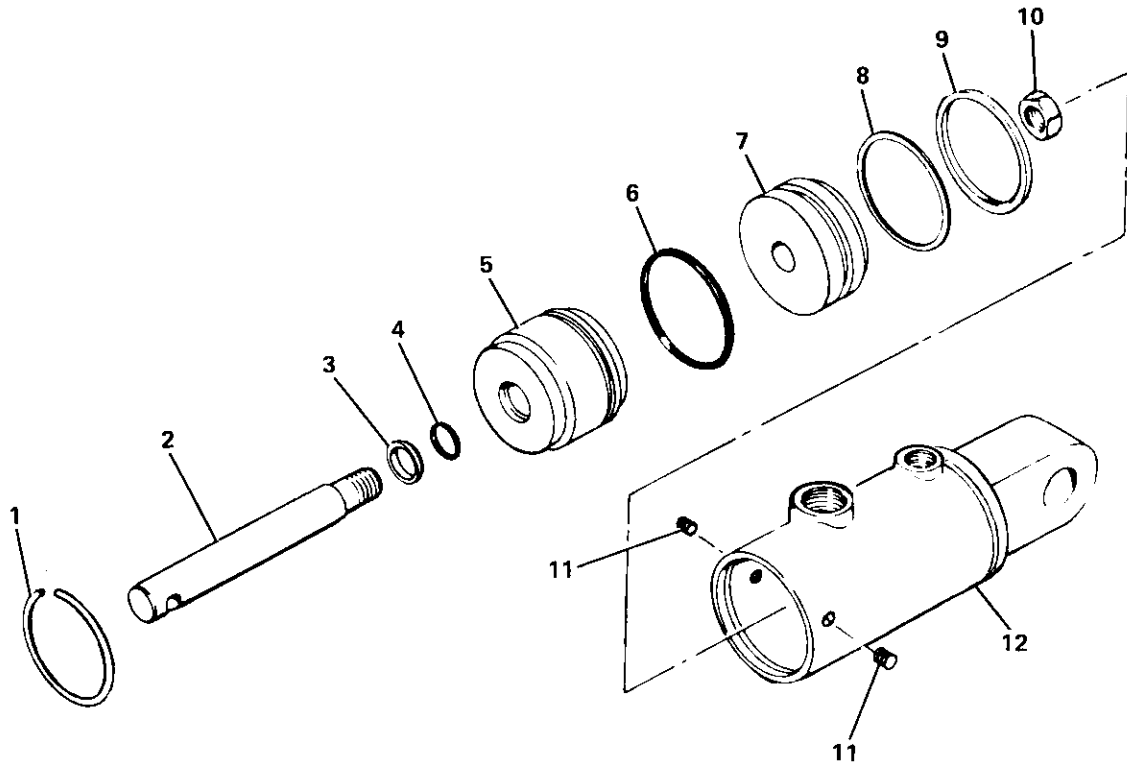
*DIAGRAM SHOWS PINS (ITEMS 7 AND 15) IN LOCATIONS FOR OVERWIND CABLE DRUM OPERATIONS.

REVERSE LOCATION OF PINS (ITEMS 7 AND 15) WHEN CHANGING WINCH TO UNDERWOUND.

P.S. BRAKE CONTROL GROUP (SPRING APPLIED) NO. 52072

| REF. | CARCO PART NO. | NAME AND DESCRIPTION | QUAN. PER UNIT |
|------|----------------|------------------------------|----------------|
| 1 | 44107 | Spring | 1 |
| 2 | 44422-1 | Rod Nut | 1 |
| 3 | 44423 | Rod | 1 |
| 4 | 44426-1 | Rod Nut | 1 |
| 5 | 16288-420 | Cotter Pin (1/8 x 1-1/4) | 7 |
| 6 | 44421 | Pin | 2 |
| 7 | 44429 | Pin | 1 |
| 8 | 44427 | Link | 1 |
| 9 | 16158-407 | Nipple (1/4 NPT x 1) | 1 |
| 10 | 16145-46 | Elbow (WTHRD. C5405 x 6) | 1 |
| 11 | 16145-66 | Elbow (WTHRD. C5405 x 6 x 6) | 1 |
| 12 | 51278 | Flow Control Valve | 1 |
| 13 | 44118-13 | Hose | 2 |
| 14 | 46077-1 | Sleeve | 1 |
| 15 | 44428 | Pin | 1 |
| 16 | 44437 | Arm | 1 |
| 17 | 51279 | Cylinder (See Page 29) | 1 |
| 18 | 44438 | Pin | 1 |
| 19 | 40155 | Spring | 1 |
| 20 | 16047-1232 | Cap Screw (3/4 UNC x 4) | 1 |
| 21 | 44206 | Eye Bolt | 1 |
| 22 | 16043-8 | Nut (1/2 UNC Hex Jam) | 1 |
| 23 | 40174 | Nut | 1 |
| 24 | 40175 | Pin | 1 |
| 25 | 42023 | Screw | 1 |
| 26 | 44687-2 | Spacer | 2 |
| 27 | 44806 | Spring | 1 |
| 28 | 16055-5 | Drive Screw (#10 x 3/8) | 2 |

NOTE: See pages 4 & 5 for control stand group.

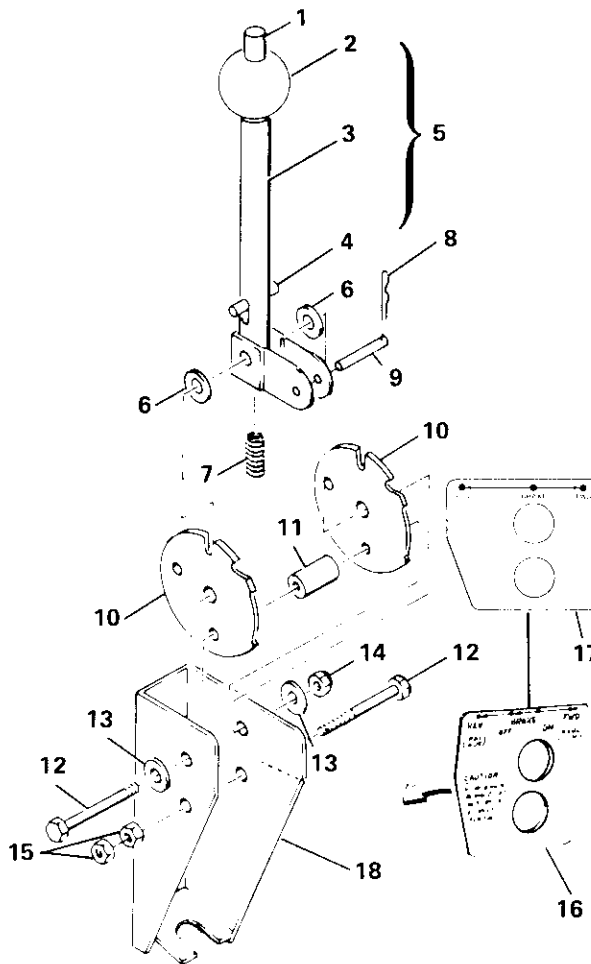


BRAKE CYLINDER ASSEMBLY

| REF. | CARCO PART NO. | NAME AND DESCRIPTION | QUAN. PER UNIT |
|------|----------------|--|----------------|
| 1 | 16280-6 | Retaining Ring | 1 |
| 2 | 16280-4 | Rod, Piston | 1 |
| 3 | 16280-7 | Wiper | 1 |
| 4 | 16262-214 | O-Ring (NAT'L. 622719) | 1 |
| 5 | 16280-2 | Head | 1 |
| 6 | 16262-228 | O-Ring (NAT'L. 623006) | 1 |
| 7 | 16280-15 | Piston | 1 |
| 8 | 16301-1 | Washer, Back-up | 1 |
| 9 | 16334-1 | Seal (C/R 710087) | 1 |
| 10 | 16280-5 | Nut | 1 |
| 11 | 16054-404 | Set Screw (1/4 UNC x 1/4) | 2 |
| 12 | NSS | Tube Assy (Order 51279 Brake Cylinder) | 1 |
| --- | 46241 | Repair Kit, Seal (Consists of Items 3, 4, 6, 8, 9) | 1 |
| --- | 51279 | Brake Cylinder Assembly | 1 |

CARCO MODEL 60-PS, PSM & PSC WINCH
 PARTS LIST SECTION—PAGE 30
 POWERSHIFT CONTROL STAND

CONTROL STAND (POWERSHIFT)
 49001-01 THROUGH 49001-08*
 CONTROL STAND
 (POWER SHIFT W/MANUAL BRAKE)
 53598-01 THROUGH 53598-08*



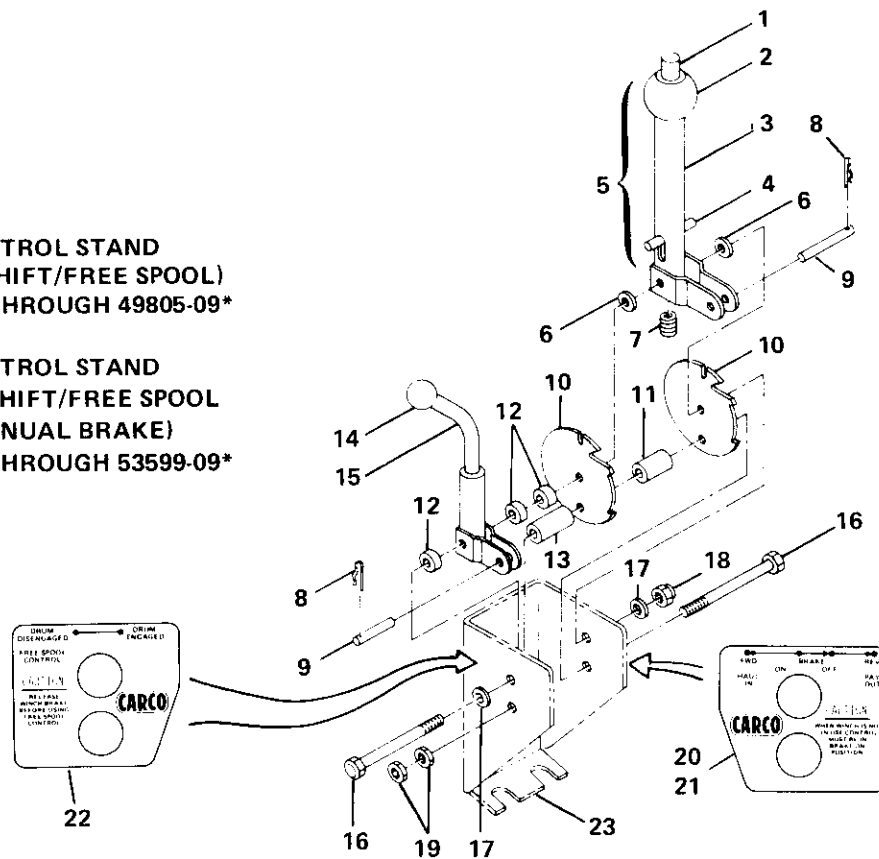
| REF. | CARCO PART NO. | NAME AND DESCRIPTION | QUAN. PER UNIT |
|------|----------------|--|----------------------|
| 1 | 49004 | Push Rod | 1 |
| 2 | 41404 | Ball | 1 |
| 3 | 49005 | Handle | 1 |
| 4 | 16294-824 | Pin, Spring (1/4 x 1-1/2) | 1 |
| 5 | 49003 | Lever Assy (Consists of Items 1, 2, 3, 4) | 1 |
| 6 | 16009-6 | Bearing, Thrust (BUNTING TW-37) | 2 |
| 7 | 41403 | Spring | 1 |
| 8 | 16381-13 | Pin, Hitch | 1 |
| 9 | 49010 | Pin | 1 |
| 10 | 49007 | Plate, Lock | 2 |
| 11 | 49804-3 | Spacer | 1 |
| 12 | 16047-620 | Cap Screw (3/8 UNC x 2-1/2) | 2 |
| 13 | 16064-6 | Washer (3/8) | 2 |
| 14 | 16039-66 | Nut, Lock (3/8) | 1 |
| 15 | 16033-6 | Nut (3/8 Hex) | 2 |
| 16 | 49314 | Plate, Instruction, Powershift | 1 |
| 17 | 53362-2 | Plate, Instruction, Powershift w/Manual Brake | 1 |
| 18 | NSS | * Housing, Powershift (Order Control Stand Assembly) | 1 |

*Refer to Control Group, pages 4 and 6 for part number of complete Control Stand Assembly.

CARCO MODEL 60-PS, PSM & PSC WINCH
PARTS LIST SECTION—PAGE 31
POWERSHIFT W/FREE SPOOL CONTROL STAND

CONTROL STAND
(POWERSHIFT/FREE SPOOL)
49805-01 THROUGH 49805-09*

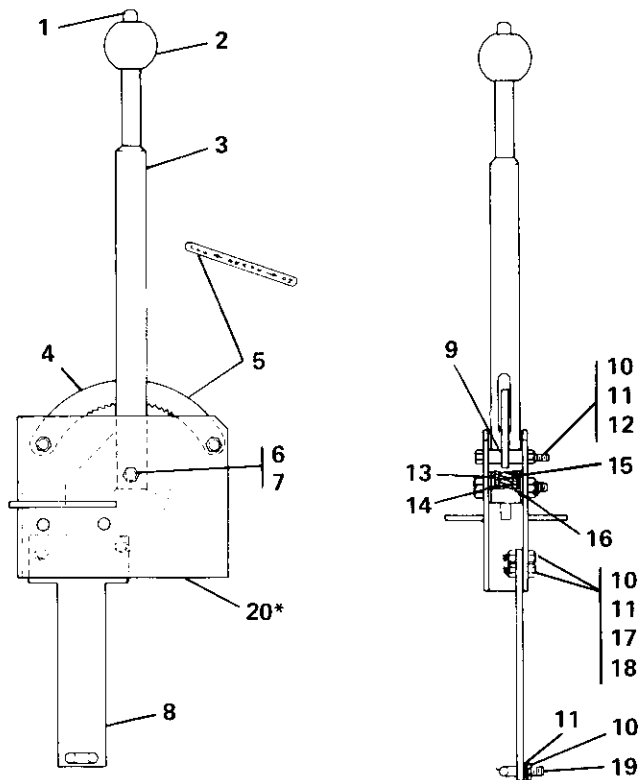
CONTROL STAND
(POWERSHIFT/FREE SPOOL
W/MANUAL BRAKE)
53599-01 THROUGH 53599-09*



| REF. | CARCO PART NO. | NAME AND DESCRIPTION | QUAN. PER UNIT |
|------|----------------|---|----------------|
| 1 | 49004 | Push Rod | 1 |
| 2 | 41404 | Ball | 1 |
| 3 | 49005 | Handle | 1 |
| 4 | 16294-824 | Pin, Spring (1/4 x 1-1/2) | 1 |
| 5 | 49003 | Lever Assy (Consists of Items 1, 2, 3, 4) | 1 |
| 6 | 16009-6 | Bearing, Thrust (BUNTING TW-37) | 2 |
| 7 | 41403 | Spring | 1 |
| 8 | 16381-13 | Pin, Hitch | 2 |
| 9 | 49010 | Pin | 2 |
| 10 | 49007 | Plate, Lock | 2 |
| 11 | 49804-3 | Spacer | 1 |
| 12 | 49804-2 | Spacer | 3 |
| 13 | 49804-1 | Spacer | 1 |
| 14 | 16236-4 | Knob | 1 |
| 15 | 49802-1 | Lever Assy, Free Spool | 1 |
| 16 | 16047-632 | Cap Screw (3/8 UNC x 4) | 2 |
| 17 | 16064-6 | Washer (3/8) | 2 |
| 18 | 16039-66 | Lock Nut (3/8) | 1 |
| 19 | 16033-6 | Nut (3/8 Hex) | 2 |
| 20 | 49314 | Plate, Instruction, Powershift | 1 |
| 21 | 53362-2 | Plate, Instruction, Powershift w/Manual Brake | 1 |
| 22 | 49807-2 | Plate, Instruction, Free Spool | 1 |
| 23 | NSS | * Housing, Powershift w/Free Spool (Order Control Stand Assembly) | |

*Refer to Control Group, pages 5 and 7 for part number of complete Control Stand Assembly.

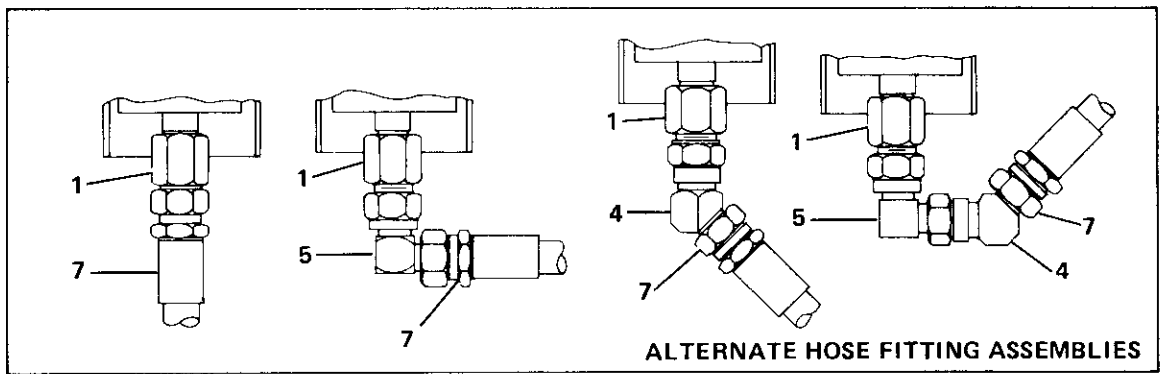
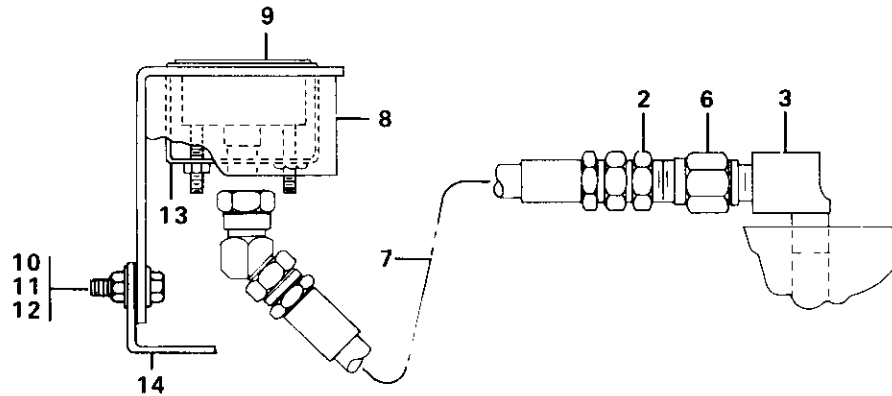
CARCO MODEL 60-PS, PSM & PSC WINCH
 PARTS LIST SECTION—PAGE 32
 MANUAL BRAKE CONTROL STAND



MANUAL BRAKE CONTROL STAND ASSEMBLY NO. 49434*

| REF. | CARCO PART NO. | NAME AND DESCRIPTION | QUAN. PER UNIT |
|------|----------------|---|----------------|
| 1 | 50629 | Rod | 1 |
| 2 | 41404 | Ball | 1 |
| 3 | 49435 | Handle | 1 |
| 4 | 50627 | Sector | 1 |
| 5 | 49446 | Plate, Instruction | 1 |
| 6 | 16039-83 | Nut, Lock | 1 |
| 7 | 16047-818 | Cap Screw (1/2 UNC x 2-1/4) | 1 |
| 8 | 50099 | Arm | 1 |
| 9 | 49438 | Spacer | 4 |
| 10 | 16033-6 | Nut (3/8) | 6 |
| 11 | 16067-6 | Washer, Lock (3/8) | 6 |
| 12 | 16047-620 | Cap Screw (3/8 UNC x 2-1/2) | 2 |
| 13 | 49437 | Bushing | 1 |
| 14 | 49436 | Washer | 2 |
| 15 | 49445 | Spring | 1 |
| 16 | 16064-3 | Washer, Plain | 1 |
| 17 | 16047-608 | Cap Screw (3/8 UNC x 1) | 2 |
| 18 | 16064-6 | Washer, Plain | 2 |
| 19 | 16398-4 | U-Bolt (3/8) | 1 |
| 20 | NSS | * Housing (Order complete Control Stand Assembly) | |

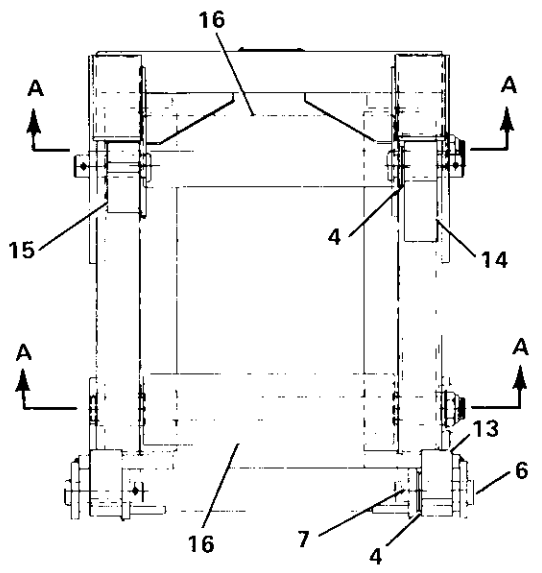
*Refer to Control Group, pages 6 and 7 for part number of complete Control Stand Assembly.



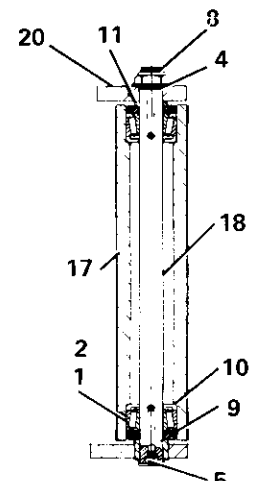
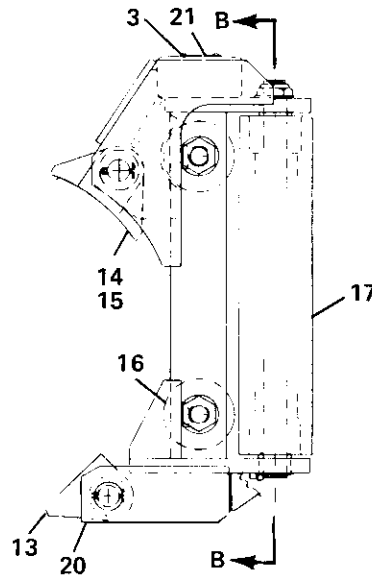
| REF. | CARCO PART NO. | NAME AND DESCRIPTION | KIT NUMBER | | |
|------|----------------|------------------------------------|----------------|----------------|----------------|
| | | | 48944-120 | 48700-120 | 51480-1 |
| | | | QUAN. PER UNIT | QUAN. PER UNIT | QUAN. PER UNIT |
| 1 | 16116-44 | Adapter (WTHRD. C5255 x 4 x 4) | 1 | 1 | 1 |
| 2 | 16129-44 | * Connector (WTHRD. C5205 x 4 x 4) | 1 | 1 | 1 |
| 3 | 16171-44 | * Elbow (WTHRD. 3400 x 4) | 1 | 1 | 1 |
| 4 | 16184-44 | Union (WTHRD. C5356 x 4) | 1 | 1 | — |
| 5 | 16185-44 | Union (WTHRD. C5506 x 4) | 1 | 1 | — |
| 6 | 16362-44 | * Snubber (CHEMIQUIP 25B-D) | 1 | 1 | 1 |
| 7 | 44921-120 | Hose Assembly | 1 | 1 | 1 |
| 8 | 48687 | Bracket | 1 | 1 | — |
| 9 | 48693-1 | Gauge | 1 | 1 | 1 |
| 10 | 16047-608 | Screw, Hex Hd Cap (3/8 x 1 UNC) | 1 | — | — |
| 11 | 16033-6 | Nut, Hex (3/8 UNC) | 1 | — | — |
| 12 | 16063-6 | Washer (3/8) | 1 | — | — |
| 13 | 16385 | Bracket | 1 | 1 | 1 |
| 14 | 49343-2 | Bracket | 1 | — | — |

*Items 2, 3, and 6 are also shown in hydraulic control section.

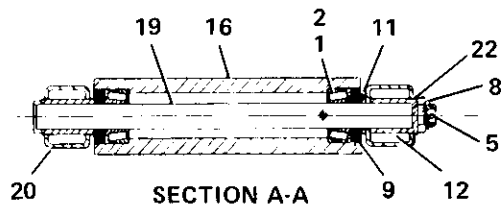
CARCO MODEL 60-PS, PSM & PSC WINCH
 PARTS LIST SECTION—PAGE 34
 FAIRLEAD



FAIRLEAD ASSEMBLY



SECTION B-B
 (VERTICAL ROLLER)



SECTION A-A
 (HORIZONTAL ROLLER)

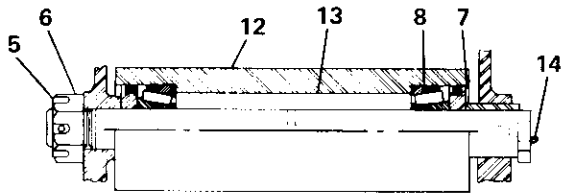
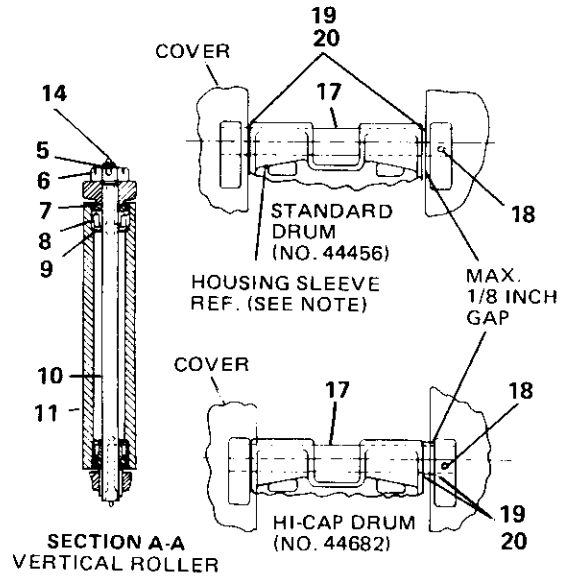
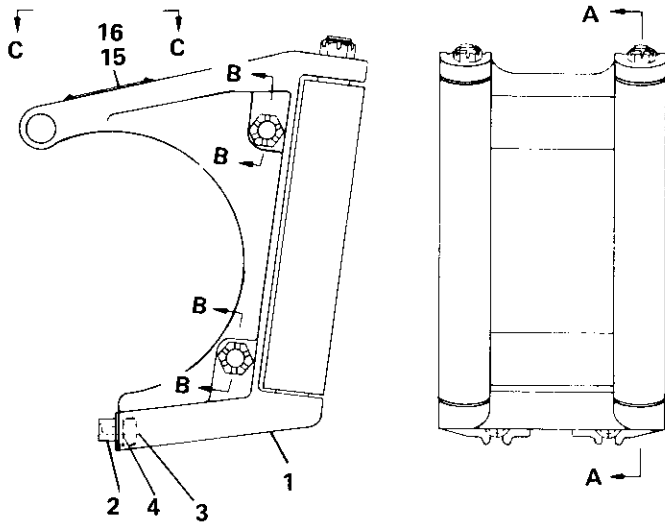
NOTE: THIS FAIRLEAD IS NORMALLY FURNISHED AS A 3-ROLLER UNIT, WITH HORIZONTAL ROLLER IN TOP POSITION — IF A 4-ROLLER UNIT IS REQUIRED, AN ADDITIONAL ROLLER CAN BE SUPPLIED CONSISTING OF ITEMS LISTED IN COLUMN "A" IN PARTS LIST.

FAIRLEAD — PART NO. 53289-030 (3 ROLLER)
 53289-040 (4 ROLLER)

| REF. | CARCO PART NO. | NAME AND DESCRIPTION | QUAN. PER UNIT | "A" |
|------|----------------|-----------------------------------|----------------|-----|
| 1 | 15178 | Cone | 6 | 2 |
| 2 | 15235 | Cup | 6 | 2 |
| 3 | 16055-5 | Screw, Tapping (#10 x 3/8 Type U) | 4 | |
| 4 | 16064-24 | Washer, Plain (1-1/2) | 6 | |
| 5 | 16222-2 | Fitting, Grease (ALEMITE 1606B) | 5 | 1 |
| 6 | 16287-6 | Pin, Clevis (1-1/2 x 5) | 4 | |
| 7 | 16288-832 | Pin, Cotter (1/4 x 2) | 4 | |
| 8 | 16533-24 | Nut, Lock (ESNA 52NTE-242) | 3 | 1 |
| 9 | 30044 | Guard Assembly, Dust | 6 | 2 |
| 10 | 30045 | Retainer, Grease | 4 | |
| 11 | 53281-0001 | Spacer | 3 | 1 |
| 12 | 53281-0002 | Spacer | 1 | 1 |
| 13 | 53282-1 | Lug, Lower | 2 | |
| 14 | 53282-2 | Lug, Brake Side, LH | 1 | |
| 15 | 53282-3 | Lug, Gear Side, RH | 1 | |
| 16 | 53283-0001 | Roller | 1 | 1 |
| 17 | 53283-0002 | Roller | 2 | |
| 18 | 53284-1 | Shaft, Vert. | 2 | |
| 19 | 53285-1 | Shaft, Horiz. | 1 | 1 |
| 20 | 53288 | Frame | 1 | |
| 21 | 53449 | Plate, Name | 1 | |
| 22 | 53255-01 | Washer, Special | 1 | 1 |

CARCO MODEL 60-PS, PSM & PSC WINCH
PARTS LIST SECTION—PAGE 35
FAIRLEAD

THIS FAIRLEAD IS NORMALLY FURNISHED AS A 3-ROLLER UNIT, WITH HORIZONTAL ROLLER IN TOP POSITION — IF A 4-ROLLER UNIT IS REQUIRED, AN ADDITIONAL ROLLER CAN BE SUPPLIED CONSISTING OF ITEMS LISTED IN COLUMN "A" IN PARTS LIST.



SECTION B-B
HORIZONTAL ROLLER

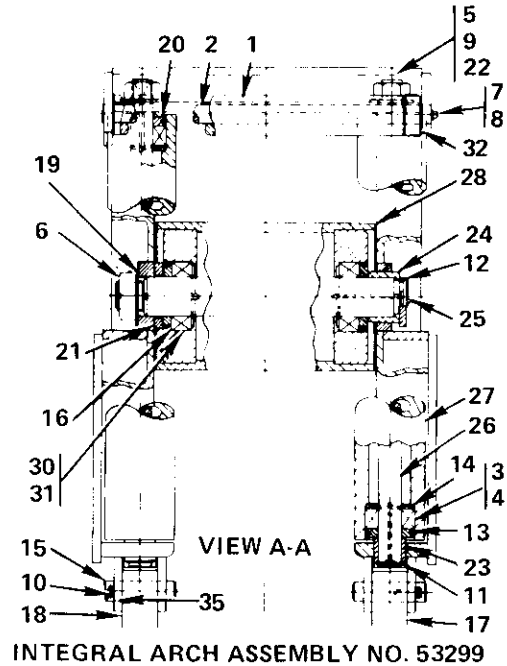
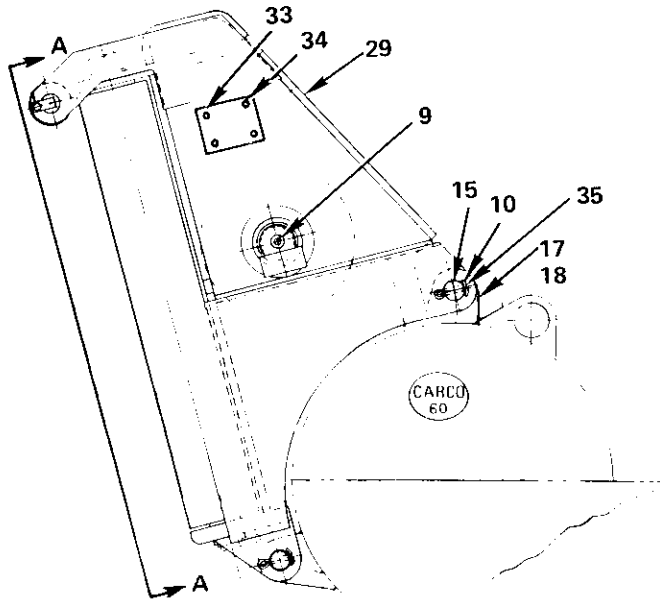
NOTE: AT INSTALLATION, POSITION HOUSING (ITEM 1) SO IT IS CENTERED AS NEARLY AS POSSIBLE ON CABLE DRUM. BURN END OF HOUSING SLEEVE IF NECESSARY, INSTALL ITEMS 19 AND 20 AS REQUIRED TO MAKE MAXIMUM GAP OF 1/8" BETWEEN SPACERS AND WINCH COVER.

FAIRLEAD -- PART NO. 44280-30 (3 ROLLER) -- 44280-40 (4 ROLLER)

| REF. | CARCO PART NO. | NAME AND DESCRIPTION | QUAN. PER UNIT | "A" |
|------|----------------|------------------------------------|----------------|-----|
| 1 | 44368 | Housing | 1 | |
| 2 | 42184 | * Attaching Lug | 2 | |
| 3 | 16047-2018 | Cap Screw (1-1/4 UNC x 2-1/4 H.H.) | 2 | |
| 4 | 16063-20 | Washer | 2 | |
| 5 | 16288-1240 | Cotter Pin (3/8 x 2-1/2) | 3 | 1 |
| 6 | 16036-24 | Nut (TIMKEN K8111) | 3 | 1 |
| 7 | 30044 | Dust Guard | 6 | 2 |
| 8 | { 15235 | Bearing Cup | 6 | 2 |
| | { 15178 | Bearing Cone | 6 | 2 |
| 9 | 30045 | Retainer | 4 | |
| 10 | 30252 | Shaft | 2 | |
| 11 | 30250 | Roller | 2 | |
| 12 | 33958 | Roller | 1 | 1 |
| 13 | 44371 | Shaft | 1 | 1 |
| 14 | 16222-2 | Fitting (ALEMITE 1610B) | 5 | 1 |
| 15 | 26248 | Name Plate | 1 | |
| 16 | 16055-5 | Drive Screw (#10 x 3/8 Type U) | 4 | |
| 17 | 49043-1 | Cable Guard | 1 | |
| 18 | 16288-1272 | Cotter Pin (3/8 x 4-1/2) | 1 | |
| 19 | 49879-1 | Spacer | 2 | |
| 20 | 49879-2 | Spacer | 2 | |

*Welds to Winch Case.

CARCO MODEL 60-PS, PSM & PSC WINCH
 PARTS LIST SECTION—PAGE 36
 FAIRLEAD



INTEGRAL ARCH ASSEMBLY NO. 53299

| REF. | CARCO PART NO. | NAME AND DESCRIPTION | QUAN. PER UNIT |
|------|----------------|---------------------------------------|----------------|
| 1 | P50078 | Roller w/Bushing | 1 |
| 2 | P50080 | Shaft, Roller | 1 |
| 3 | 15178 | Cone | 4 |
| 4 | 15235 | Cup | 4 |
| 5 | 16044-24 | Nut (1-1/2 UNF Hex Jam) | 2 |
| 6 | 16044-36 | Nut (2-1/4 UNF Hex Jam) | 1 |
| 7 | 16047-504 | Cap Screw (5/16 UNC x 1/2 H.H.) | 1 |
| 8 | 16067-5 | Washer, Lock (5/16) | 1 |
| 9 | 16222-2 | Fitting, Grease (ALEMITE 16108) | 6 |
| 10 | 16288-832 | Pin, Cotter (1/4 x 2) | 4 |
| 11 | 16311-257 | Ring, Retaining (NAT'L. XSO-257 Ext.) | 2 |
| 12 | 16311-264 | Ring, Retaining (NAT'L. XSO-264 Ext.) | 1 |
| 13 | 30044 | Guard, Dust | 4 |
| 14 | 30045 | Retainer, Grease | 4 |
| 15 | 16287-6 | Pin, Clevis (LEITZKE, 1-1/2 x 4-1/4) | 4 |
| 16 | 53294 | Guard, Dust | 2 |
| 17 | 53292-1 | Lug, Gear Side, LH | 3 |
| 18 | 53292-2 | Lug, Brake Side, RH | 1 |
| 19 | 53293-01 | Washer | 1 |
| 20 | 53293-02 | Spacer | 2 |
| 21 | 53293-03 | Spacer | 1 |
| 22 | 53293-04 | Washer | 2 |
| 23 | 53293-07 | Spacer | 2 |
| 24 | 53293-10 | Spacer | 1 |
| 25 | 53295-1 | Shaft, Horizontal | 1 |
| 26 | 53295-2 | Shaft, Vertical | 2 |
| 27 | 30705 | Roller, Vertical | 2 |
| 28 | 53297 | Roller, Horizontal | 1 |
| 29 | 53298 | Frame | 1 |
| 30 | 15325 | Cup | 2 |
| 31 | 15326 | Cone | 2 |
| 32 | P50081 | Bushing | 2 |
| 33 | 53449 | Plate, Name | 1 |
| 34 | 16055-5 | Screw (#10 x 3/8 Type U) | 4 |
| 35 | 16064-24 | Washer (1-1/2) | 4 |

CAUTION: Mounting fasteners may change when installing arch to winch and tractor.
 Refer to winch arch mounting group page for fasteners.