

PARTS LIST SECTION

CARCO MODEL 60-PS, PSM AND PSC WINCH

WITH INTERNAL HYDRAULICS

FOR

CATERPILLAR 977L LOADER S/N 14X1 AND UP

	Page
BEVEL GEAR SHAFT	16-17
BEVEL GEAR AND BEVEL PINION CARRIER ASSY. (PS AND PSM)	19
BEVEL GEAR AND BEVEL PINION CARRIER ASSY. (PSC)	21
BRAKE CONTROL (PS, SPRING APPLIED)	28
BRAKE CONTROL (PSM AND PSC, MANUAL)	29
BRAKE CYLINDER	30
BRAKE SHAFT, BRAKE BAND AND LINING	23
CLUTCH	18
CONTROL GROUP (CONTROL STANDS, CONTROL CABLES, PRESSURE GAUGES)	4, 5, 6, 7
CONTROL STAND COMPONENTS (POWER SHIFT)	31
CONTROL STAND COMPONENTS (PSM AND PSC, MANUAL)	34
CONTROL STAND COMPONENTS (FREE SPOOL)	32-33
CONTROL VALVE	10-11
DRUM SHAFT STANDARD (NO FREE SPOOL)	25
DRUM SHAFT (WITH FREE SPOOL)	26-27
FAIRLEAD	37
HYDRAULIC TUBING AND FITTINGS	12-13
IDLER SHAFT (NO FREE SPOOL)	24
IDLER SHAFT (WITH FREE SPOOL)	26-27
INTEGRAL ARCH ASSEMBLY	39
MOUNTING GROUP WITH OR WITH OUT ARCH (PTO SHAFT, STUDS, CAP SCREWS)	3
PUMP GROUP (PUMP, TUBING, FILTER)	14-15
PRESSURE GAUGE KIT COMPONENTS	35-36
WINCH CASE	8-9

Note: Purchased parts, such as bearings and oil seals may be substituted with parts of equal quality on the manufacturer's recommendation, and with the approval of Pacific Car and Foundry Company.

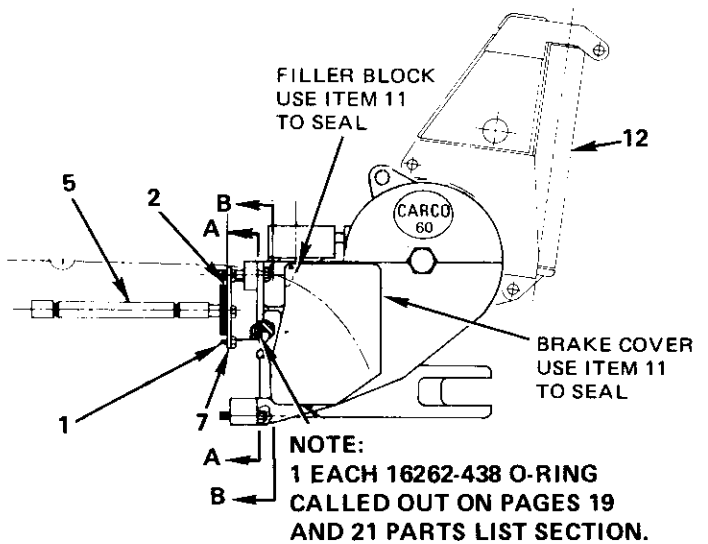
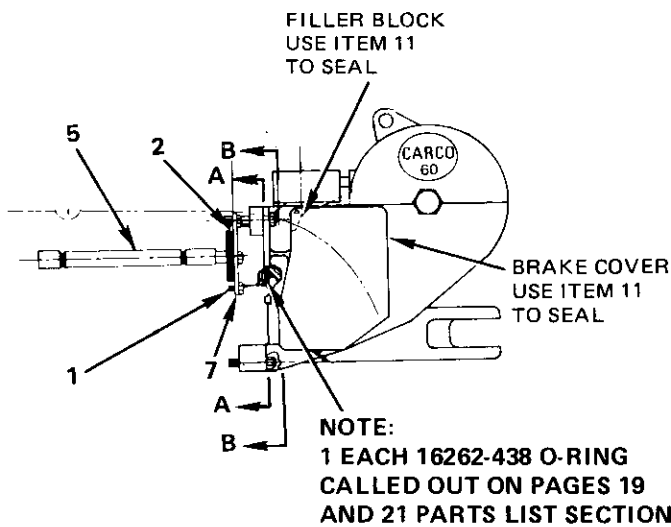
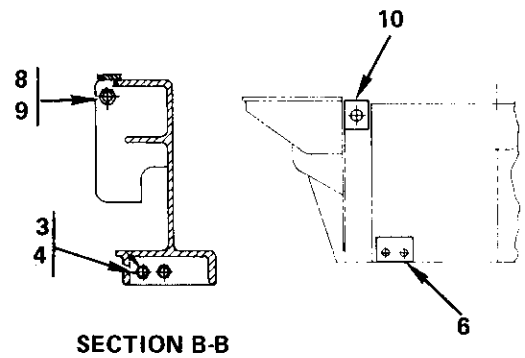
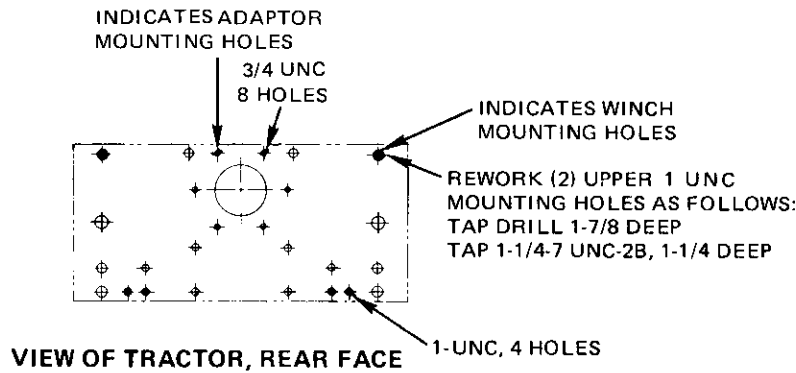
ATTENTION: Be sure to give correct part number, part name and complete serial number of winch when ordering. Also name and model of the tractor on which the winch is mounted

CARCO
WINCH PRODUCTS

PACIFIC CAR AND FOUNDRY COMPANY • A DIVISION OF **PACOR**

1400 NORTH FOURTH STREET, RENTON, WASHINGTON 98055 U.S.A.
TELEPHONE: (206) 235-2799 TELEX 32-8942

CARCO MODEL 60-PS, PSM & PSC WINCH
MOUNTING GROUP PARTS LIST—PAGE 3
CATERPILLAR 977L LOADER S/N 14X1 & UP

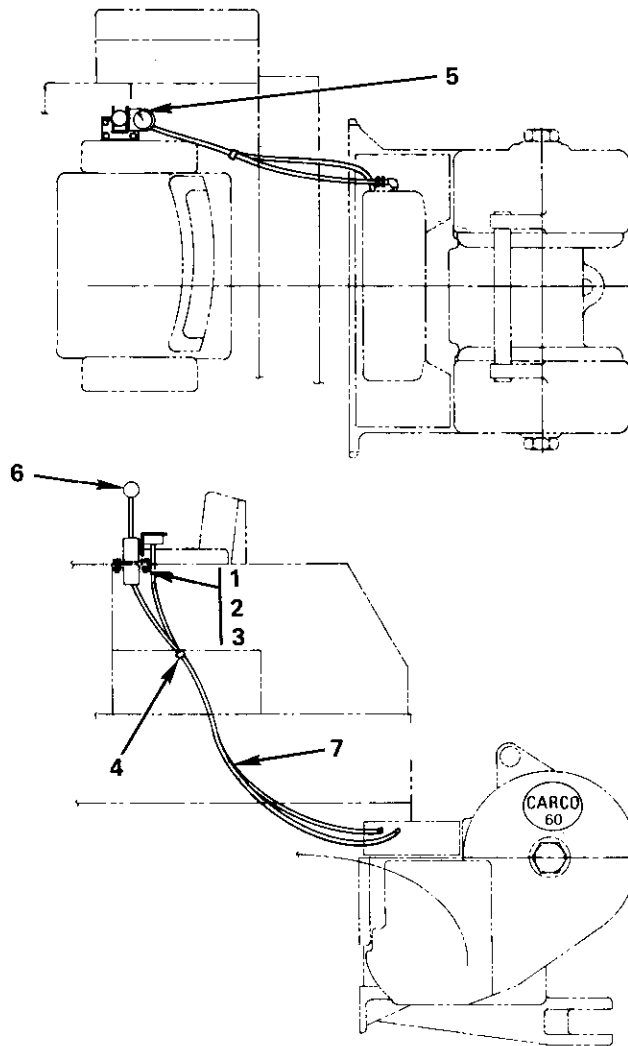


MOUNTING GROUP NO. 52924

REF.	CARCO PART NO.	NAME AND DESCRIPTION	QUAN. PER UNIT
1	16047-1210	Cap Screw, 3/4 UNC x 1-1/4 H.H.	6
2	16262-438	O-Ring, NAT'L. 622765	1
3	16400-16	Nut, 1 UNC HEX	4
4	45050-1642	Stud	4
5	45763-8	PTO Shaft Assembly	1
6	49264	Spacer	2
7	49267	Adapter	1
8	49510-3	Stud	2
9	16400-20	Nut, 1-1/4 UNC Hex	2
10	52795	Spacer	2
11	16453-5	Silastic Sealant (not shown) Dow-Corning 732RTV 5 oz. tube	1
* 12	53299	Integral Arch Assembly	1

*See page 39 for integral arch components.

CARCO MODEL 60-PS WINCH
 CONTROL GROUP PARTS LIST—PAGE 4
 CATERPILLAR 977L LOADER S/N 14X1 & UP

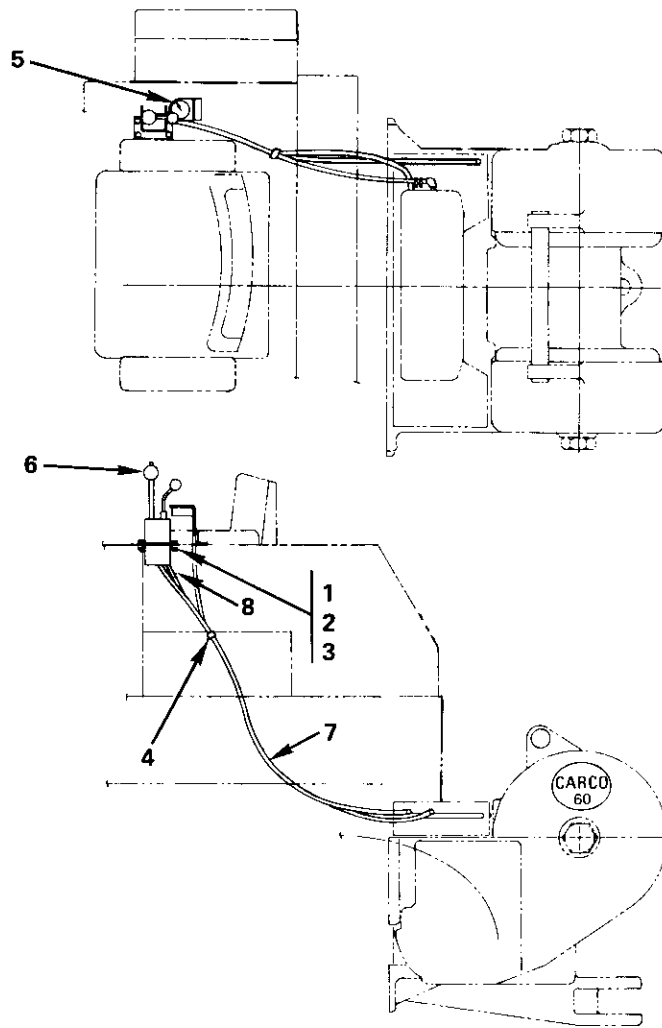


CONTROL GROUP (P.S. WITHOUT FREE SPOOL) NO. 52797

REF.	CARCO PART NO.	NAME AND DESCRIPTION	QUAN. PER UNIT
1	16033-6	Nut, 3/8 UNC Hex	4
2	16047-608	Cap Screw, 3/8 UNC x 1 H.H.	4
3	16067-6	Lock Washer ,3/8	4
4	16459-1	Retaining Strap, ADEL 668-4-8-DR	1
5	48700-120	Pressure Gauge Kit	1
6	49001-3	Control Stand, Power Shift	1
7	52000-084	Control Cable, Power Shift	1

NOTE: See page 28 for brake control group.

CARCO MODEL 60-PS WINCH
 CONTROL GROUP PARTS LIST—PAGE 5
 CATERPILLAR 977L LOADER S/N 14X1 & UP

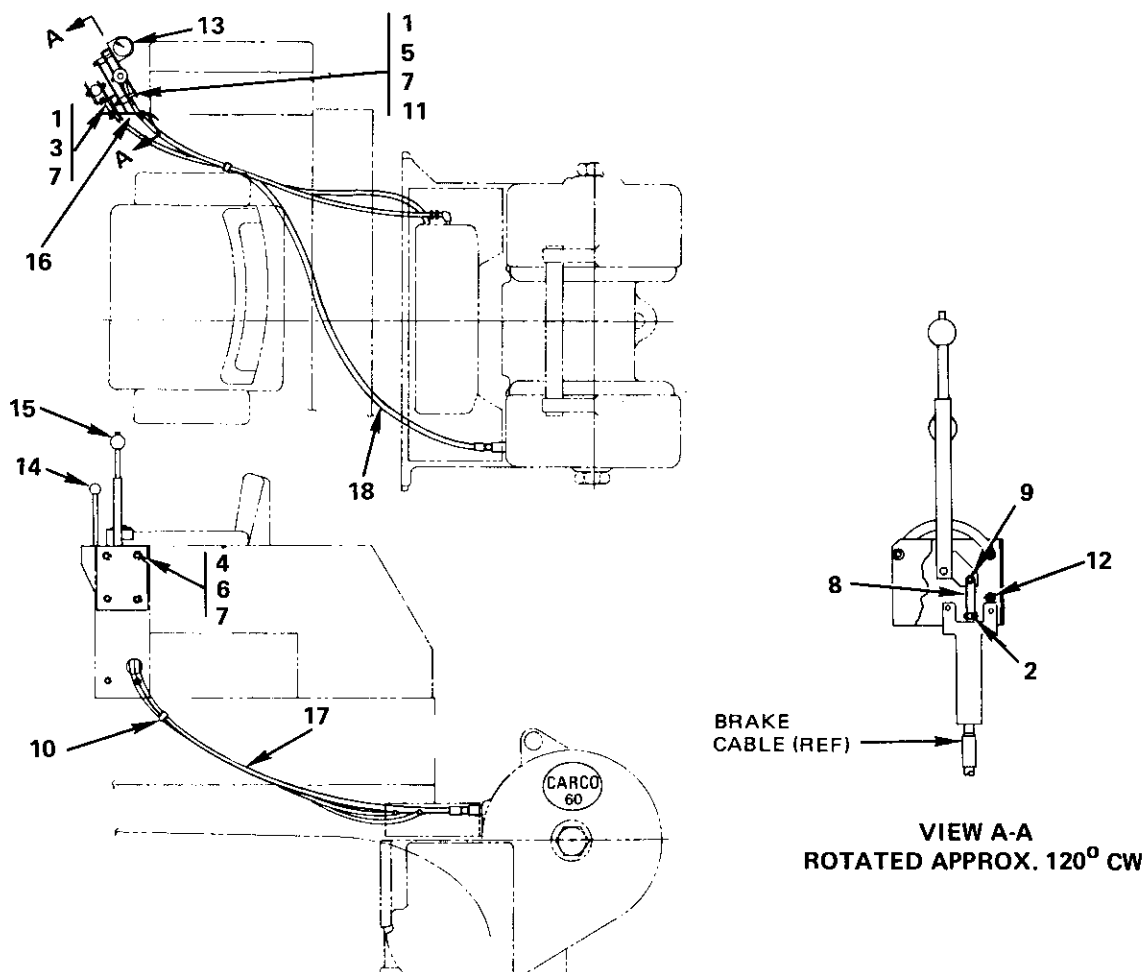


CONTROL GROUP (P.S. WITH FREE SPOOL) NO. 52798

REF.	CARCO PART NO.	NAME AND DESCRIPTION	QUAN. PER UNIT
1	16033-6	Nut, 3/8 UNC Hex	4
2	16047-608	Cap Screw, 3/8 UNC x 1 H.H.	4
3	16067-6	Lock Washer, 3/8	4
4	16459-1	Retaining Strap, ADEL 668-4-8-DR	1
5	48944-120	Pressure Gauge Kit	1
6	49805-8	Control Stand, Power Shift & Free Spool	1
7	52000-084	Control Cable, Power Shift	1
8	52000-090	Control Cable, Free Spool	1

NOTE: See page 28 for brake control group.

CARCO MODEL 60-PSM & PSC WINCH
 CONTROL GROUP PARTS LIST—PAGE 6
 CATERPILLAR 977L LOADER S/N 14X1 & UP

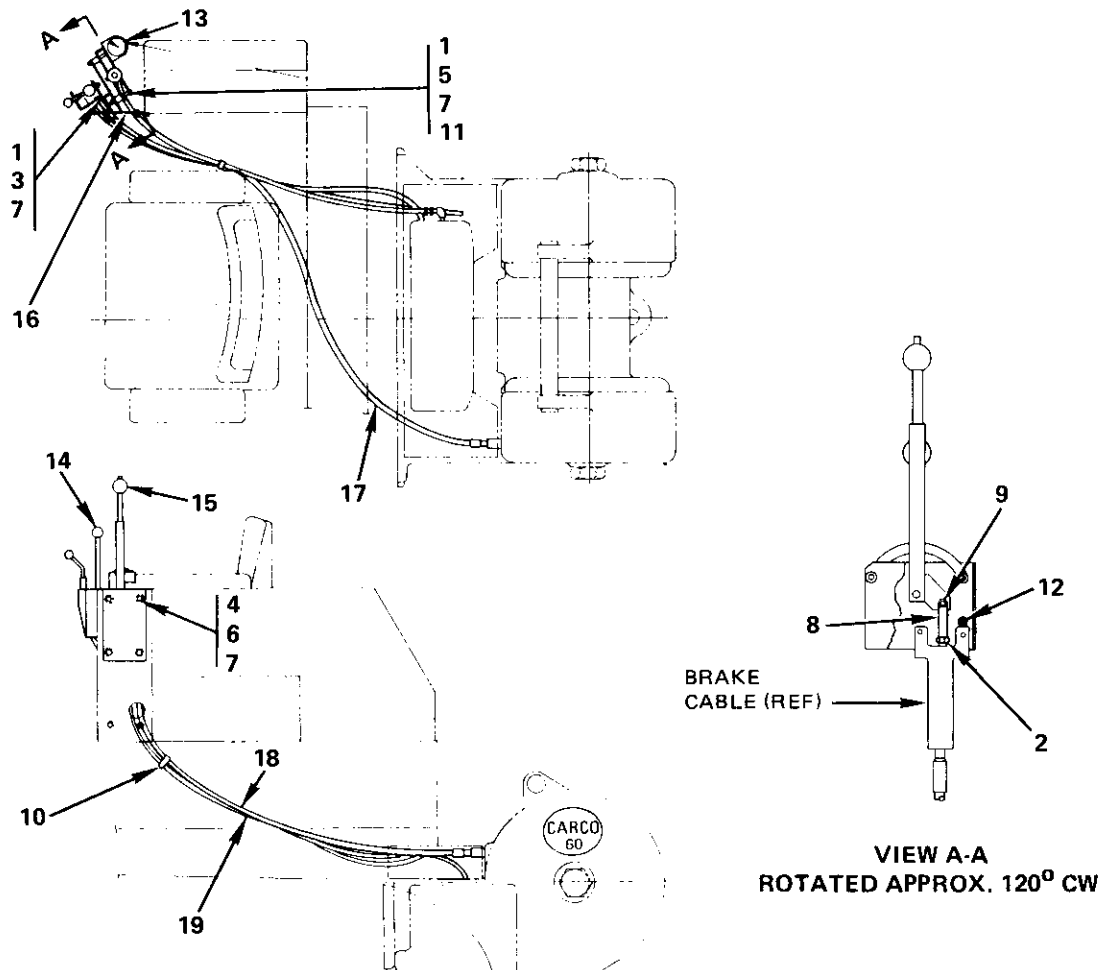


CONTROL GROUP (PSM & PSC WITHOUT FREE SPOOL) NO. 52799

REF.	CARCO PART NO.	NAME AND DESCRIPTION	QUAN. PER UNIT
1	16033-6	Nut, 3/8 UNC Hex	5
2	16044-6	Jam Nut, 3/8 UNF Hex	1
3	16047-608	Cap Screw, 3/8 UNC x 1 H.H.	2
4	16047-610	Cap Screw, 3/8 UNC x 1-1/4 H.H.	4
5	16047-628	Cap Screw, 3/8 UNC x 3-1/2 H.H.	3
6	16064-6	Washer, 3/8	4
7	16067-6	Lock Washer, 3/8	9
8	16245-6	Yoke, CLEVELAND 2708-4A	1
9	16246-6	Pin Assembly, CLEVELAND 2708-1/2-4A	1
10	16459-1	Retaining Strap, ADEL 668-4-8-DR	1
11	46126-607	Spacer	3
12	46126-610	Spacer	1
13	48700-120	Pressure Gauge Kit	1
14	49001-1	Control Stand, Power Shift	1
15	49434-8	Control Stand, Brake	1
16	52954-1	Control Stand, Bracket	1
17	52000-084	Control Cable, Power Shift	1
18	48850-108	Control Cable, Brake	1

NOTE: See page 29 for brake control group.

CARCO MODEL 60-PSM & PSC WINCH
 CONTROL GROUP PARTS LIST—PAGE 7
 CATERPILLAR 977L LOADER S/N 14X1 & UP

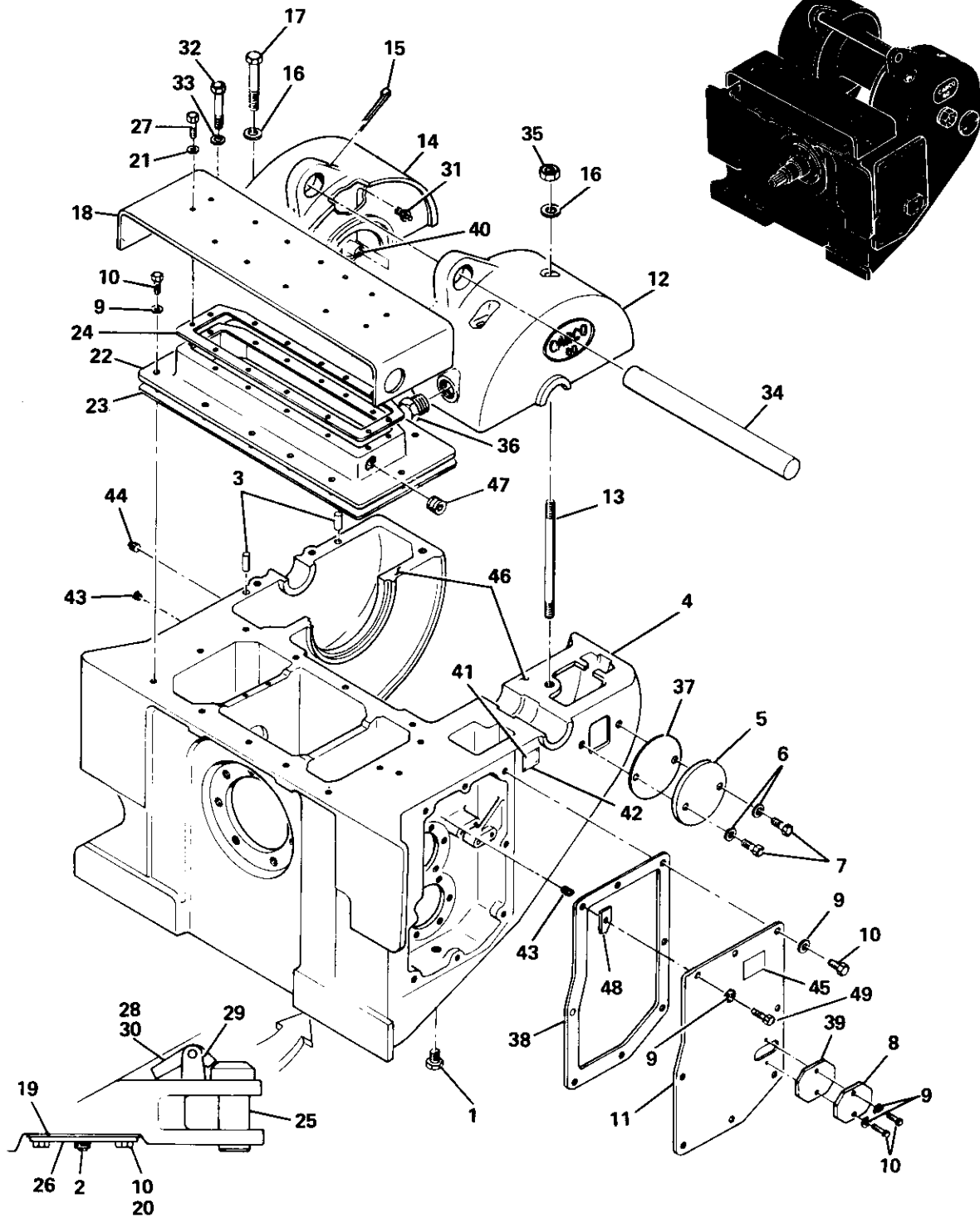


CONTROL GROUP (PSM & PSC WITH FREE SPOOL) NO. 53451

REF.	CARCO PART NO.	NAME AND DESCRIPTION	QUAN. PER UNIT
1	16033-6	Nut, 3/8 UNC Hex	6
2	16044-6	Jam Nut, 3/8 UNF Hex	1
3	16047-608	Cap Screw, 3/8 UNC x 1 H.H.	2
4	16047-610	Cap Screw, 3/8 UNC x 1-1/4 H.H.	4
5	16047-628	Cap Screw, 3/8 UNC x 3-1/2 H.H.	3
6	16064-6	Washer, 3/8	4
7	16067-6	Lock Washer, 3/8	9
8	16245-6	Yoke, CLEVELAND 2708-4A	1
9	16246-6	Pin Assembly, CLEVELAND 2708-1/2-4A	1
10	16459-1	Retaining Strap, ADEL 668-4-8-DR	1
11	46126-607	Spacer	3
12	46126-610	Spacer	1
13	48700-120	Pressure Gauge Kit	1
14	49805-1	Control Stand, Power Shift & Free Spool	1
15	49434-8	Control Stand, Brake	1
16	52954-1	Control Stand, Bracket	1
17	48850-108	Control Cable, Brake	1
18	52000-084	Control Cable, Power Shift	1
19	52000-090	Control Cable, Free Spool	1

NOTE: See page 29 for brake control group.

CARCO MODEL 60-PS, PSM & PSC WINCH
 PARTS LIST SECTION—PAGE 8
 WINCH CASE
 CATERPILLAR 977L LOADER S/N 14X1 & UP



WINCH CASE

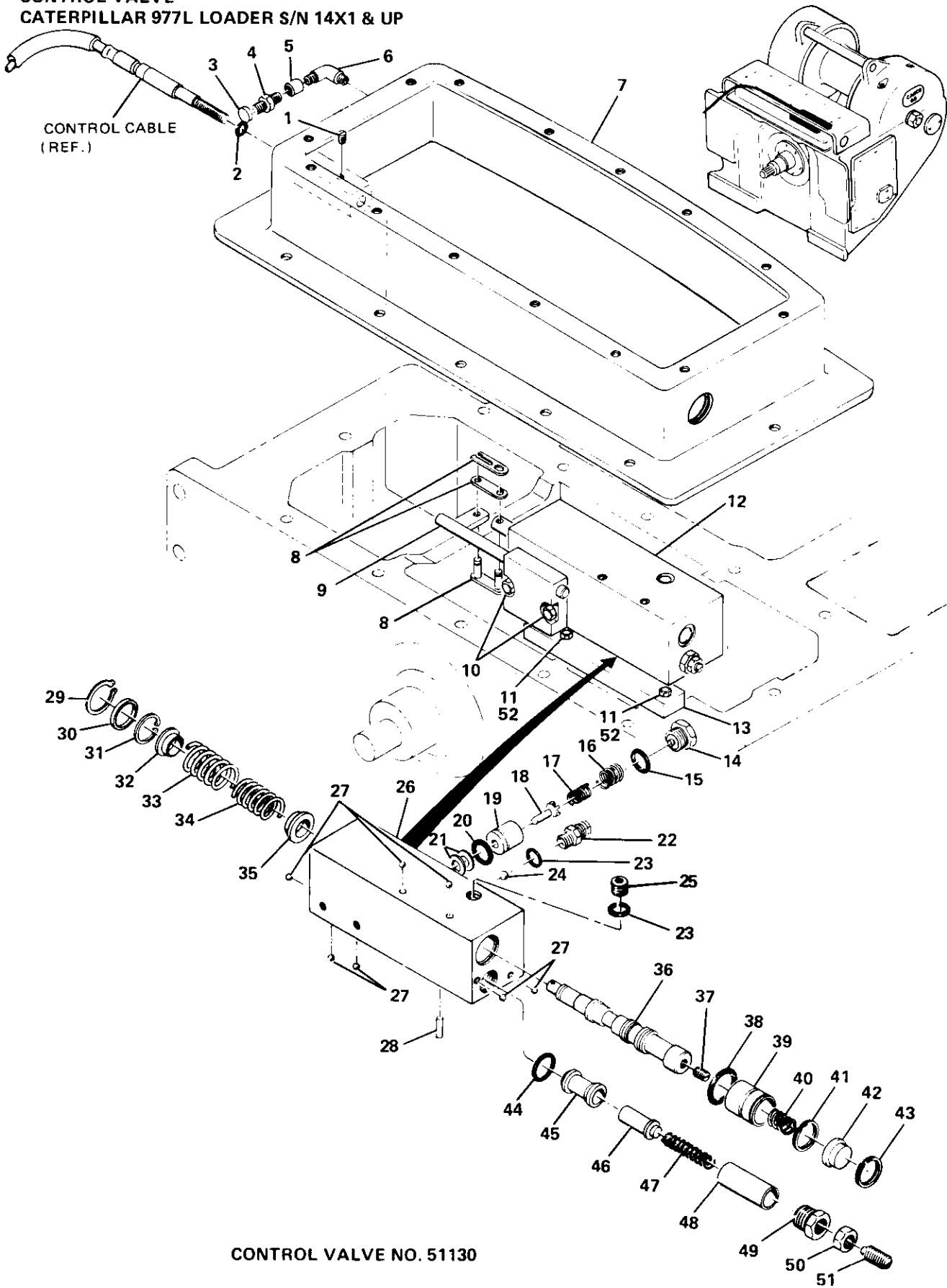
CARCO MODEL 60-PS, PSM & PSC WINCH
PARTS LIST SECTION—PAGE 9
WINCH CASE
CATERPILLAR 977L LOADER S/N 14X1 & UP

REF.	CARCO PART NO.	NAME AND DESCRIPTION	QUAN. PER UNIT
1	16169-8	Plug, 1/2 NPT Sq. Hd.	1
2	16168-16	Plug, 1 NPTF Mag. Sq. Hd.	1
3	16290-1616	Dowel Pin, 1/2 x 1	2
* 4	51901	Case Complete (includes items 12 and 14)	1
5	42048	Cover	1
6	16064-10	Washer, 5/8	2
7	16047-1008	Cap Screw, 5/8 UNC x 1 H.H.	2
8	44816	Cover	1
9	16064-8	Washer, 1/2	22
10	16047-810	Cap Screw, 1/2 UNC x 1-1/4 H.H.	39
11	45972	Cover	1
* 12	44415	Brake Case Cover	1
13	45050-1655	Stud	2
* 14	44440	Gear Case Cover	1
15	16288-1272	Cotter Pin, 3/8 x 4-1/2	1
16	16064-16	Washer, 1	4
17	16047-1628	Cap Screw, 1 UNC x 3-1/2 H.H.	2
18	52321	Valve Housing Cover	1
19	51890	Filter Cover Gasket	1
20	16067-8	Lock Washer, 1/2	16
21	16064-6	Washer, 3/8	14
22	Reference Only	Housing (See Page 11 item 7)	1
23	51144	Gasket	1
24	51535	Gasket	1
25	52037	Drawbar Pin	1
26	51889	Suction Filter Cover	1
27	16047-608	Cap Screw, 3/8 UNC x 1 H.H.	14
28	16246-8	Yoke Pin Assembly, CLEVELAND 2708½-6A	1
29	52084	Support Bracket	1
30	52085	Latch,	1
31	16249-1	Relief Plug, ALEMITE 317400	1
32	16047-1220	Cap Screw, 3/8 UNC x 2-1/2 H.H.	4
33	16064-12	Washer, 3/8	4
34	49043-1	Cable Guard (includes item 15)	1
35	16033-16	Nut, 1 UNC Hex	2
36	16220-38	Plug, WHITE 1604-136-Y	1
37	44833	Gasket	1
** 38	Ref. Only	See Note Below	1
39	44815	Gasket	1
40	16150-2	Elbow, 1/8 NPT 90° Street	1
41	16055-5	Drive Screw, #10 x 3/8 Type U	4
42	52126	Name Plate	1
43	16167-6	Plug, 3/8 NPT Hex Soc.	2
44	16169-20	Plug, 1-1/4 NPT Sq. Hd.	1
45	49044	Instruction Plate	1
** 46	16453-5	Sealant (Not Shown), DOW-CORNING Silastic No. 732 RTV 5 oz. tube	1
47	16167-24	Pipe Plug, 1-1/2 Hex Soc.	1
48	52980	Brake Cover Block	1
49	16047-814	Cap Screw, 1/2 UNC x 1-1/2 H.H.	1

*Items 4, 12 and 14 cannot be ordered separately.

**Model 60 winches do not use a gasket. Use Silastic Sealer #732 RTV, item 46 or equivalent to seal items 11, 12 and 14 to case.

CARCO MODEL 60-PS, PSM & PSC WINCH
 PARTS LIST SECTION—PAGE 10
 CONTROL VALVE
 CATERPILLAR 977L LOADER S/N 14X1 & UP



CARCO MODEL 60-PS, PSM & PSC WINCH
PARTS LIST SECTION—PAGE 11
CONTROL VALVE
CATERPILLAR 977L LOADER S/N 14X1 & UP

REF.	CARCO PART NO.	NAME AND DESCRIPTION	QUAN. PER UNIT
1	16056-612	Set Screw, 3/8 UNC x 3/4 Hex Soc. Cup Pt.	1
2	16262-115	O-Ring, NAT'L. 622713	1
3	16445-4	Cap Nut, AEROQUIP 21029-4	1
4	16129-44	Connector, WTHRD. C5205 x 4 x 4	1
5	16362-44	Snubber, CHEMIQUIP 25B-D	1
6	16171-44	Elbow, WTHRD. 3400 x 4	1
7	51124-050	Valve Housing	1
8	16364-2040	Connecting Link, ANSI 2040	1
9	51865	Cable Guide	1
10	16047-610	Cap Screw, 3/8 UNC x 1-1/4 H.H.	2
11	16047-612	Cap Screw, 3/8 UNC x 1-1/2 H.H.	2
12	51130	Control Valve	1
13	51698-1	Support Assembly	1
14	51883-1	Retainer Assembly	1
15	16262-912	O-Ring, NAT'L. 600501	1
16	51894	Spring	1
17	52392	Spring	1
18	51164	Accumulator Check Piston	1
19	51886	Seat	1
20	16262-116	O-Ring, NAT'L. 622714	1
21	51881-10	Shim Set	1
22	52289	Connector (Also shown on page 13)	1
23	16262-908	O-Ring, NAT'L. 600503 (Also shown on page 13)	2
24	16471-8	Ball Check, Nylon Type 101 (Also shown on page 13)	1
25	16496-8	Plug, Parker 8HP50N-S	1
*	26	Valve Body	1
	27	Steel Ball, 1/2	7
	28	Dowel Pin, 1/4 x 7/8	1
	29	Retaining Ring, TRUARC N5000-150	1
	30	Washer	1
	31	Retaining Ring, TRUARC 5100-75	1
	32	Spring Stop	1
	33	Outer Spring	1
	34	Inner Spring	1
	35	Spring Stop	1
*	36	Valve Spool (See note & kit No. below)	1
	37	Set Screw, 3/8 UNF x 1/2 Hex Soc. Cup Pt.	1
	38	O-Ring, NAT'L. 622720	1
*	39	Piston (See note & kit No. below)	1
	40	Spring	1
	41	Retaining Ring, SPIROLOX RS-131	1
	42	Spring Stop	1
	43	Retaining Ring, SPIROLOX RR-157	1
	44	O-Ring, NAT'L. 622715	1
**	45	Relief Valve Seat	1
**	46	Relief Valve Piston	1
	47	Spring, LEMPCO 9-1016-2	1
**	48	Relief Valve Tube	1
	49	Retaining Screw	1
	50	Jam Nut, 3/4 UNF Hex	1
	51	Adjusting Screw	1
	52	Washer, 3/8	2

*Items 26, 36 & 39 not serviced separately. Order 51130 control valve.

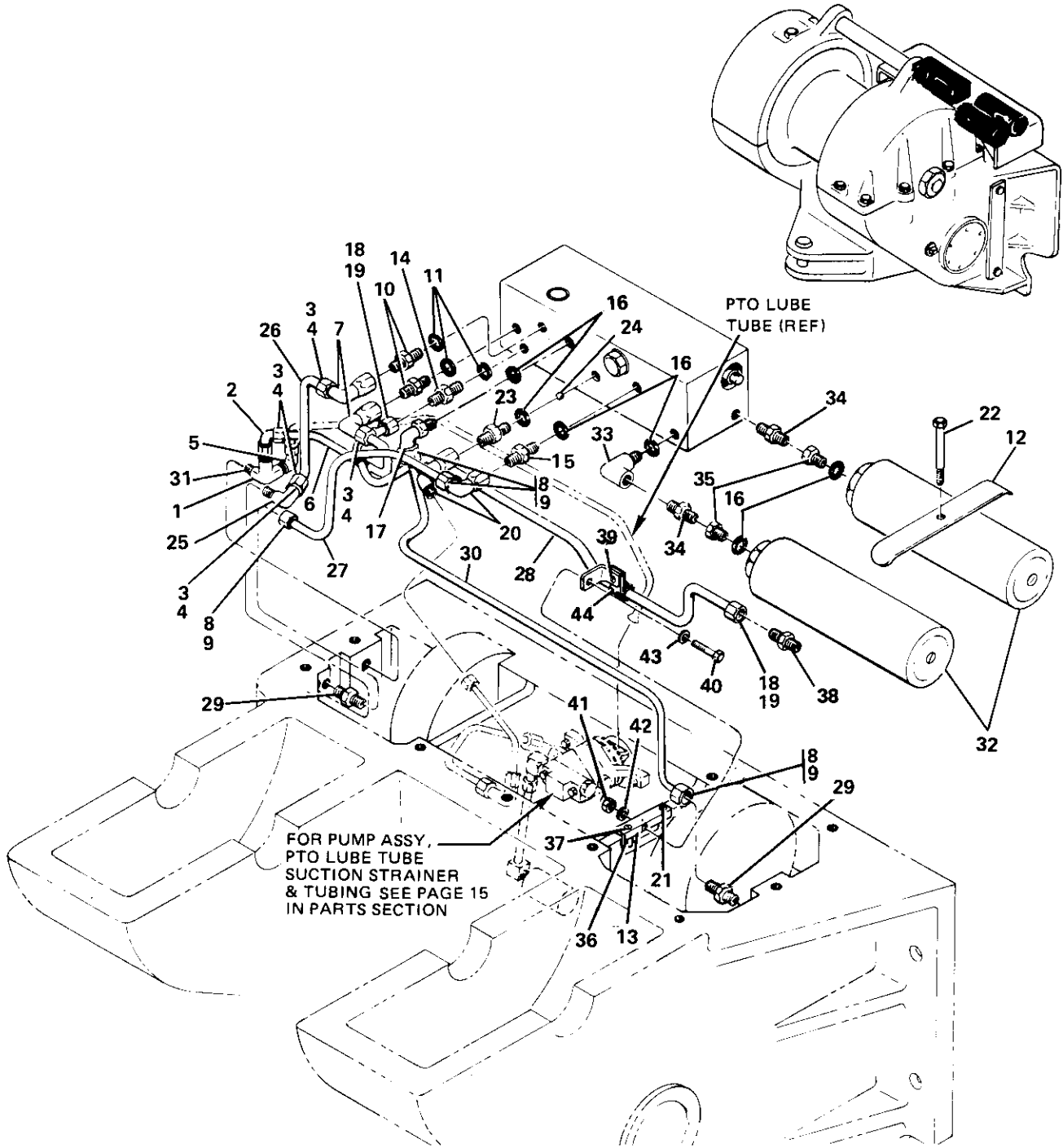
**Available in kit only. See No. 52652 kit below.

NOTE: To service valve spool, order repair kit No. 52651 consisting of items 24, 29, 31, 33, 34, 37, 38, 40, 41 and 43.

To service relief valve, order repair kit No. 52652 consisting of items 44, 45, 46, 47 and 48.

To service accumulator check valve, order repair kit No. 52653 consisting of items 15, 16, 17, 18, 19, 20 and 21.

CARCO MODEL 60-PS, PSM & PSC WINCH
 PARTS LIST SECTION—PAGE 12
 HYDRAULIC TUBING & FITTINGS
 CATERPILLAR 977L LOADER S/N 14X1 & UP



**NOTE: PUMP MOUNTED ON BRAKE SIDE, NO. 51349-3.
 BEVEL GEAR INSTALLED ON GEAR SIDE OF BEVEL PINION.
 BEVEL PINION ROTATION IS C.C.W. AS VIEWED FROM REAR
 OF TRACTOR.**

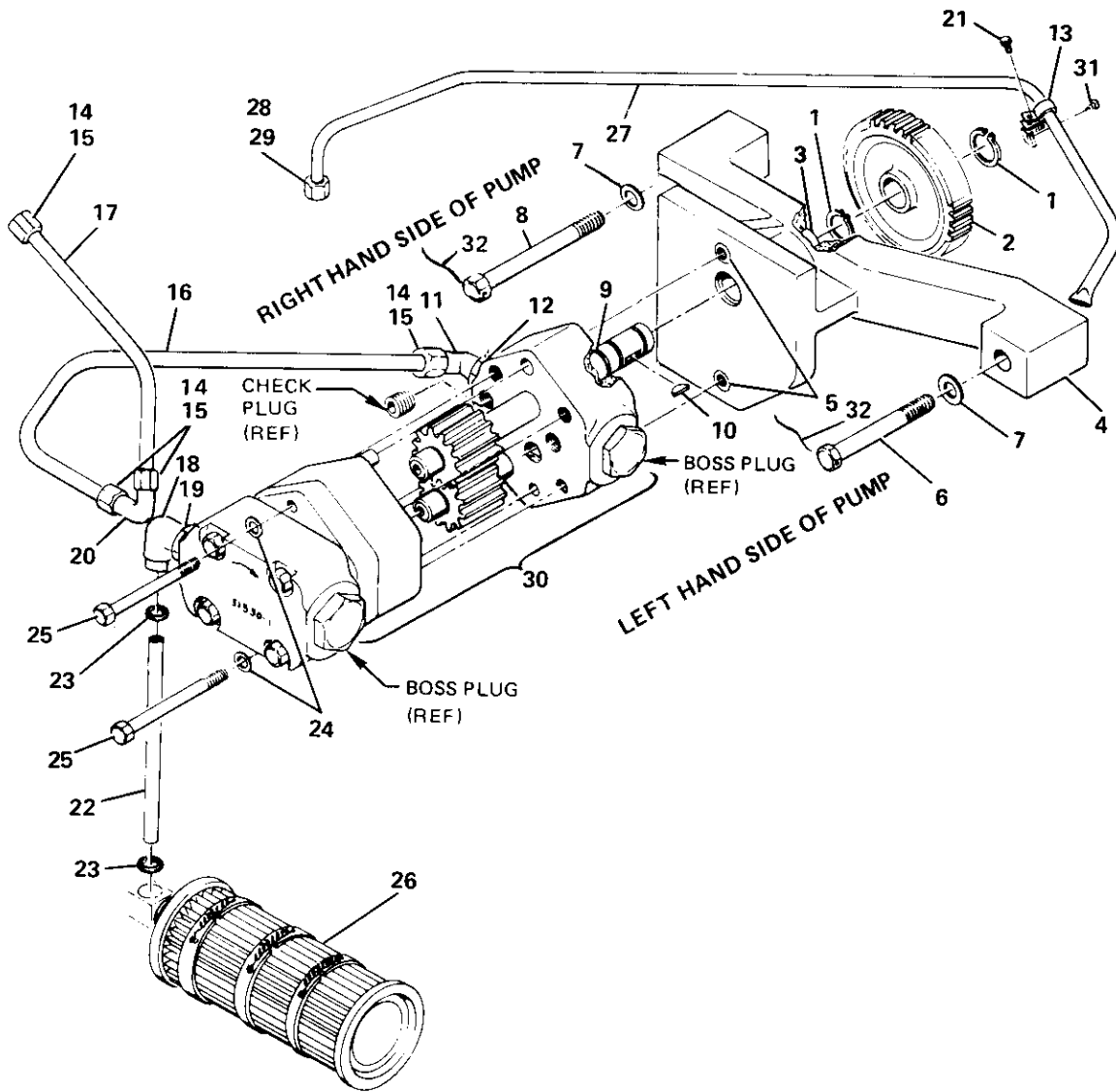
HYDRAULIC TUBING AND FITTINGS NO. 51267

CARCO MODEL 60-PS, PSM & PSC WINCH
PARTS LIST SECTION—PAGE 13
HYDRAULIC TUBING & FITTINGS
CATERPILLAR 977L LOADER S/N 14X1 & UP

REF.	CARCO PART NO.	NAME AND DESCRIPTION	QUAN. PER UNIT
1	16497-0004	Elbow, GRINELL 1109	1
2	16137-0064	Elbow, WTHRD. 7405 x 6	1
3	16521-6	Nut, PARKER BU6	4
4	16522-6	Sleeve, PARKER TU6	4
5	16137-44	Elbow, WTHRD. 7405 x 4 x 4	1
6	51957-04	Brake Return Tube	1
7	16485-0006	Elbow, WTHRD. 7506 x 6	2
8	16521-8	Nut, PARKER BU8	4
9	16522-8	Sleeve, PARKER TU8	4
10	16481-0006	Connector, WTHRD. 7315 x 6	2
11	16262-906	O-Rings, NAT'L. 600593	3
12	51869	Clamp	1
13	51868	Plate	1
14	16481-0046	Connector, WTHRD. 7315 x 4 x 6	1
15	16481-8	Connector, WTHRD. 7315 x 8	1
16	16262-908	O-Ring, NAT'L. 600503	6
17	16476-8	Elbow, 7515 x 8	1
18	16521-4	Nut, PARKER BU4	2
19	16522-4	Sleeve, PARKER TU4	2
20	16485-0008	Elbow, WTHRD. 7506 x 8	2
21	16047-407	Cap Screw, 1/4 UNC x 7/8 H.H.	1
22	16357-0820	Shoulder Screw, 3/8 UNC x 2-1/2 Hex. Soc. Hd.	1
23	52289	Connector	1
24	16471-8	Ball Check, Nylon Type 101	1
25	16137-0066	Elbow, WTHRD. 7405 x 6 x 6	1
26	51957-01	Brake Pressure Tube	1
27	51958-07	Forward Clutch Tube	1
28	51956-01	Pressure Gauge Tube	1
29	16482-0086	Connector, WTHRD. 7205 x 8	2
30	51958-10	Reverse Clutch Tube	1
31	16158-407	Nipple, 1/4 NPT x 7/8	1
32	16475-2	Accumulator, GREER 5-30RSC-S-1/2	2
33	16498-0086	Elbow, WTHRD. C3459 x 8	1
34	16160-06	Nipple, WTHRD. C3069 x 6	2
35	16114-0086	Adapter, WTHRD. C3269 x 8 x 6	2
36	46126-407	Spacer	1
37	16047-414	Cap Screw, 1/4 UNC x 1-3/4 H.H.	1
38	16482-0044	Connector, WTHRD. 7205 x 4 x 4	1
39	16021-3	Machine Screw, 10-24 UNC x 5/8 Rd. Hd.	1
40	16021-12	Machine Screw, 10-24 UNC x 1-1/2 Rd. Hd.	1
41	16033-1024	Nut, 10-24 UNC Hex	1
42	16069-3	Star Washer, #10 Ext. Tooth	1
43	16077-3	Washer, 3/16	1
44	16520-01	Swivel Clamp, ADEL 1789-X4-4	1

* These items also shown with control valve, page 11 .

CARCO MODEL 60-PS, PSM & PSC WINCH
 PARTS LIST SECTION—PAGE 14
 PUMP GROUP
 CATERPILLAR 977L LOADER S/N 14X1 & UP



NOTE: ROTATION C.C.W. AS VIEWED FROM SHAFT END OF PUMP.
 PORT LOCATIONS, RIGHT HAND SIDE.
 CHECK PLUG AND END CAP LOCATION, RIGHT HAND SIDE.
 BEVEL GEAR INSTALLED ON GEAR SIDE OF BEVEL PINION.

PUMP GROUP NO. 51349-3

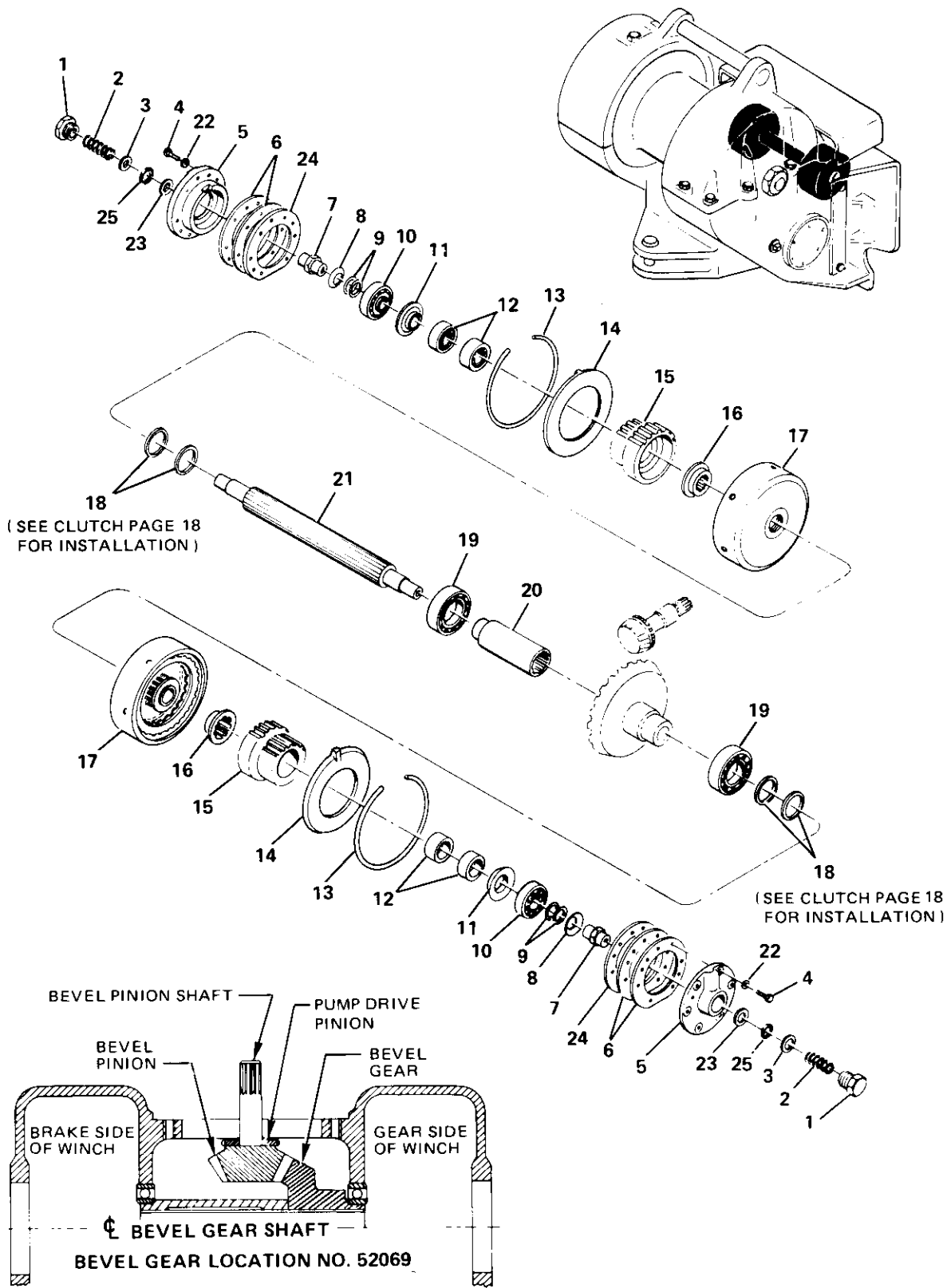
CARCO MODEL 60-PS, PSM & PSC WINCH
PARTS LIST SECTION—PAGE 15
PUMP GROUP
CATERPILLAR 977L LOADER S/N 14X1 & UP

REF.	CARCO PART NO.	NAME AND DESCRIPTION	QUAN. PER UNIT
1	16313-62	Retaining Ring, TRUARC 5100-62	2
2	51056	Gear	1
3	15305	Needle Bearing	1
* 4	51525-1	Mount Assembly (Includes Items 3 and 5)	1
5	16507-0003	Threaded Insert	2
6	16024-15	Cap Screw, 3/8 UNC x 1-3/4 Dr. Hd.	1
7	16348-1	Washer, CARR LANE CL-1-FW	2
8	16024-16	Cap Screw, 3/8 UNC x 2-1/4 Dr. Hd.	1
9	16284-95	Pump Shaft Seal, WEBSTER 151-35818	1
10	16226-7	Key, WOODRUFF No. 3, 1/8 x 1/2	1
11	16476-8	Elbow, WTHR'D. 7515 x 8	1
12	16262-908	O-Ring, NAT'L. 600503	1
13	16520-01	Swivel Clamp, ADEL 1789-X44	1
14	16521-8	Nut, PARKER BU8	4
15	16522-8	Sleeve, PARKER TU8	4
16	51958-13	Pump Tube	1
17	51958-02	Pressure Tube	1
18	16474-12	Elbow, LENZ A-405-12	1
19	16262-912	O-Ring, NAT'L. 600501	1
20	16509-08	Elbow, WTHR'D. 7505 x 8	1
21	16021-3	Screw, 10-24 UNC x 5/8 Rd. Hd.	1
22	51959-52	Suction Tube	1
23	16262-116	O-Ring, NAT'L. 622714	2
24	16069-4	Lock Washer, 1/4 Ext. Tooth	2
25	16047-428	Cap Screw, 1/4 UNC x 3-1/2 H.H.	2
26	16473	Filter, MARVEL 620-5-M-200	1
27	51956-05	PTO Lube Tube	1
28	16521-4	Nut, PARKER BU4	1
29	16522-4	Sleeve, PARKER TU4	1
** 30	51530-1	Pump (See Below)	1
31	16055-12	Tapping Screw, 1/4 x 3/4 Type F Fl. Hd.	1
32	48125-2	Wire, 16 Ga. x 18"	1

* Item 4 is part of 51529-3 pump assembly.

** No pump parts other than items 9 and 10 are serviceable items. Order 51530-1 pump

CARCO MODEL 60-PS, PSM & PSC WINCH
 PARTS LIST SECTION—PAGE 16
 BEVEL GEAR SHAFT
 CATERPILLAR 977L LOADER S/N 14X1 & UP

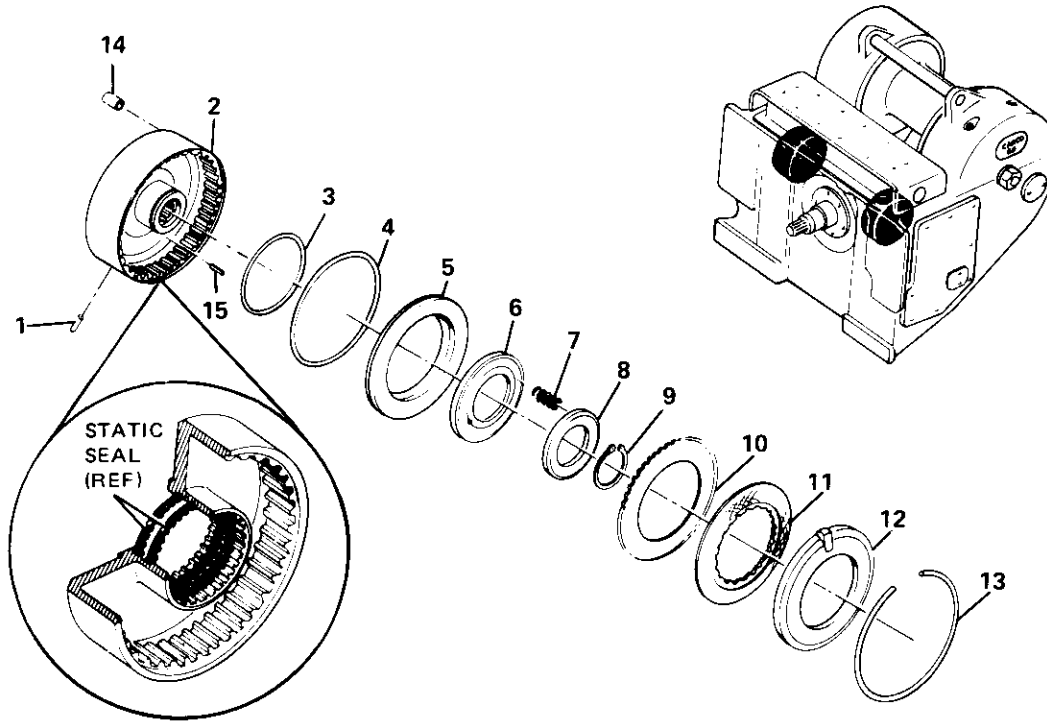


BEVEL GEAR SHAFT GROUP NO. 52048

CARCO MODEL 60-PS, PSM & PSC WINCH
PARTS LIST SECTION—PAGE 17
BEVEL GEAR SHAFT
CATERPILLAR 977L LOADER S/N 14X1 & UP

REF.	CARCO PART NO.	NAME AND DESCRIPTION	QUAN. PER UNIT
1	16166-20	Plug, PARKER 05PO-20	2
2	44753	Spring	2
3	44949	Seal (includes item 25)	2
4	16047-810	Cap Screw, 1/2 UNC x 1-1/4 H.H.	12
5	44432	Retainer	2
6	44431	Shim Set	2
7	41742	Stub Shaft	2
8	44478	Clamp Ring	2
9	44336	Shim Set	2
10	15179	Bearing Cup	2
11	15180	Bearing Cone	2
12	45018	Thrust Washer	2
13	15253	Bearing Set (Matched)	2
14	44446	Retaining Ring	2
15	44343	Retaining Ring	2
16	48864	Pinion	2
17	45017	Thrust Washer	2
18	51271 -1	Clutch (See Page 18 for Clutch Parts. includes items 13 and 14)	2
19	44452	Static Seal	4
20	15030	Ball Bearing	2
21	51080	Spacer	1
22	44433	Shaft	1
23	16064-8	Washer, 1/2	12
24	44940	Washer	2
25	45028	Gasket	2
26	16262-121	O-Ring, NAT'L. 610067	2

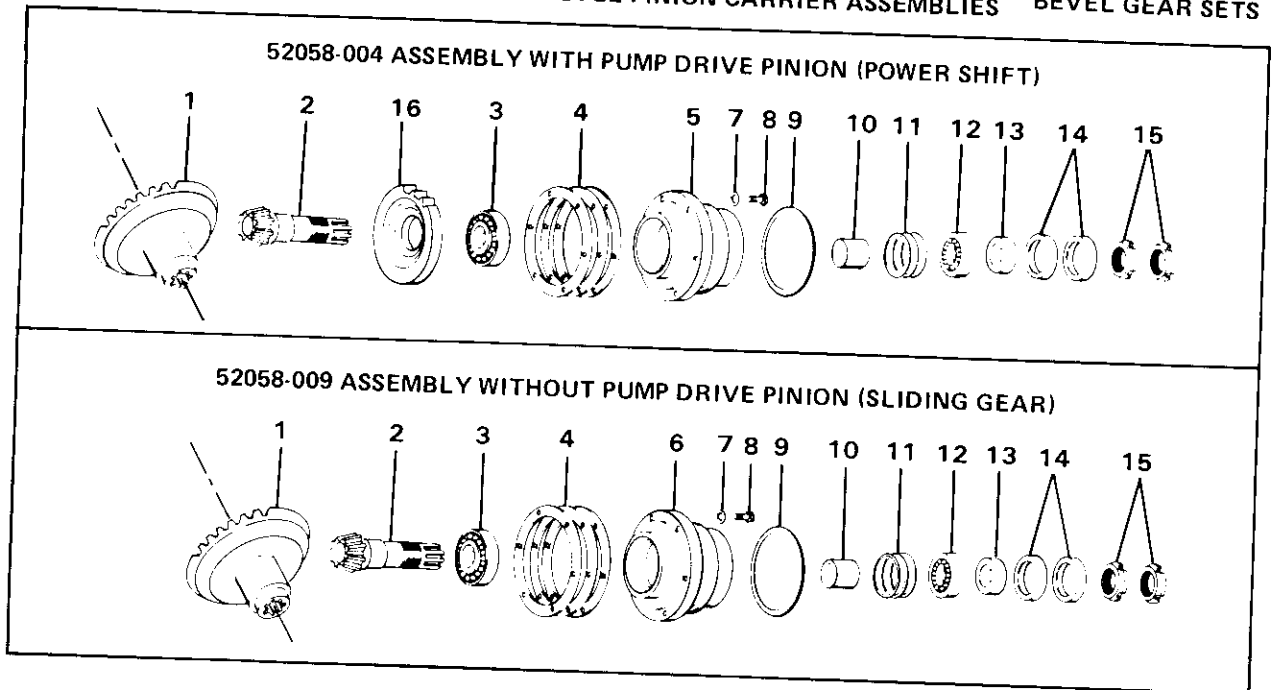
CARCO MODEL 60-PS, PSM & PSC WINCH
 PARTS LIST SECTION—PAGE 18
 CLUTCH
 CATERPILLAR 977L LOADER S/N 14X1 & UP



NOTE: ALL RELATED CLUTCH PARTS NOT SHOWN MUST BE ORDERED FROM PAGE 17.

CLUTCH—NO. 51271-1

REF.	CARCO PART NO.	NAME AND DESCRIPTION	QUAN. PER CLUTCH
1	16290-808	Dowel Pin, 1/4 x 1/2	1
2	51270-1	Housing (includes items 1 and 14)	1
3	46242	Seal	1
4	46243	Seal	1
5	44445	Piston	1
6	44450	Ring	1
7	44449	Spring	16
8	44448	Retainer	1
9	16313-287	Retaining Ring, TRUARC 5100-287	1
10	46134	Steel Disc (External Splines)	5
11	46133	Friction Disc (Internal Splines)	4
12	44343	Retaining Ring	1
13	44446	Retaining Ring	1
14	52593	Seat Assembly	1
15	16295-1424	Pin, SPIROL 437-1500-H-B-K	1



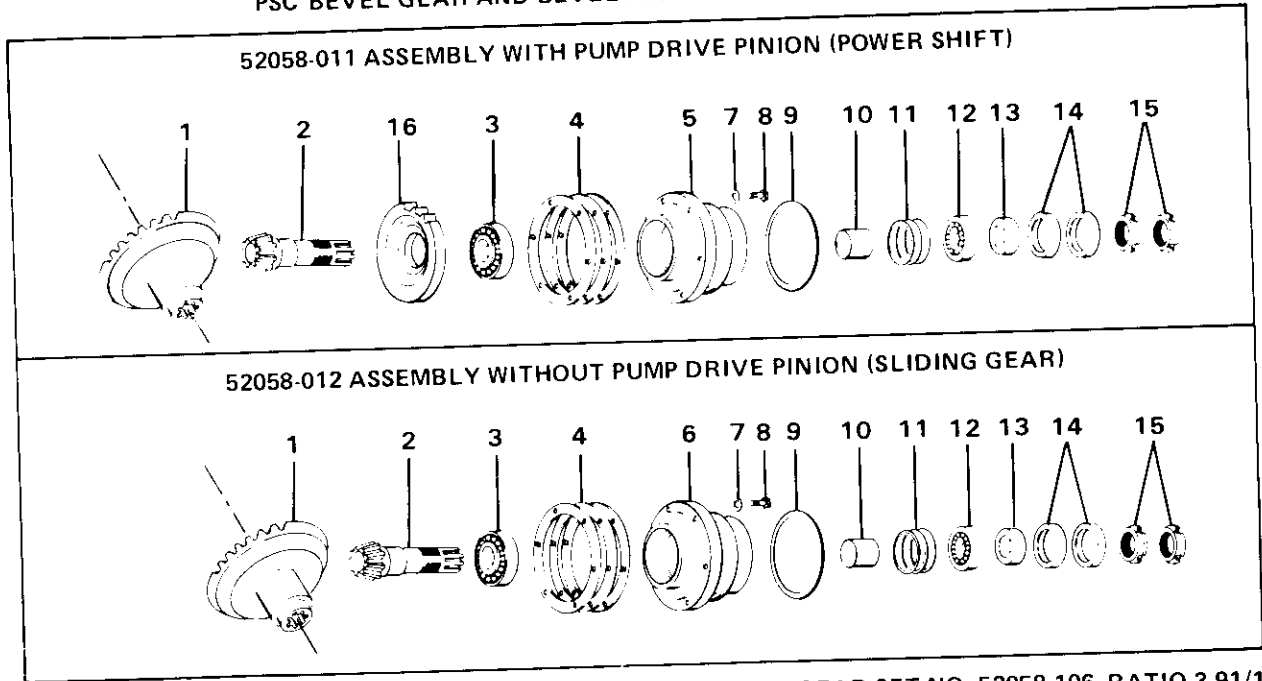
GEAR SET NO. 52058-104 RATIO 1.94/1

REF.	CARCO PART NO.	NAME AND DESCRIPTION	52058-004 QUAN. PER UNIT	52058-009 QUAN. PER UNIT
1	50822	Bevel Gear (31 Teeth)	1	1
2	50821	Bevel Pinion (16 Teeth)	1	1
3	{ 15173	Tapered Roller Bearing Cup	1	1
	{ 15175	Tapered Roller Bearing Cone	1	1
4	16237	Shim Set, TIMKEN 29	1	1
5	50914	Carrier (P.S. Winch)	1	1
6	44297	Carrier (S.G. Winch)	1	Not Used
7	16064-8	Washer, 1/2	Not Used	1
8	16047-810	Cap Screw, 1/2 UNC x 1-1/4 H.H.	6	6
9	16262-438	O-Ring, NAT'L. 622765	6	6
10	45084-5	Spacer	1	1
11	45088	Shim Set	1	1
12	{ 15148	Tapered Roller Bearing Cup	1	1
	{ 15149	Tapered Roller Bearing Cone	1	1
13	44348	Sleeve	1	1
14	16343-11	Oil Seal, NAT'L. 455079	1	1
15	16041-8	Lock Nut, TIMKEN N-08	2	2
16	51054	Pump Drive Pinion	2	2
			1	Not Used

NOTE: The Bevel Gear Set above is standard for the adaption indicated. Below are optional gear combinations to provide a range of line speeds and pulls for various winching requirements. Important -- Prior to ordering or quoting on any optional Bevel Gear Set be sure to check with factory on availability, and if the gear set would be recommended for the application.

GEAR SET NO.	BEVEL GEAR		BEVEL PINION		RATIO
	Part No.	Teeth	Part No.	Teeth	
52058-106	50828	43	50827	11	3.91/1
52058-101	50803	35	50802	9	3.89/1
52058-102	50806	35	50805	11	3.18/1
52058-103	50809	32	50808	13	2.46/1
52058-105	50825	29	50824	19	1.53/1

PSC BEVEL GEAR AND BEVEL PINION CARRIER ASSEMBLIES



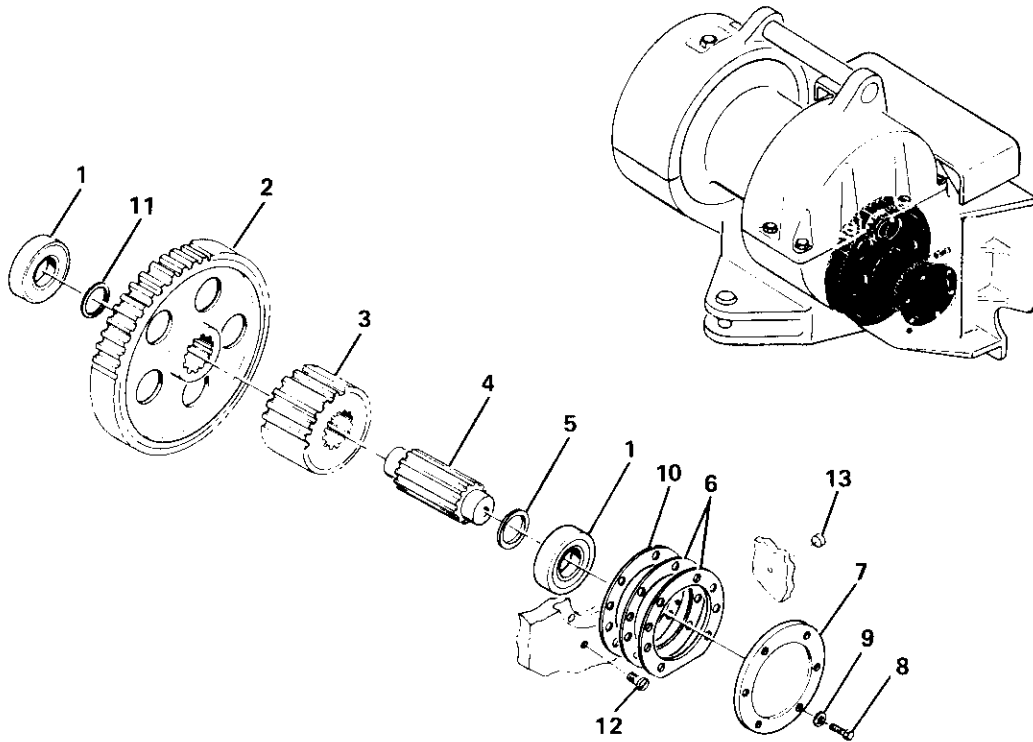
GEAR SET NO. 52058-106 RATIO 3.91/1

REF.	CARCO PART NO.	NAME AND DESCRIPTION	52058-011 QUAN. PER UNIT	52058-012 QUAN. PER UNIT
1	50828	Bevel Gear (43 Teeth)	1	1
2	50827	Bevel Pinion (11 Teeth)	1	1
3	15173	Tapered Roller Bearing Cup	1	1
	15175	Tapered Roller Bearing Cone	1	1
4	16237	Shim Set, TIMKEN 29	1	1
5	50914	Carrier (P.S. Winch)	1	Not Used
6	44297	Carrier (S.G. Winch)	Not Used	1
7	16064-8	Washer, 1/2	6	6
8	16047-810	Cap Screw, 1/2 UNC x 1-1/4 H.H.	6	6
9	16262-438	O-Ring, NAT'L. 622765	1	1
10	45084-5	Spacer	1	1
11	45088	Shim Set	1	1
12	15148	Tapered Roller Bearing Cup	1	1
	15149	Tapered Roller Bearing Cone	1	1
13	44348	Sleeve	1	1
14	16343-11	Oil Seal, NAT'L. 455079	2	2
15	16041-8	Lock Nut, TIMKEN N-08	2	2
16	51054	Pump Drive Pinion	1	Not Used

NOTE: The Bevel Gear Set above is standard for the adaption indicated. Below are optional gear combinations to provide a range of line speeds and pulls for various winching requirements. Important – Prior to ordering or quoting on any optional Bevel Gear Set be sure to check with factory on availability, and if the gear set would be recommended for the application.

GEAR SET NO.	BEVEL GEAR		BEVEL PINION		RATIO
	Part No.	Teeth	Part No.	Teeth	
52058-101	50803	35	50802	9	3.89/1
52058-102	50806	35	50805	11	3.18/1
52058-103	50809	32	50808	13	2.46/1
52058-104	50822	31	50821	16	1.94/1
52058-105	50825	29	50824	19	1.53/1

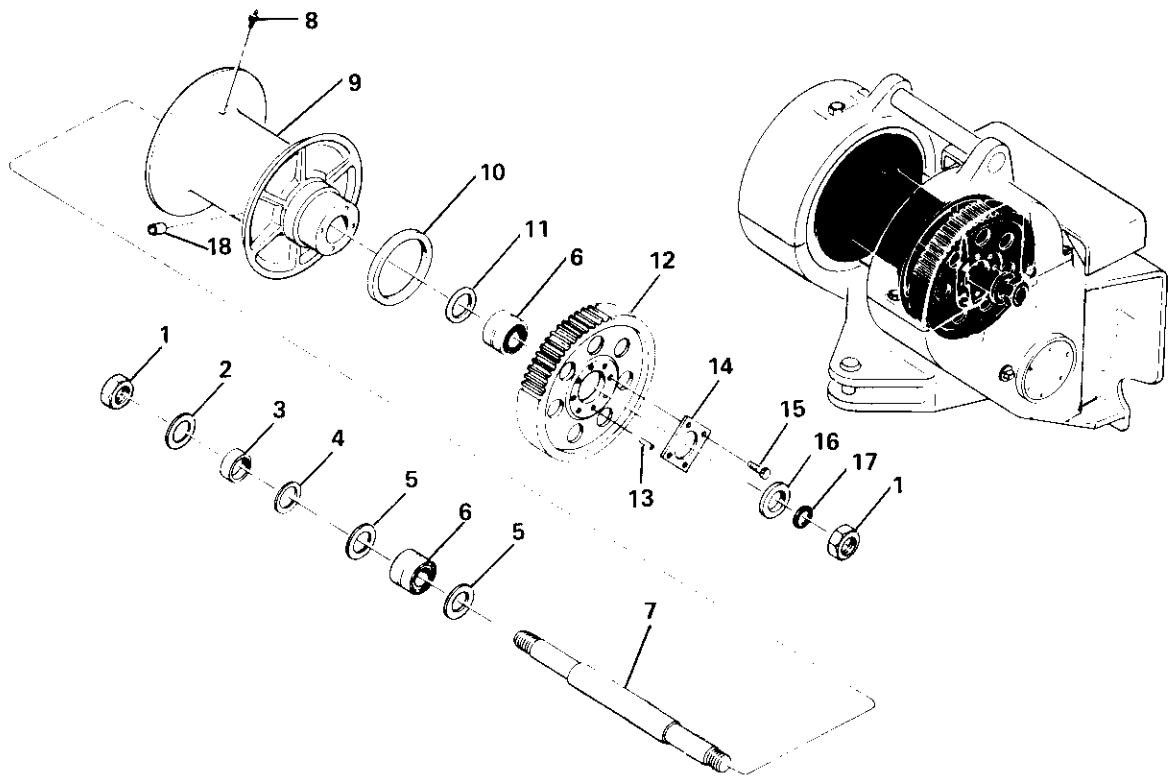
CARCO MODEL 60-PS, PSM & PSC WINCH
 PARTS LIST SECTION—PAGE 22
 IDLER SHAFT GROUP



IDLER SHAFT GROUP (NO FREE SPOOL) 52061-1

REF.	CARCO PART NO.	NAME AND DESCRIPTION	QUAN. PER UNIT
1	15296	Bearing, Roller	2
2	44468	Gear	1
3	44465	Pinion	1
4	48904	Shaft	1
5	44467	Spacer	1
6	44431	Shim Set	1
7	44464	Cover	1
8	16047-810	Cap Screw (1/2 UNC x 1-1/4 H.H.)	6
9	16064-8	Washer (1/2)	6
10	45028	Gasket	1
11	48906-1	Spacer	1
12	50475	Plug	1
13	16540-0001	Plug, Cup Expansion (1-1/8)	1

CARCO MODEL 60-PS, PSM & PSC WINCH
 PARTS LIST SECTION—PAGE 23
 CABLE DRUM GROUP (NO FREE SPOOL)



CABLE DRUM GROUP 52033

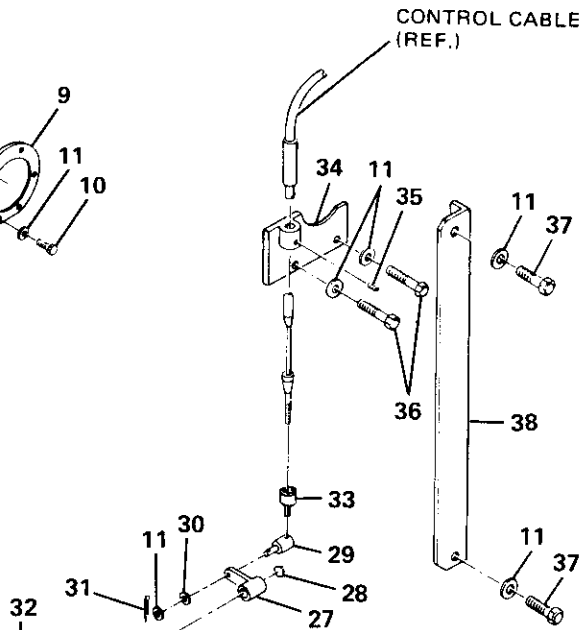
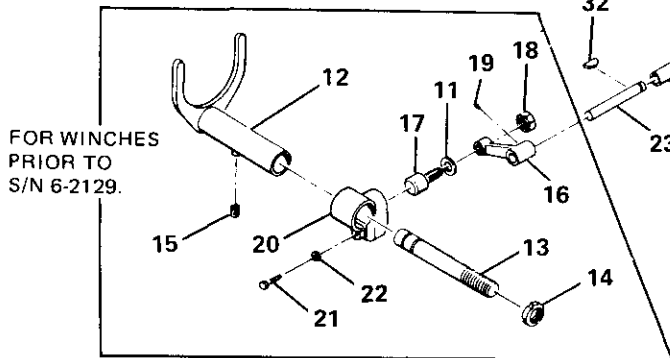
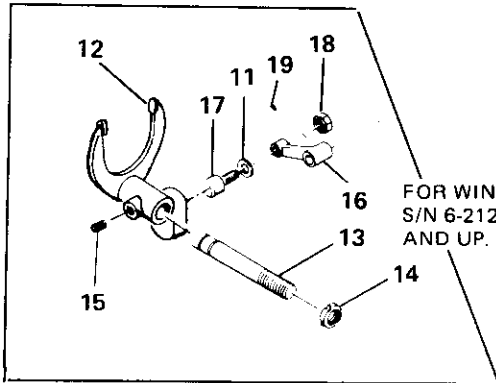
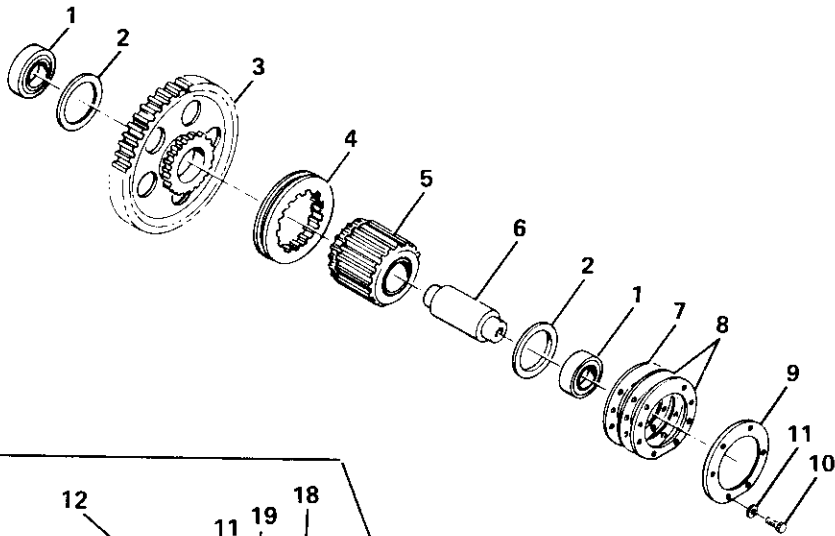
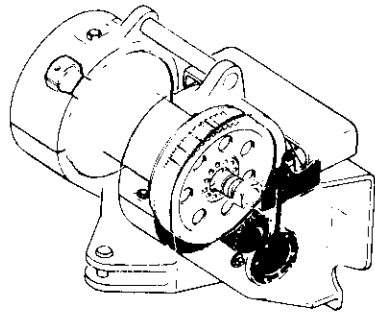
REF.	CARCO PART NO.	NAME AND DESCRIPTION	QUAN. PER UNIT
1	16044-40	Nut (2-1/2 UNF Hex Jam)	2
2	16343-21	Oil Seal (NAT'L. 455379)	1
3	44457-2	Spacer	1
4	44881	Shim	2
5	44458	Seal Washer	2
6	15200	Bearing Set	2
7	44459	** Shaft, Cable Drum	1
8	16222-2	Grease Fitting (ALEMITE 1610BL)	1
9	{ 44456 44682	Standard Drum (PS and PSM) High Capacity Drum (Standard on PSC)	1 1
10	16342-10	Oil Seal (NAT'L. 415300)	1
11	16343-16	Oil Seal (NAT'L. 455137)	1
12	44461	Gear	1
13	45081-2	* Dowel Pin	4
14	44469	Lock	1
15	16048-1218	Cap Screw (3/4 UNF x 2-1/4)	4
16	44460-2	Spacer	1
17	16262-332	O-Ring (NAT'L. 622735)	1
18	{ 25457-3 25457-2 25457-1	Ferrule (1") Ferrule (7/8") Ferrule (3/4")	1 1 1

NOTES:

*When bull gear or cable drum is replaced, dowel holes must be drilled 5/64" and reamed .9057"/.9077" to accommodate oversize 45081-2 dowels.

**For extended drum shaft order 46925 shaft and 2 each 10641-14 nut, Timken TN 14.

CARCO MODEL 60-PS, PSM & PSC WINCH
 PARTS LIST SECTION—PAGE 24
 FREE SPOOL IDLER SHAFT

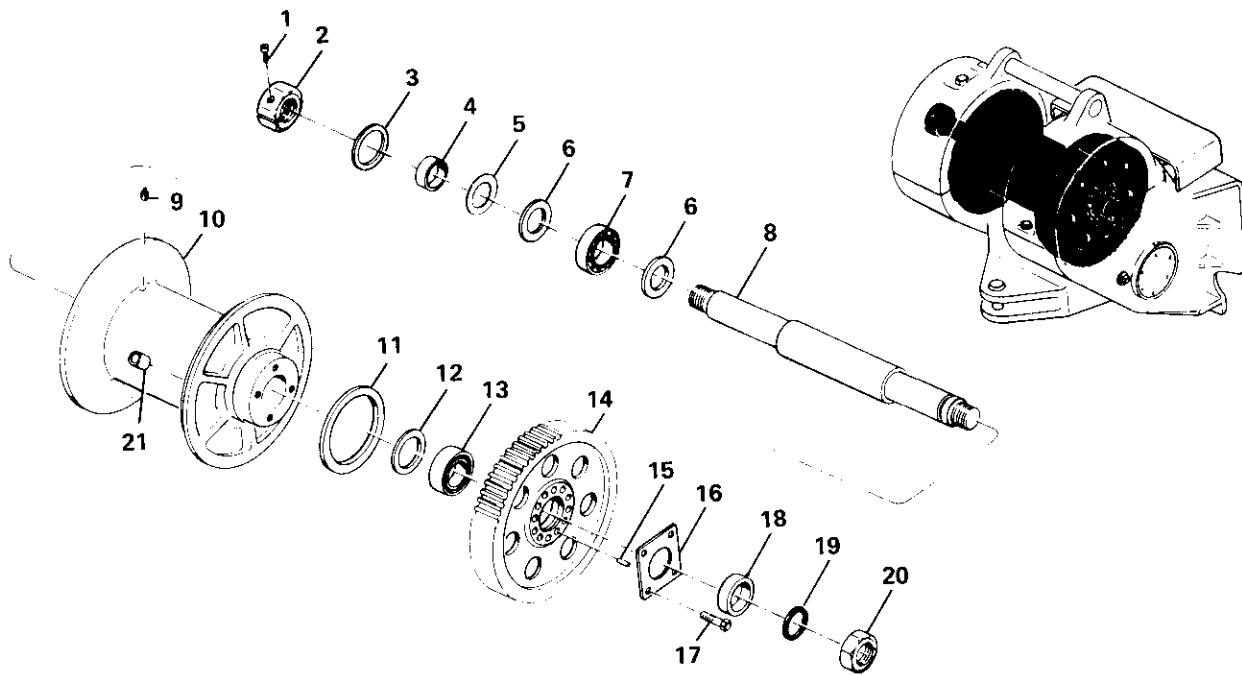


FREE SPOOL IDLER SHAFT GROUP 52062

CARCO MODEL 60-PS, PSM & PSC WINCH
PARTS LIST SECTION—PAGE 25
FREE SPOOL IDLER SHAFT

REF.	CARCO PART NO.	NAME AND DESCRIPTION	QUAN. PER UNIT
1	15296	Bearing	2
2	49953	Washer, Thrust	2
3	49954	Gear, Idler	1
4	49943	Coupling	1
5	53533-60	Pinion Assy, w/Bushing	1
6	49955	Shaft, Idler	1
7	45028	Gasket	1
8	44431	Shim Set	1
9	44464	Cover	1
10	16047-810	Cap Screw (1/2 UNC x 1-1/4)	6
11	16064-8	Washer (1/2)	10
12	{ 49944-50	Fork Assy, Shift (S.N. 6-2128 and below), Sub 53586 and 53458 (item 16)	1
	{ 53586	Fork Assy, Shift (S.N. 6-2129 and up)	1
13	49940-50	Guide	1
14	16041-6	Nut, Lock (TIMKEN TN-06)	1
15	16403-2	Ball Plunger	1
16	{ 49949	Lever, Shift (S.N. 6-2128 and below)	1
	{ 53458	Lever, Shift (S.N. 6-2129 and up)	1
17	16404-14	Cam Follower	1
18	16044-6	Nut (3/8 UNF Hex Jam)	1
19	16056-612	Set Screw (3/8 UNC x 3/4)	1
20	49947	Cam, Shift (S.N. 6-2128 and below)	1
21	16047-608	Cap Screw (3/8 UNC x 1) (S.N. 6-2128 and below)	1
22	16067-6	Washer, Lock (S.N. 6-2128 and below)	1
23	52439	Shaft, Shifter	1
24	16006-21	Bushing	2
25	16342-19	Oil Seal (NAT'L. 410791)	2
26	16064-10	Washer (5/8)	1
27	49941-50	Lever, Control	1
28	16313-62	Retaining Ring (TRUARC 5100-62)	1
29	49332	Pin, Cable	1
30	49333-1	Spring, Disc	1
31	16292-616	Pin, Spring (3/16 x 1)	1
32	16226-1	Key (WOODRUFF 5/32 x 5/8)	1
33	52399	Adapter, Cable	1
34	49952-11	Bracket	1
35	16056-606	Set Screw (3/8 UNC x 3/8)	2
36	16047-812	Cap Screw (1/2 UNC x 1-1/2)	2
37	16047-806	Cap Screw (1/2 UNC x 3/4)	1
38	49956	Guard, Cable	

CARCO MODEL 60-PS, PSM & PSC WINCH
 PARTS LIST SECTION—PAGE 26
 CABLE DRUM GROUP W/FREE SPOOL



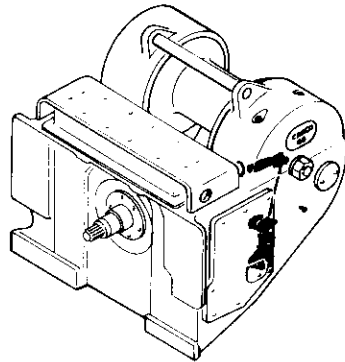
FREE SPOOL CABLE DRUM GROUP

REF.	CARCO PART NO.	NAME AND DESCRIPTION	QUAN. PER UNIT
1	16045-712	Screw, Self-Lock (7/16 UNF x 1-1/2 Hex. Soc. Hd.)	1
2	49957-40	Nut, Split	1
3	16343-21	Oil Seal (NAT'L. 455379)	1
4	44457-2	Spacer	1
5	44881	Shim	2
6	44458	Washer	2
7	15299	Bearing Set	1
8	44459	** Shaft, Cable Drum	1
9	16222-2	Grease Fitting (ALEMITE 1610 BL)	1
10	44456	Cable Drum, Standard	1
	44682	Cable Drum, High Capacity	1
11	16342-10	Oil Seal (NAT'L. 415300)	1
12	16343-16	Oil Seal (NAT'L. 455137)	1
13	15200	Bearing Set	1
14	44461	Gear, Cable Drum	1
15	45081-2	* Dowel Pin	4
16	44469	Lock Plate	1
17	16048-1218	Cap Screw (3/4 UNF x 2-1/4)	4
18	44460-2	Spacer	1
19	16262-332	O-Ring (NAT'L. 622735)	1
20	16044-40	Nut (2-1/2 UNF Hex Jam)	1
	25457-3	Ferrule (1)	1
21	25457-2	Ferrule (7/8)	1
	25457-1	Ferrule (3/4)	1

NOTES:

- *When bull gear or cable drum is replaced, dowel holes must be drilled 5/64" and reamed .9057"/.9077" to accommodate oversize 45081-2 dowels.
- **For extended drum shaft order 46925 shaft and 2 each 10641-14 nut, Timken TN 14.

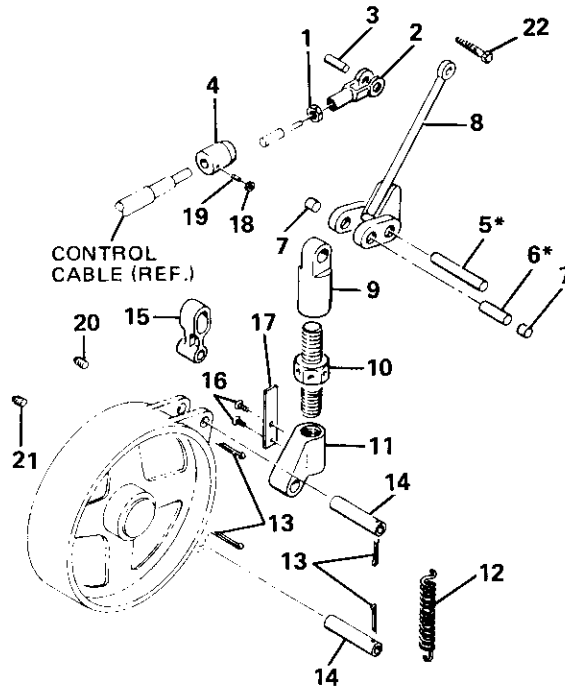
CARCO MODEL 60-PS, PSM & PSC WINCH
PARTS LIST SECTION—PAGE 27
BRAKE CONTROL (MANUAL)



NOTE:

*DIAGRAM SHOWS PINS (ITEMS 5 AND 6)
IN LOCATIONS FOR OVERWIND CABLE
DRUM OPERATIONS.

REVERSE LOCATION OF PINS (ITEMS
5 AND 6) WHEN CONVERTING WINCH
TO UNDERWOUND.

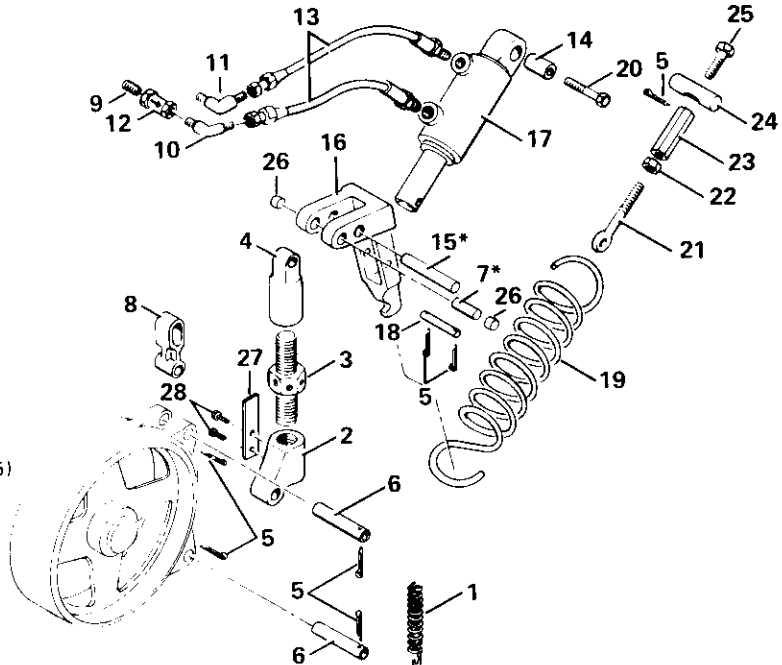
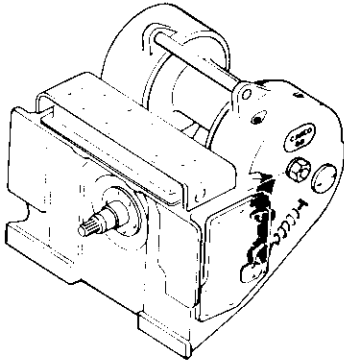


MANUAL BRAKE CONTROL GROUP NO. 52073

REF.	CARCO PART NO.	NAME AND DESCRIPTION	QUAN. PER UNIT
1	16044-6	Nut (3/8 UNF Hex Jam)	1
2	16245-6	Yoke (CLEVELAND 2708-4A)	1
3	16246-6	Pin (CLEVELAND 2708-1/2-4A)	1
4	45351-1	Anchor	1
5	44428	Pin	1
6	44429	Pin	1
7	44687-2	Spacer	2
8	44984	Arm	1
9	44426-1	Rod Nut	1
10	44423	Rod	1
11	44422-1	Rod Nut	1
12	44107	Spring	1
13	16288-420	Cotter Pin (1/8 x 1-1/4)	4
14	44421	Pin	2
15	44427	Link	1
16	16055-5	Drive Screw (#10 x 3/8 Type U)	2
17	44806	Spring	1
18	16043-6	Nut (3/8 UNC Hex Jam)	1
19	16056-612	Set Screw (3/8 UNC x 3/4 Hex Soc.)	1
20	16169-6	Plug (3/8 NPT Sq. Hd.)	1
21	16169-4	Plug (1/4 NPT Sq. Hd.)	1
22	16047-1232	Cap Screw (3/4 UNC x 4 H.H.)	1

NOTE: See pages 6 & 7 for control stand group.

CARCO MODEL 60-PS, PSM & PSC WINCH
 PARTS LIST SECTION—PAGE 28
 BRAKE CONTROL (SPRING APPLIED)



NOTE:

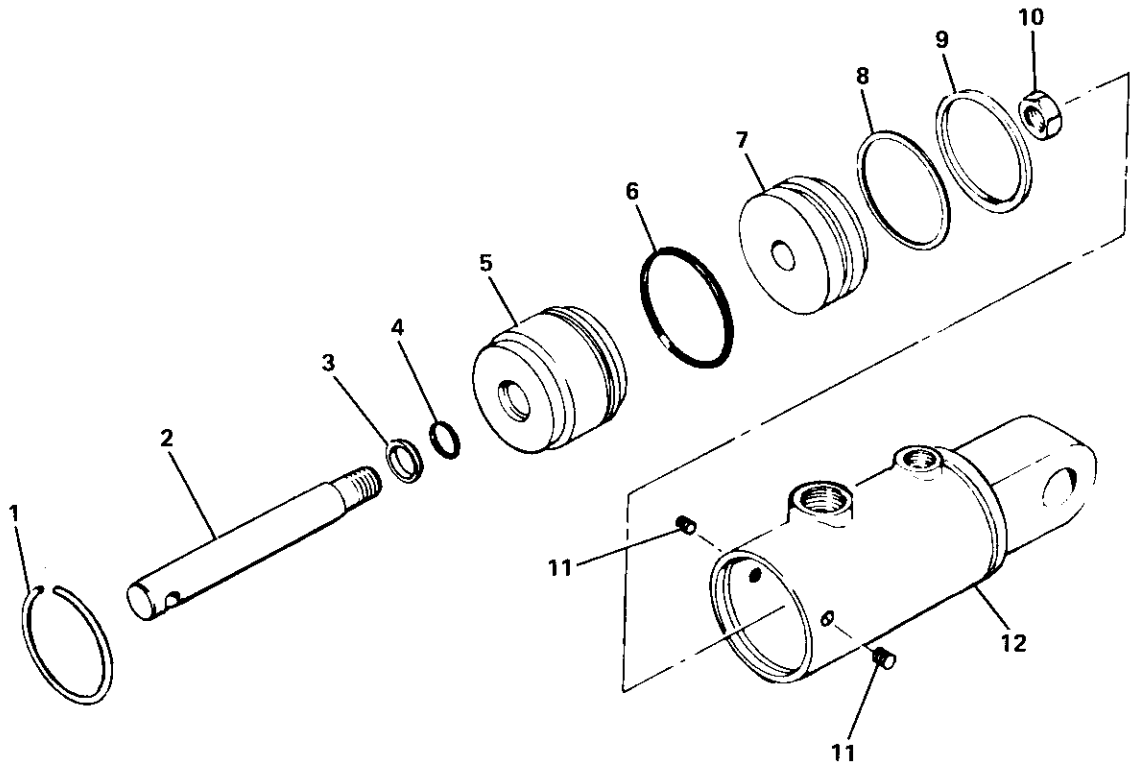
*DIAGRAM SHOWS PINS (ITEMS 7 AND 15) IN LOCATIONS FOR OVERWIND CABLE DRUM OPERATIONS.

REVERSE LOCATION OF PINS (ITEMS 7 AND 15) WHEN CHANGING WINCH TO UNDERWOUND.

P.S. BRAKE CONTROL GROUP (SPRING APPLIED) NO. 52072

REF.	CARCO PART NO.	NAME AND DESCRIPTION	QUAN. PER UNIT
1	44107	Spring	1
2	44422-1	Rod Nut	1
3	44423	Rod	1
4	44426-1	Rod Nut	1
5	16288-420	Cotter Pin (1/8 x 1-1/4)	7
6	44421	Pin	2
7	44429	Pin	1
8	44427	Link	1
9	16158-407	Nipple (1/4 NPT x 1)	1
10	16145-46	Elbow (WTHRD. C5405 x 6)	1
11	16145-66	Elbow (WTHRD. C5405 x 6 x 6)	1
12	51278	Flow Control Valve	1
13	44118-13	Hose	2
14	46077-1	Sleeve	1
15	44428	Pin	1
16	44437	Arm	1
17	51279	Cylinder (See Page 29)	1
18	44438	Pin	1
19	40155	Spring	1
20	16047-1232	Cap Screw (3/4 UNC x 4)	1
21	44206	Eye Bolt	1
22	16043-8	Nut (1/2 UNC Hex Jam)	1
23	40174	Nut	1
24	40175	Pin	1
25	42023	Screw	1
26	44687-2	Spacer	2
27	44806	Spring	1
28	16055-5	Drive Screw (#10 x 3/8)	2

NOTE: See pages 4 & 5 for control stand group.

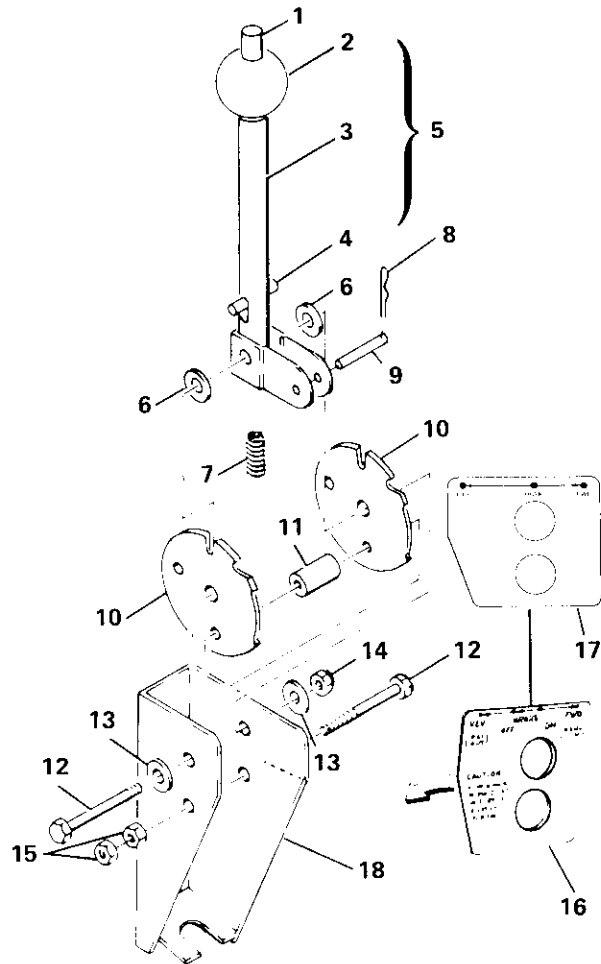


BRAKE CYLINDER ASSEMBLY

REF.	CARCO PART NO.	NAME AND DESCRIPTION	QUAN. PER UNIT
1	16280-6	Retaining Ring	1
2	16280-4	Rod, Piston	1
3	16280-7	Wiper	1
4	16262-214	O-Ring (NAT'L. 622719)	1
5	16280-2	Head	1
6	16262-228	O-Ring (NAT'L. 623006)	1
7	16280-15	Piston	1
8	16301-1	Washer, Back-up	1
9	16334-1	Seal (C/R 710087)	1
10	16280-5	Nut	1
11	16054-404	Set Screw (1/4 UNC x 1/4)	2
12	NSS	Tube Assy (Order 51279 Brake Cylinder)	1
---	46241	Repair Kit, Seal (Consists of Items 3, 4, 6, 8, 9)	1
---	51279	Brake Cylinder Assembly	1

CARCO MODEL 60-PS, PSM & PSC WINCH
 PARTS LIST SECTION—PAGE 30
 POWERSHIFT CONTROL STAND

CONTROL STAND (POWERSHIFT)
 49001-01 THROUGH 49001-08*
 CONTROL STAND
 (POWER SHIFT W/MANUAL BRAKE)
 53598-01 THROUGH 53598-08*



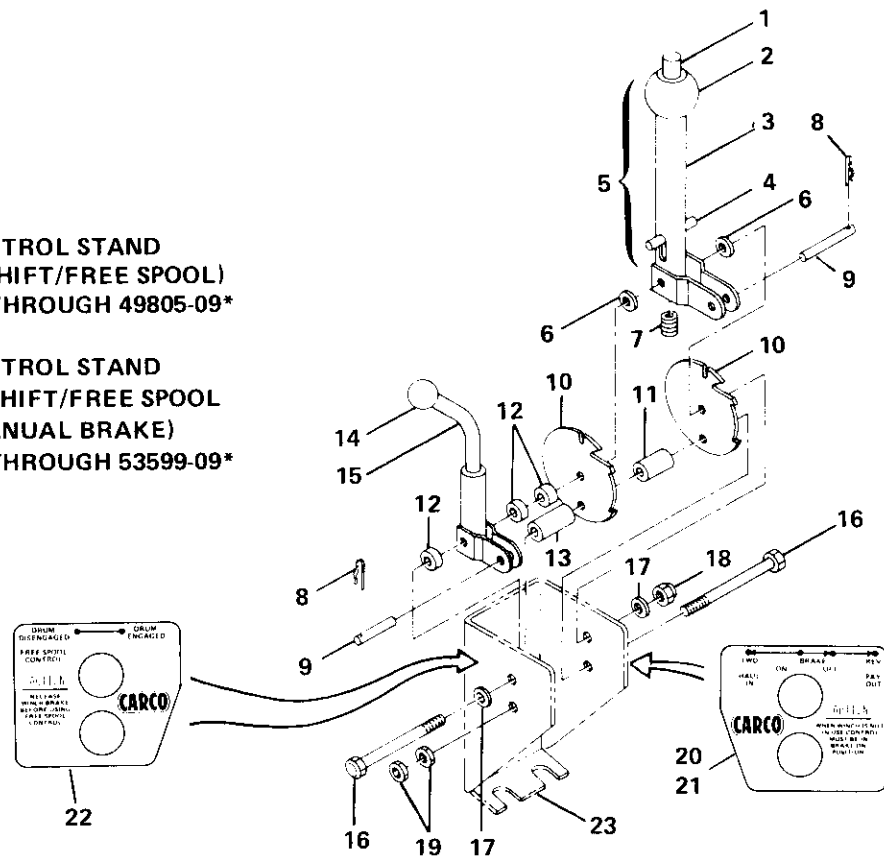
REF.	CARCO PART NO.	NAME AND DESCRIPTION	QUAN. PER UNIT
1	49004	Push Rod	1
2	41404	Ball	1
3	49005	Handle	1
4	16294-824	Pin, Spring (1/4 x 1-1/2)	1
5	49003	Lever Assy (Consists of Items 1, 2, 3, 4)	1
6	16009-6	Bearing, Thrust (BUNTING TW-37)	2
7	41403	Spring	1
8	16381-13	Pin, Hitch	1
9	49010	Pin	1
10	49007	Plate, Lock	2
11	49804-3	Spacer	1
12	16047-620	Cap Screw (3/8 UNC x 2-1/2)	2
13	16064-6	Washer (3/8)	2
14	16039-66	Nut, Lock (3/8)	1
15	16033-6	Nut (3/8 Hex)	2
16	49314	Plate, Instruction, Powershift	1
17	53362-2	Plate, Instruction, Powershift w/Manual Brake	1
18	NSS	* Housing, Powershift (Order Control Stand Assembly)	1

*Refer to Control Group, pages 4 and 6 for part number of complete Control Stand Assembly.

CARCO MODEL 60-PS, PSM & PSC WINCH
PARTS LIST SECTION—PAGE 31
POWERSHIFT W/FREE SPOOL CONTROL STAND

**CONTROL STAND
(POWERSHIFT/FREE SPOOL)
49805-01 THROUGH 49805-09***

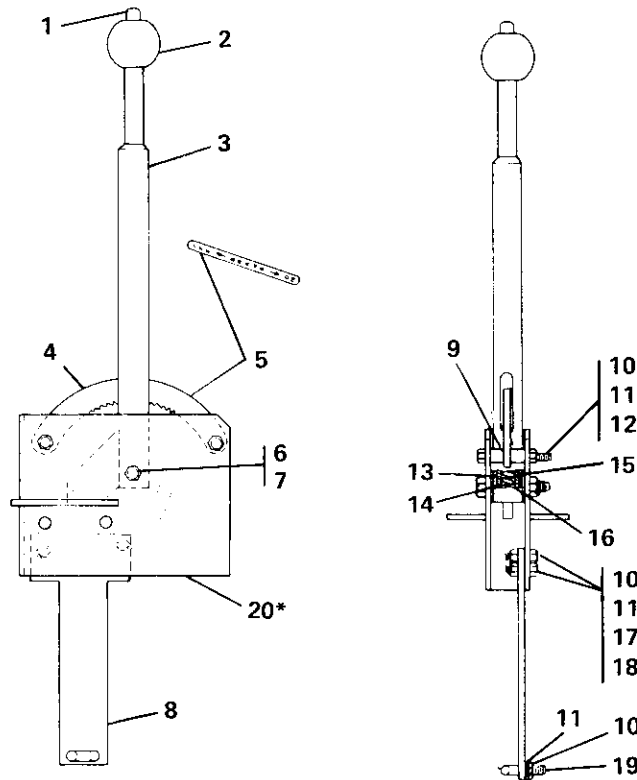
**CONTROL STAND
(POWERSHIFT/FREE SPOOL
W/MANUAL BRAKE)
53599-01 THROUGH 53599-09***



REF.	CARCO PART NO.	NAME AND DESCRIPTION	QUAN. PER UNIT
1	49004	Push Rod	1
2	41404	Ball	1
3	49005	Handle	1
4	16294-824	Pin, Spring (1/4 x 1-1/2)	1
5	49003	Lever Assy (Consists of Items 1, 2, 3, 4)	1
6	16009-6	Bearing, Thrust (BUNTING TW-37)	2
7	41403	Spring	1
8	16381-13	Pin, Hitch	2
9	49010	Pin	2
10	49007	Plate, Lock	2
11	49804-3	Spacer	1
12	49804-2	Spacer	3
13	49804-1	Spacer	1
14	16236-4	Knob	1
15	49802-1	Lever Assy, Free Spool	1
16	16047-632	Cap Screw (3/8 UNC x 4)	2
17	16064-6	Washer (3/8)	2
18	16039-66	Lock Nut (3/8)	1
19	16033-6	Nut (3/8 Hex)	2
20	49314	Plate, Instruction, Powershift	1
21	53362-2	Plate, Instruction, Powershift w/Manual Brake	1
22	49807-2	Plate, Instruction, Free Spool	1
23	NSS	* Housing, Powershift w/Free Spool (Order Control Stand Assembly)	

*Refer to Control Group, pages 5 and 7 for part number of complete Control Stand Assembly.

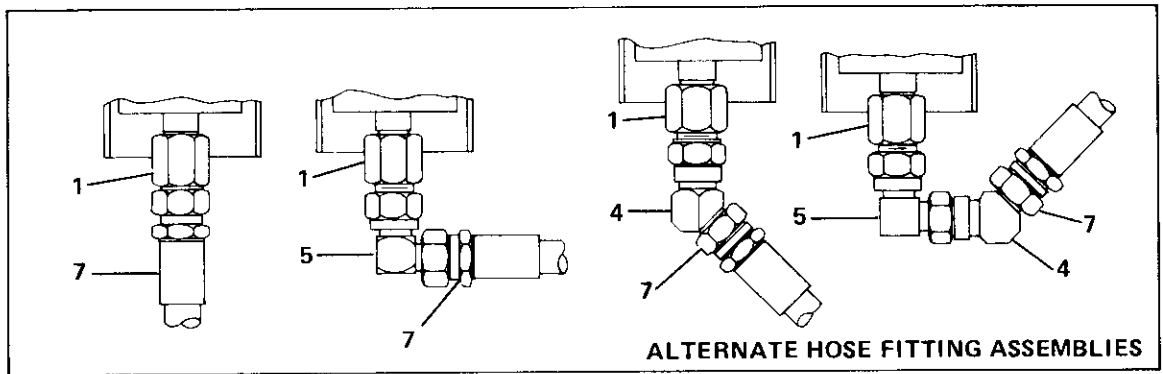
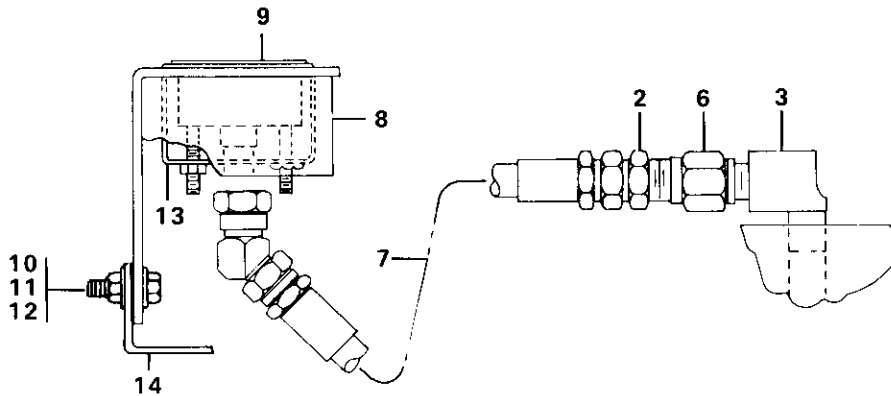
CARCO MODEL 60-PS, PSM & PSC WINCH
 PARTS LIST SECTION—PAGE 32
 MANUAL BRAKE CONTROL STAND



MANUAL BRAKE CONTROL STAND ASSEMBLY NO. 49434*

REF.	CARCO PART NO.	NAME AND DESCRIPTION	QUAN. PER UNIT
1	50629	Rod	1
2	41404	Ball	1
3	49435	Handle	1
4	50627	Sector	1
5	49446	Plate, Instruction	1
6	16039-83	Nut, Lock	1
7	16047-818	Cap Screw (1/2 UNC x 2-1/4)	1
8	50099	Arm	1
9	49438	Spacer	4
10	16033-6	Nut (3/8)	6
11	16067-6	Washer, Lock (3/8)	6
12	16047-620	Cap Screw (3/8 UNC x 2-1/2)	2
13	49437	Bushing	1
14	49436	Washer	2
15	49445	Spring	1
16	16064-3	Washer, Plain	1
17	16047-608	Cap Screw (3/8 UNC x 1)	2
18	16064-6	Washer, Plain	2
19	16398-4	U-Bolt (3/8)	1
20	NSS	* Housing (Order complete Control Stand Assembly)	

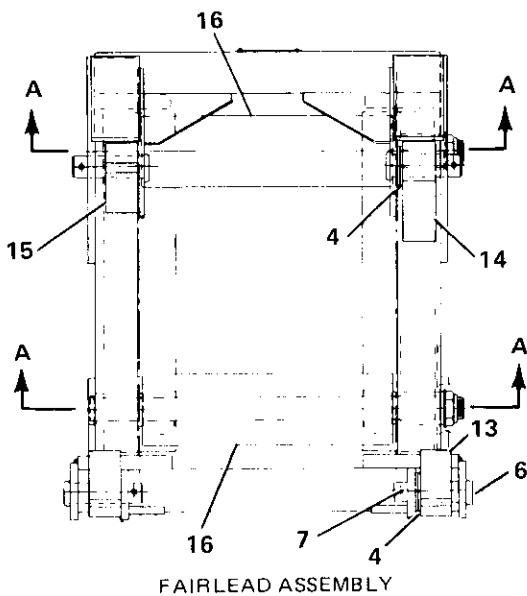
*Refer to Control Group, pages 6 and 7 for part number of complete Control Stand Assembly.



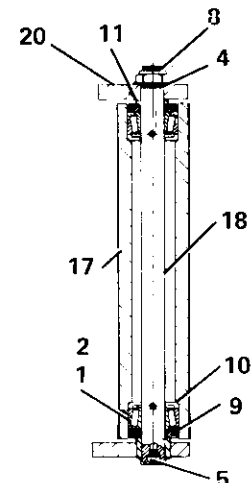
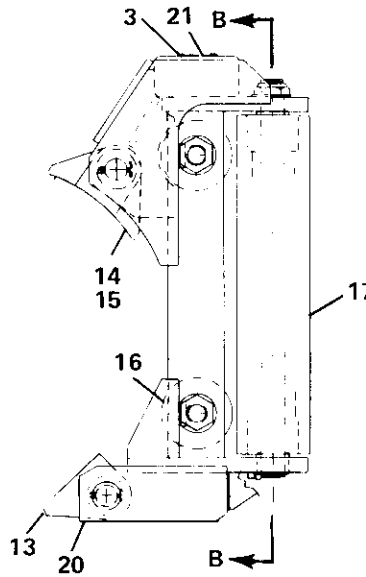
REF.	CARCO PART NO.	NAME AND DESCRIPTION	KIT NUMBER		
			48944-120	48700-120	51480-1
			QUAN. PER UNIT	QUAN. PER UNIT	QUAN. PER UNIT
1	16116-44	Adapter (WTHRD. C5255 x 4 x 4)	1	1	1
2	16129-44	* Connector (WTHRD. C5205 x 4 x 4)	1	1	1
3	16171-44	* Elbow (WTHRD. 3400 x 4)	1	1	1
4	16184-44	Union (WTHRD. C5356 x 4)	1	1	—
5	16185-44	Union (WTHRD. C5506 x 4)	1	1	—
6	16362-44	* Snubber (CHEMIQUIP 25B-D)	1	1	1
7	44921-120	Hose Assembly	1	1	1
8	48687	Bracket	1	1	—
9	48693-1	Gauge	1	1	1
10	16047-608	Screw, Hex Hd Cap (3/8 x 1 UNC)	1	—	—
11	16033-6	Nut, Hex (3/8 UNC)	1	—	—
12	16063-6	Washer (3/8)	1	—	—
13	16385	Bracket	1	1	1
14	49343-2	Bracket	1	—	—

*Items 2, 3, and 6 are also shown in hydraulic control section.

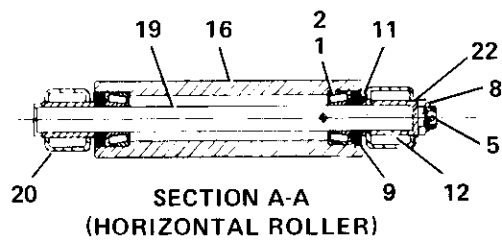
CARCO MODEL 60-PS, PSM & PSC WINCH
 PARTS LIST SECTION—PAGE 34
 FAIRLEAD



FAIRLEAD ASSEMBLY



SECTION B-B
(VERTICAL ROLLER)



SECTION A-A
(HORIZONTAL ROLLER)

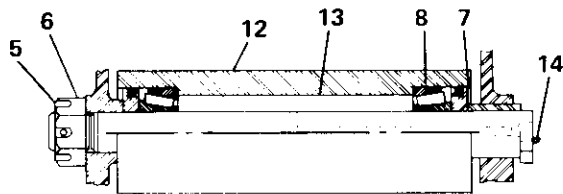
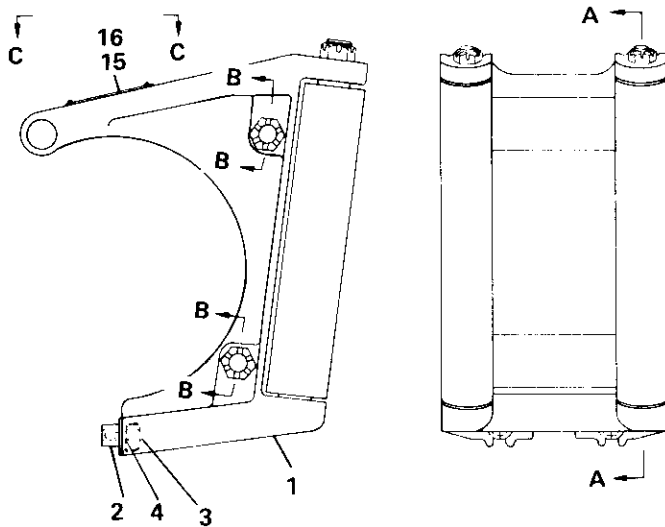
NOTE: THIS FAIRLEAD IS NORMALLY FURNISHED AS A 3-ROLLER UNIT, WITH HORIZONTAL ROLLER IN TOP POSITION — IF A 4-ROLLER UNIT IS REQUIRED, AN ADDITIONAL ROLLER CAN BE SUPPLIED CONSISTING OF ITEMS LISTED IN COLUMN "A" IN PARTS LIST.

FAIRLEAD — PART NO. 53289-030 (3 ROLLER)
 53289-040 (4 ROLLER)

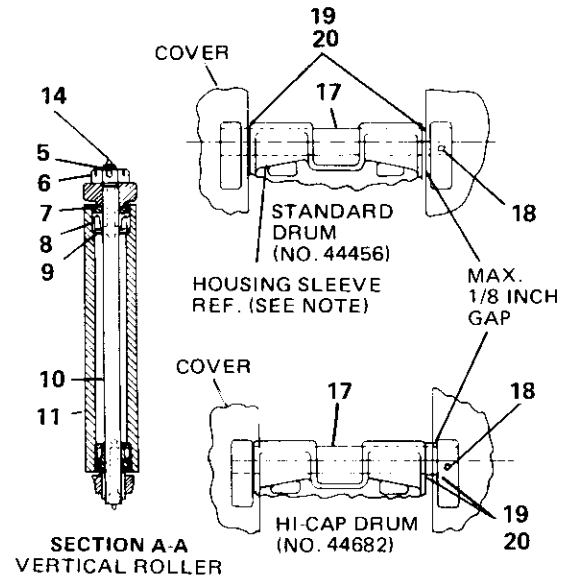
REF.	CARCO PART NO.	NAME AND DESCRIPTION	QUAN. PER UNIT	"A"
1	15178	Cone	6	2
2	15235	Cup	6	2
3	16055-5	Screw, Tapping (#10 x 3/8 Type U)	4	
4	16064-24	Washer, Plain (1-1/2)	6	
5	16222-2	Fitting, Grease (ALEMITE 1606B)	5	1
6	16287-6	Pin, Clevis (1-1/2 x 5)	4	
7	16288-832	Pin, Cotter (1/4 x 2)	4	
8	16533-24	Nut, Lock (ESNA 52NTE-242)	3	1
9	30044	Guard Assembly, Dust	6	2
10	30045	Retainer, Grease	4	
11	53281-0001	Spacer	3	1
12	53281-0002	Spacer	1	1
13	53282-1	Lug, Lower	2	
14	53282-2	Lug, Brake Side, LH	1	
15	53282-3	Lug, Gear Side, RH	1	
16	53283-0001	Roller	1	1
17	53283-0002	Roller	2	
18	53284-1	Shaft, Vert.	2	
19	53285-1	Shaft, Horiz.	1	1
20	53288	Frame	1	
21	53449	Plate, Name	1	
22	53255-01	Washer, Special	1	1

CARCO MODEL 60-PS, PSM & PSC WINCH
PARTS LIST SECTION—PAGE 35
FAIRLEAD

THIS FAIRLEAD IS NORMALLY FURNISHED AS A 3-ROLLER UNIT, WITH HORIZONTAL ROLLER IN TOP POSITION — IF A 4-ROLLER UNIT IS REQUIRED, AN ADDITIONAL ROLLER CAN BE SUPPLIED CONSISTING OF ITEMS LISTED IN COLUMN "A" IN PARTS LIST.



SECTION B-B
HORIZONTAL ROLLER



SECTION A-A
VERTICAL ROLLER

SECTION C-C

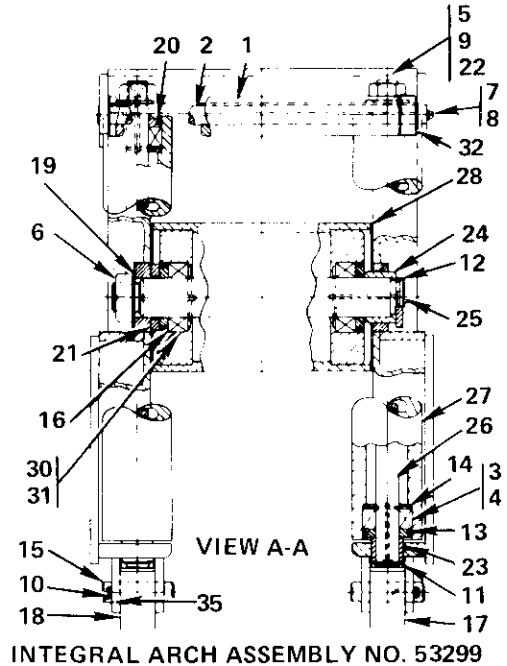
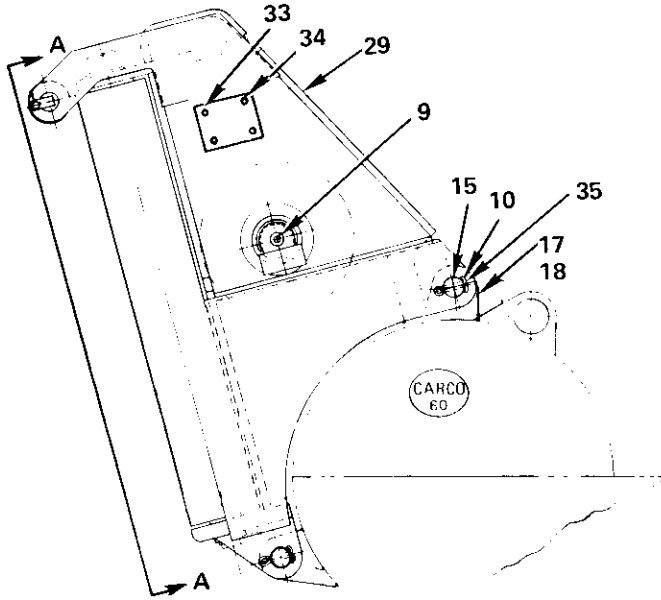
NOTE: AT INSTALLATION, POSITION HOUSING (ITEM 1) SO IT IS CENTERED AS NEARLY AS POSSIBLE ON CABLE DRUM. BURN END OF HOUSING SLEEVE IF NECESSARY, INSTALL ITEMS 19 AND 20 AS REQUIRED TO MAKE MAXIMUM GAP OF 1/8" BETWEEN SPACERS AND WINCH COVER.

FAIRLEAD — PART NO. 44280-30 (3 ROLLER) — 44280-40 (4 ROLLER)

REF.	CARCO PART NO.	NAME AND DESCRIPTION	QUAN. PER UNIT	"A"
1	44368	Housing	1	
2	42184	* Attaching Lug	2	
3	16047-2018	Cap Screw (1-1/4 UNC x 2-1/4 H.H.)	2	
4	16063-20	Washer	2	
5	16288-1240	Cotter Pin (3/8 x 2-1/2)	3	1
6	16036-24	Nut (TIMKEN K8111)	3	1
7	30044	Dust Guard	6	2
8	{ 15235	Bearing Cup	6	2
	{ 15178	Bearing Cone	6	2
9	30045	Retainer	4	
10	30252	Shaft	2	
11	30250	Roller	2	
12	33958	Roller	1	1
13	44371	Shaft	1	1
14	16222-2	Fitting (ALEMITE 1610B)	5	1
15	26248	Name Plate	1	
16	16055-5	Drive Screw (#10 x 3/8 Type U)	4	
17	49043-1	Cable Guard	1	
18	16288-1272	Cotter Pin (3/8 x 4-1/2)	1	
19	49879-1	Spacer	2	
20	49879-2	Spacer	2	

*Welds to Winch Case.

CARCO MODEL 60-PS, PSM & PSC WINCH
 PARTS LIST SECTION—PAGE 36
 FAIRLEAD



INTEGRAL ARCH ASSEMBLY NO. 53299

REF.	CARCO PART NO.	NAME AND DESCRIPTION	QUAN. PER UNIT
1	P50078	Roller w/Bushing	1
2	P50080	Shaft, Roller	1
3	15178	Cone	4
4	15235	Cup	4
5	16044-24	Nut (1-1/2 UNF Hex Jam)	2
6	16044-36	Nut (2-1/4 UNF Hex Jam)	1
7	16047-504	Cap Screw (5/16 UNC x 1/2 H.H.)	1
8	16067-5	Washer, Lock (5/16)	1
9	16222-2	Fitting, Grease (ALEMITE 16108)	6
10	16288-832	Pin, Cotter (1/4 x 2)	4
11	16311-257	Ring, Retaining (NAT'L. XSO-257 Ext.)	2
12	16311-264	Ring, Retaining (NAT'L. XSO-264 Ext.)	1
13	30044	Guard, Dust	4
14	30045	Retainer, Grease	4
15	16287-6	Pin, Clevis (LEITZKE, 1-1/2 x 4-1/4)	4
16	53294	Guard, Dust	2
17	53292-1	Lug, Gear Side, LH	3
18	53292-2	Lug, Brake Side, RH	1
19	53293-01	Washer	1
20	53293-02	Spacer	2
21	53293-03	Spacer	1
22	53293-04	Washer	2
23	53293-07	Spacer	2
24	53293-10	Spacer	1
25	53295-1	Shaft, Horizontal	1
26	53295-2	Shaft, Vertical	2
27	30705	Roller, Vertical	2
28	53297	Roller, Horizontal	1
29	53298	Frame	1
30	15325	Cup	2
31	15326	Cone	2
32	P50081	Bushing	2
33	53449	Plate, Name	1
34	16055-5	Screw (#10 x 3/8 Type U)	4
35	16064-24	Washer (1-1/2)	4

CAUTION: Mounting fasteners may change when installing arch to winch and tractor.
 Refer to winch arch mounting group page for fasteners.