

CARCO®

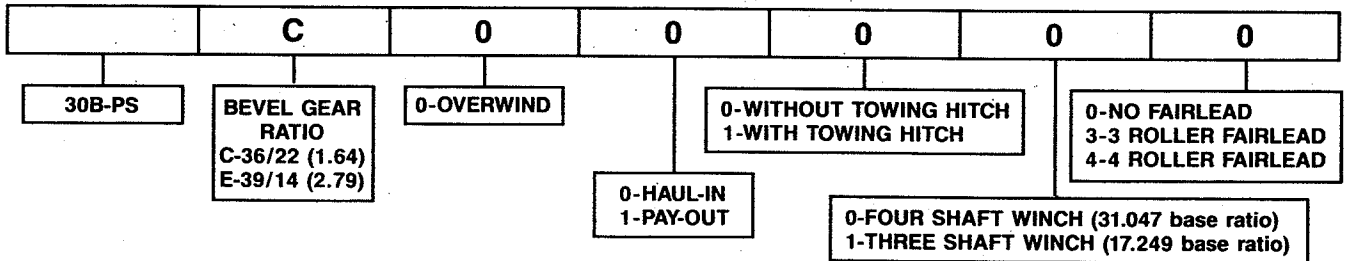
PARTS MANUAL MODEL 30B-PS WINCH FOR

CATERPILLAR D3C, D4C & D5C HYSTAT TRACTORS

TABLE OF CONTENTS

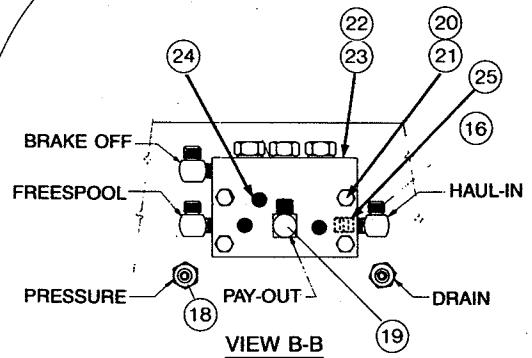
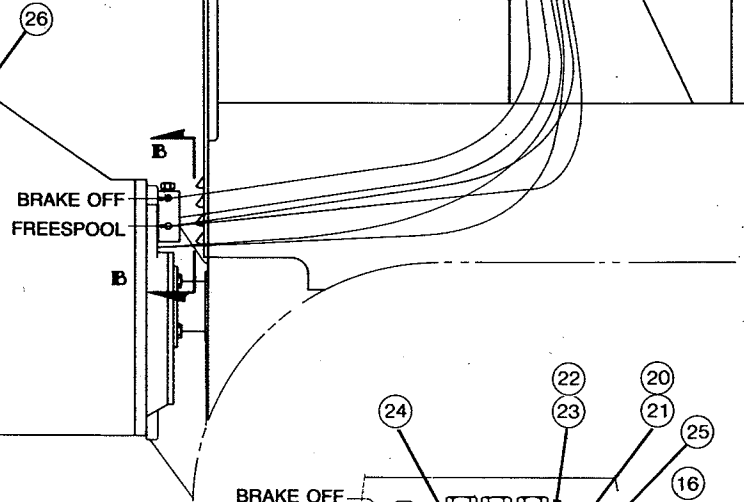
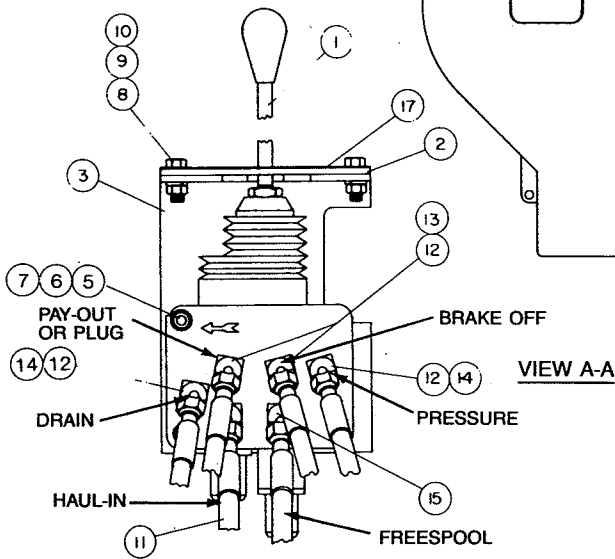
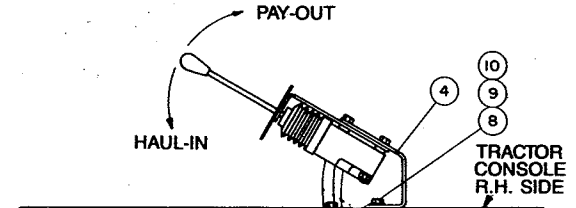
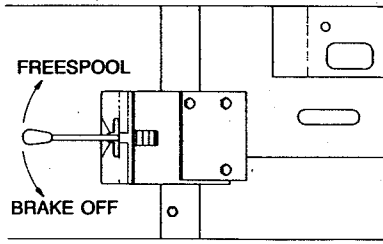
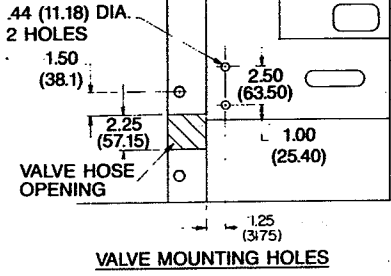
	PAGE
Hydraulic Control Group	2-3
Mounting Group	4
PTO Adapter Group	5
Adapter Assembly	6-7
Clutch Assembly	8
Pump and Accumulator	9
Hydraulic Group	10-11
Drum Group	12-13
Fairlead Assembly and Drawbar	14
Brake and Clutch Hydraulic Tube Assemblies	15
Cluster Gear Assembly (4-Shaft Winch)	16

MODEL NUMBER DESCRIPTION



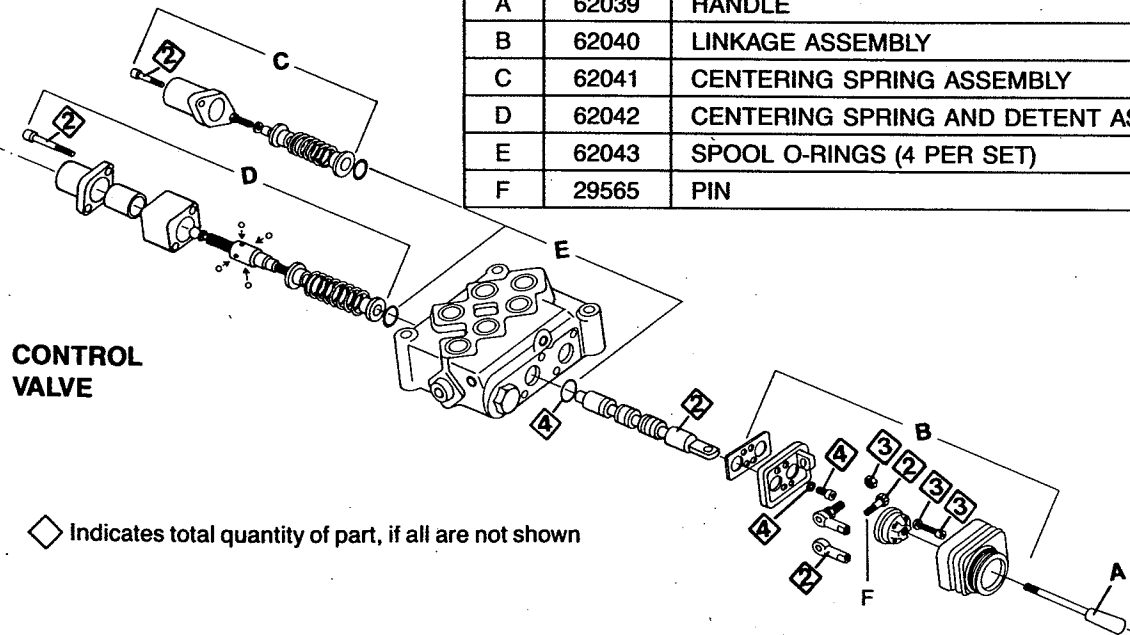
PACCAR WINCH DIVISIONS

**MODEL 30B PS
CONTROL GROUP**



CONTROL VALVE

ITEM	PART NO.	DESCRIPTION	QTY.
1	26214	VALVE	1
A	62039	HANDLE	1
B	62040	LINKAGE ASSEMBLY	1
C	62041	CENTERING SPRING ASSEMBLY	1
D	62042	CENTERING SPRING AND DETENT ASSEMBLY	1
E	62043	SPOOL O-RINGS (4 PER SET)	1
F	29565	PIN	2



CONTROL INSTALLATION INSTRUCTIONS

NOTE: These instructions are provided as a general guide. Tractor options, application requirements or local regulations may require deviation from these recommendations.

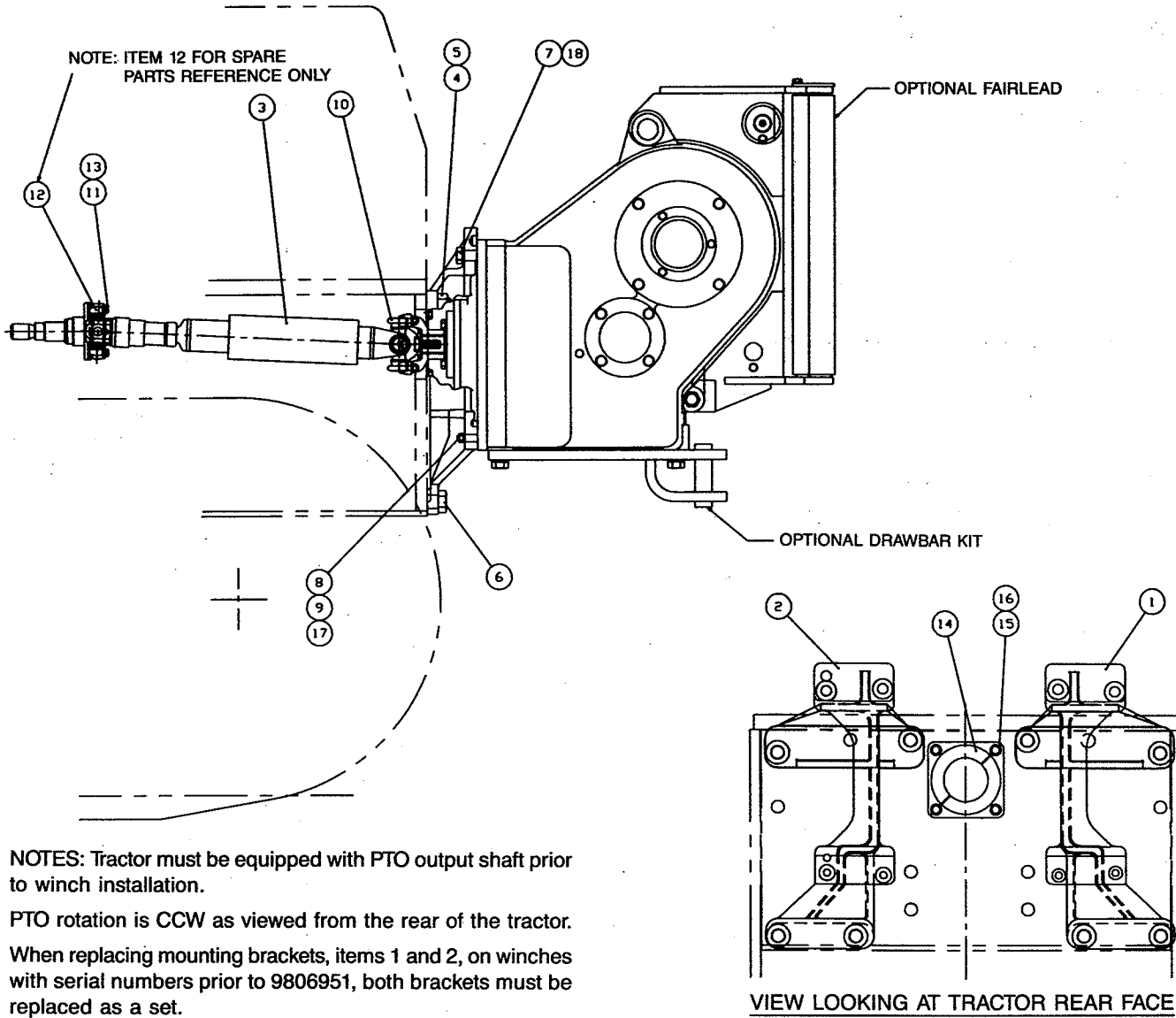
1. Modify tractor right hand console and rear panel as shown.
2. Attach hoses (6 with payout, 5 without), item 11, to control valve, item 1, with adapters/elbows, items 12, 13, 14 and 15. Use view A-A for location of various adapters/elbows. Mark the end of each hose with masking tape and pen for port location; use valve plumbing diagram to determine port location.
3. Carefully route hoses from tractor RH console to tractor rear face. Route hoses to clear back-up alarm, battery, and other tractor control mechanisms.
4. Mount bracket, item 4, to tractor console with fasteners, items 8, 9 and 10; torque to 31 lb•ft (42 N•m).
5. Attach control valve, item 1, to bracket, item 4, with fasteners, items 5, 6 and 7. Torque to 18 lb•ft (24 N•m).
6. Attach gater plate, item 2, and control placard, item 17, to bracket, item 3, with fasteners, items 8, 9 and 10; torque to 31 lb•ft (42 N•m).
7. Install elbows, items 16 and 19 and test port plugs, item 24, on shuttle valve body, item 22. Install shuttle valve, item 22, onto winch with o-rings, item 23, and fasteners, items 20 and 21. Torque to 31 lb•ft (42 N•m). Install pressure and drain adapters, item 18, into winch.

Note that 90° elbow, item 19, contains an orifice. Insure that it is installed in the correct location, as illustrated.

ITEM	DESCRIPTION	W/HAUL-IN ONLY		W/PAY-OUT	
		PART NO.	QTY.	PART NO.	QTY.
1	CONTROL VALVE	26214	1	26214	1
2	GATER PLATE	26409	1	26410	1
3	VALVE BRACKET	26833	1	26833	1
4	MOUNTING BRACKET	27102	1	27102	1
5	CAPSCREW (5/16-18 × 2 3/4 G5, HEX)	27148	3	27148	3
6	WASHER (5/16)	69640	3	69640	3
7	HEX NUT (5/16-18 G2)	69644	3	69644	3
8	CAPSCREW (3/8-16 × 1 G5, HEX)	27151	4	27151	4
9	LOCKWASHER (3/8)	27152	4	27152	4
10	HEX NUT (3/8-16 G5)	27153	4	27153	4
11	HOSE ASSEMBLY - 72"	27627	5	27627	6
12	ELBOW, 45°	27149	3	27149	4
13	ADAPTER STRAIGHT	79099	1	79099	2
14	ADAPTER STRAIGHT	26891	2	26891	2
15	ELBOW, 45°	25868	2	25868	2
16	ELBOW, 90°	31342	3	31342	3
17	CONTROL PLACARD	26609	1	26605	1
18	ADAPTER, STRAIGHT	31307	2	31307	2
19	ELBOW, 90° W/ORIFICE	—	—	27746	1
20	CAPSCREW (3/8-16 × 2 G5, HEX)	22704	4	22704	4
21	WASHER (3/8)	13929	4	13929	4
22	MANIFOLD BLOCK	27517	1	27518	1
22A	SHUTTLE VALVE SEAL KIT	29874	2	29874	3
23	O-RING, MANIFOLD TO CASE	72097	3	72097	4
24	PLUG (1/8 NPT)	22374	3	22374	3
25	ORIFICE PLUG	27748	1	27748	1
26	RATING DECAL	100098	1	100098	1

NOTE: On winches with haul-in only, a plug (part number 26686), is used in the pay-out port of the control valve.

**MODEL 30B PS
MOUNTING GROUP**



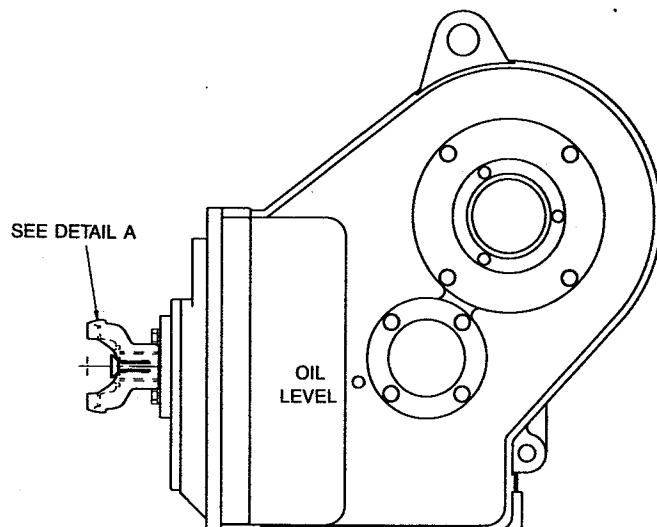
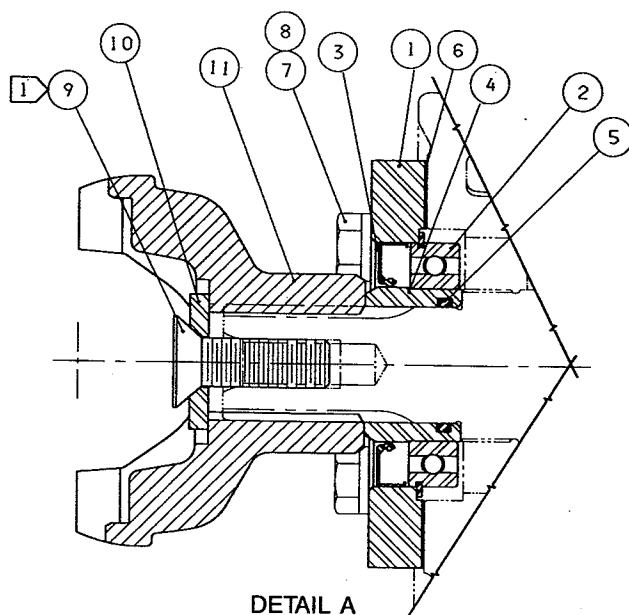
NOTES: Tractor must be equipped with PTO output shaft prior to winch installation.

PTO rotation is CCW as viewed from the rear of the tractor.

When replacing mounting brackets, items 1 and 2, on winches with serial numbers prior to 9806951, both brackets must be replaced as a set.

ITEM	PART NO.	DESCRIPTION	QTY.
1	101691	LH MOUNTING BRACKET	1
2	101692	RH MOUNTING BRACKET	1
3	101989	DRIVESHAFT	1
4	26827	STUD	4
5	22887	HEX NUT (1 - 8 UNC HEAVY)	4
6	70838	CAPSCREW, HEX HEAD (1 - 8 NC x 2 GD 8)	4
7	26370	CAPSCREW, HEX HEAD (3/4 - 10 NC x 2 3/4 GD 8)	4
8	102245	STUD	4
9	100859	WASHER, HARDENED	4
10	69030	U-BOLT KIT	1
11	101103	CAPSCREW, METRIC	4
13	11024	LOCKWASHER (5/16)	4
14	101101	COVER PLATE HALF	2
15	32318	CAPSCREW, METRIC	4
16	13423	WASHER, (7/16) NARROW	4
17	11788	HEX NUT (1/2 - 13 UNC)	4
18	100856	WASHER, HARDENED	4
	101337	U-JOINT, WINCH END	
	101192	U-JOINT, TRACTOR END	

**MODEL 30B PS
PTO ADAPTER GROUP**



ITEM	PART NO.	DESCRIPTION	QTY.
1	26133	PTO PILOT	1
2	72251	BEARING	1
3	26165	SEAL	1
4	26128	SLEEVE	1
5	13838	O-RING	1
6	26169	GASKET	1
7	13938	CAPSCREW (1/2 - 13 NC x 1 1/4 GD5)	4
8	11026	LOCKWASHER (1/2)	4
9	25491	CAPSCREW	1
10	100984	RETAINER	1
11	100981	END YOKE	1

INSTALLATION INSTRUCTIONS (PAGE 4)

1. Remove tractor PTO cover.
2. Remove paint, rust, dirt, and grease from tractor rear mounting surfaces, winch, and mounting bracket pads.
3. Install studs, item 4, into tractor upper mounting holes with Loctite 271 or equivalent.
4. Install mounting brackets, items 1 & 2, to winch using fasteners, items 7, 8, 9 and 17. Apply Loctite 242 to threads and torque 3/4 bolts to 265 lb-ft (359 N•m) and 1/2 in. bolts to 75 lb-ft (102 N•m).
5. Install driveshaft, item 3, to winch yoke with u-bolt kit, item 10. Apply Loctite 242 and torque to 23 lb-ft (31 N•m).

⚠ WARNING

Winch weighs approximately 1000 lb (454 kg) without oil, cable or tractor adapters. Make certain lifting equipment has adequate capacity. Failure to use adequate lifting equipment may result in property damage, personal injury or death.

6. Install winch onto tractor using studs to aid alignment. Access to tractor PTO shaft may be accomplished by removing either the belly pan or floor plate from tractor. Attach PTO shaft to tractor

shaft using fasteners, items 11 & 13. Apply Loctite 242 to threads and torque to 21 lb•ft (28 N•m). (Note: Discard inch fasteners supplied with drive-shaft at tractor end, use metric fasteners, items 11 & 13).

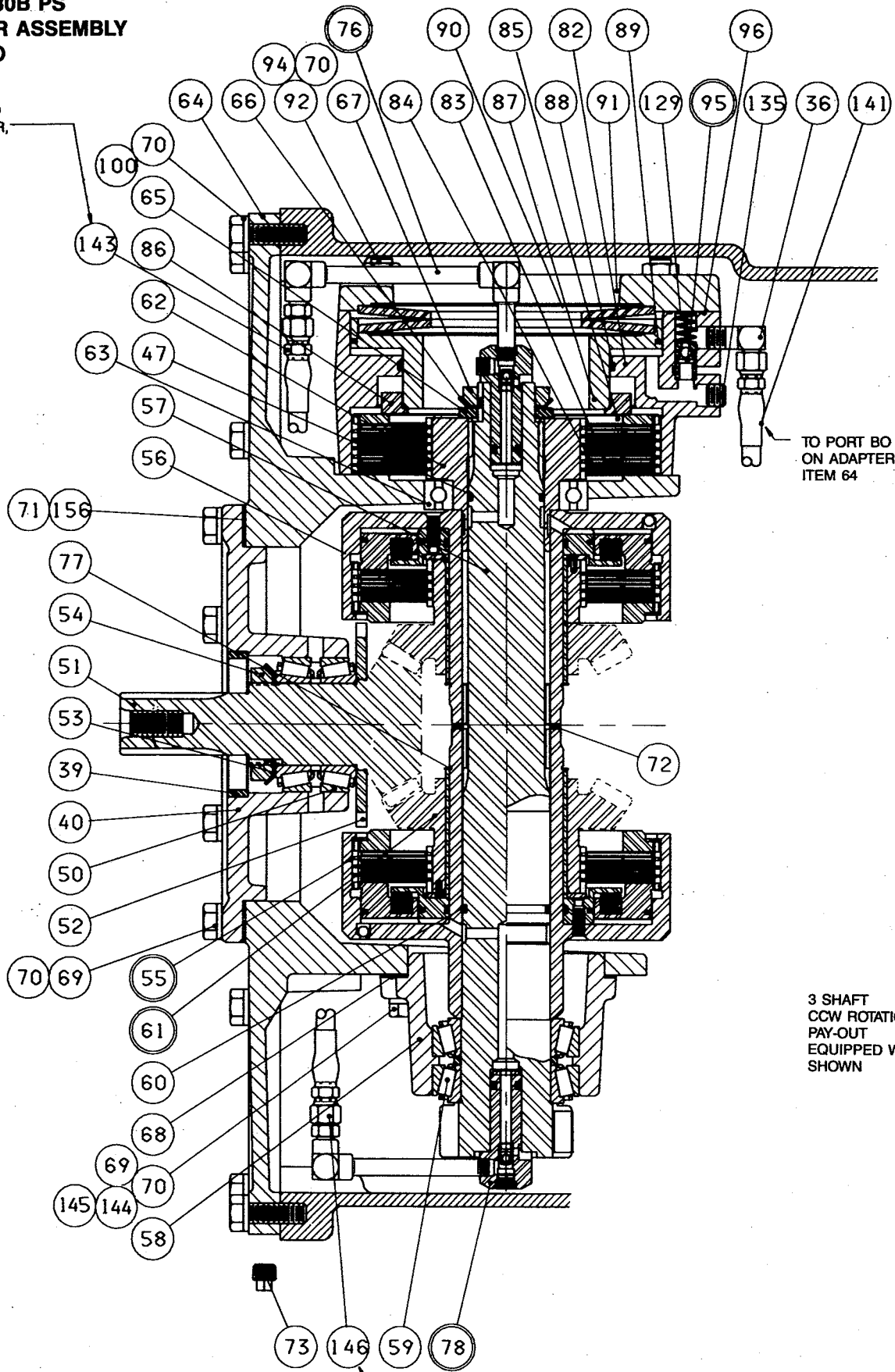
7. If PTO shaft interference is noticed during installation, first try to reposition the winch away from the contact point by loosening the winch mounting fasteners and carefully prying or hoisting the winch to a more favorable position. If necessary, grind the contact point of the PTO aperture in the tractor rear faceplate to provide a minimum clearance of 1/8 in. (3 mm). Clean, prime and paint all affected surfaces after grinding.
8. Fasten winch to tractor with nuts and cap screws, items 5 and 6. Apply Loctite 271 to threads and torque to 640 lb-ft (102 N•m).
9. Install cover plate halves, item 14, with fasteners, items 15 & 16.
10. Reinstall belly pan or floor plate on tractor as required.

⚠ CAUTION

Fill winch to proper level with recommended oil BEFORE starting tractor. Bearing and gear damage may result if tractor or winch is run without oil.

**MODEL 30B PS
ADAPTER ASSEMBLY
STD. PTO**

TO PORT PO
ON ADAPTER,
ITEM 64



TO PORT BO
ON ADAPTER,
ITEM 64

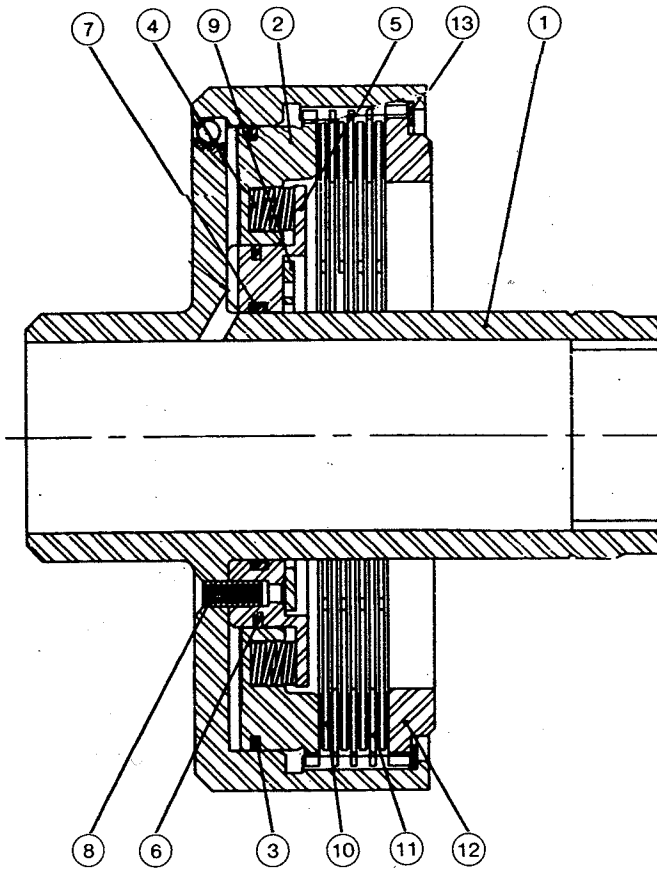
3 SHAFT
CCW ROTATION
PAY-OUT
EQUIPPED WINCH
SHOWN

TO PORT HI
ON ADAPTER,
ITEM 64

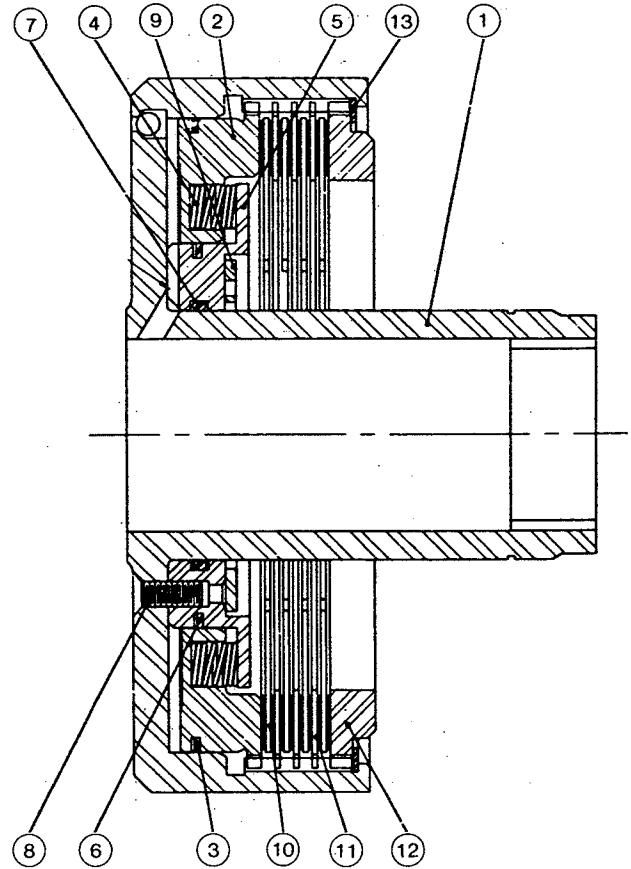
**MODEL 30B PS
ADAPTER ASSEMBLY**

ITEM	PART NO.	DESCRIPTION	QTY.
36	31342	ELBOW	1
39	27882	PILOT RING	1
40	27881	PTO CARRIER	1
47	13838	O-RING	1
50	27893	BEARING CONE SPACER	1
	30952	BEARING CUP	2
	30953	BEARING CONE	2
51	26158	BEVEL PINION (D RATIO) 18T	1
	26160	BEVEL PINION (E RATIO) 14T	1
52	69947	PUMP PINION	1
53	26220	BEARING LOCKWASHER	1
54	22366	BEARING LOCKNUT	1
55	81778	CLUTCH ASSEMBLY (GEAR SIDE)	AR
56	81779	CLUTCH ASSEMBLY (BRAKE SIDE)	AR
*	26060	SPACER (NOT SHOWN) USED ON REEL IN ONLY WINCHES	AR
57	27894	CLUTCH SHAFT (3 SHAFT WINCH)	1
	27895	CLUTCH SHAFT (4 SHAFT WINCH)	1
58	27544	3 SHAFT CLUTCH CARRIER	1
	61739	4 SHAFT CLUSTER GEAR CARRIER ASSEMBLY (PAGE 16)	1
59	70080	BEARING CUP	2
	70081	BEARING CONE	2
	27626	SPACER	1
60	72101	O-RING	1
61	81780	BEVEL GEAR (D RATIO) 38T	1
	81782	BEVEL GEAR (E RATIO) 39T	1
61A	75297	PIN (SUPPLIED WITH ITEM 61)	AR
61B	26118	BUSHING (SUPPLIED WITH ITEM 61)	AR
62	27897	BRAKE HUB	1
63	26122	BEARING	1
64	26048	ADAPTER	1
65	27899	WASHER	1
66	26219	BEARING LOCKWASHER	1
67	31073	BEARING NUT	1
68	26173	CLUTCH CARRIER SHIM SET	1
69	13938	CAPSCREW (1/2 NC x 1/4, HEX GD5)	9
70	11026	LOCKWASHER (1/2)	20
71	26172	PTO CARRIER SHIM SET	1
72	26168	SHIM SET (REQUIRED FOR REEL-OUT EQUIPPED WINCHES)	1
73	19034	PLUG	1
76	82059	TUBE ASSEMBLY (BRAKE SIDE) SEE PAGE 15 FOR DETAIL BREAKDOWN	1
77	26596	SNAP RING	AR
78	81825	TUBE ASSEMBLY (GEAR SIDE, 4 SHAFT) SEE PAGE 15 FOR DETAIL BREAKDOWN	1
	81824	TUBE ASSEMBLY (GEAR SIDE, 3 SHAFT) SEE PAGE 15 FOR DETAIL BREAKDOWN	1
82	26052	BRAKE HOUSING	1
83	70636	FRICTION DISC	6
84	69699	WAVED DISC	6
85	70293	PRESSURE PLATE	1
86	26059	BRAKE SPACER	1
87	26054	BRAKE PISTON	1
88	10330	O-RING	1
89	26102	LATHE CUT RING	1
90	70255	BRAKE SPRING	2
91	26053	BRAKE COVER HOUSING	1
92	26167	STUD	4
94	26145	NUT, HEX (1/2 - 13 GD5)	4
95	81765	SPOOL ASSEMBLY	1
96	22454	O-RING	1
100	13413	CAPSCREW (1/2 NC x 1/2 HEX GD5)	6
129	26329	SPRING	1
135	70120	PLUG	1
141	26414	HOSE ASSEMBLY, BRAKE (15 in., 381 mm)	1
143	26414	HOSE ASSEMBLY, BRAKE SIDE, 3 SHAFT (15 in., 381 mm)	AR
144	26415	HOSE ASSEMBLY, BRAKE SIDE, 4 SHAFT (17 in., 432 mm)	AR
	26425	STUD, HYDRAULIC TUBE SUPPORT	1
145	11788	NUT, HEX (1/2 - 13 GD5)	1
146	26414	HOSE ASSEMBLY, GEAR SIDE, 4 SHAFT (15 in., 381 mm)	AR
	26415	HOSE ASSEMBLY, GEAR SIDE, 3 & 4 SHAFT (17 in., 432 mm)	AR
156	26341	PTO CARRIER GASKET	1

**MODEL 30B PS
CLUTCH ASSEMBLY**



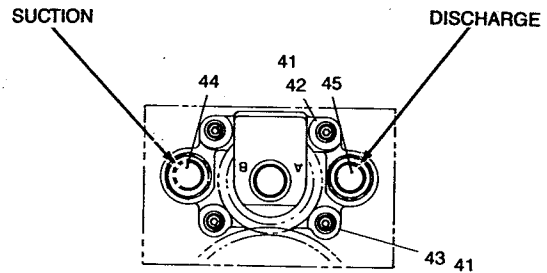
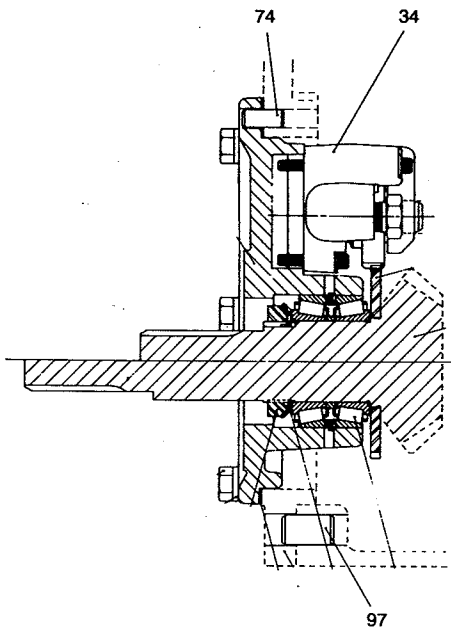
81778
ASSEMBLY



81779
ASSEMBLY

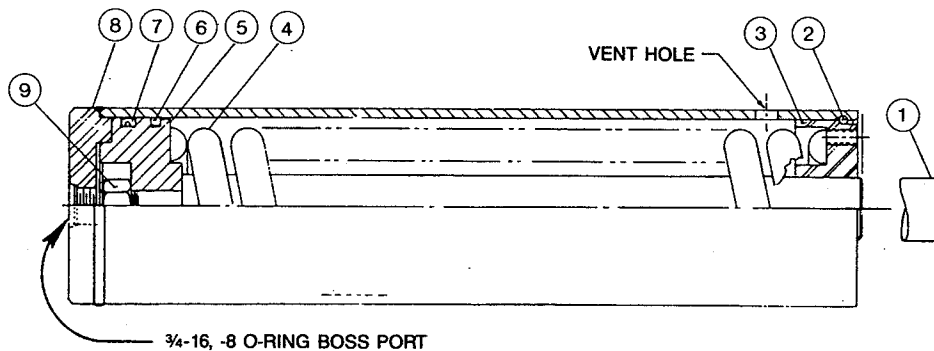
ITEM	PART NO.	DESCRIPTION	QTY.
1	26062	CLUTCH HOUSING (81778 ASSEMBLY) HAUL-IN	1
1	26063	CLUTCH HOUSING (81779 ASSEMBLY) (PAY-OUT ONLY)	1
2	26065	CLUTCH PISTON	1
3	26103	LATHE CUT RING	1
4	26137	SPRING	8
5	26554	CLUTCH PILOT	1
6	26104	LATHE CUT RING	1
7	72103	O-RING	1
8	21333	CAPSCREW, HEX SOCKET, FLAT COUNTERSUNK (1/4 - 20 x 3/4 G8)	3
9	26117	THRUST WASHER	1
10	70636	FRICTION DISC	4
11	69699	WAVED DISC	3
12	26755	PRESSURE PLATE	1
13	26147	RETAINING RING	1

**MODEL 30B PS
PUMP & ACCUMULATOR**



ITEM	PART NO.	DESCRIPTION	QTY.
34	68772	PUMP	1
41	11015	LOCKWASHER (1/4)	1
42	25866	CAPSCREW (1/4 NC x 3 GD8, HEX SOCKET)	2
43	75231	CAPSCREW (1/4 NC x 1 1/2 GD8, HEX SOCKET)	2
44	26240	MALE CONNECTOR	1
45	26403	45° ELBOW	1
74	10318	DOWEL PIN	1
97	26667	DOWEL PIN	2

**ACCUMULATOR
ASSEMBLY**



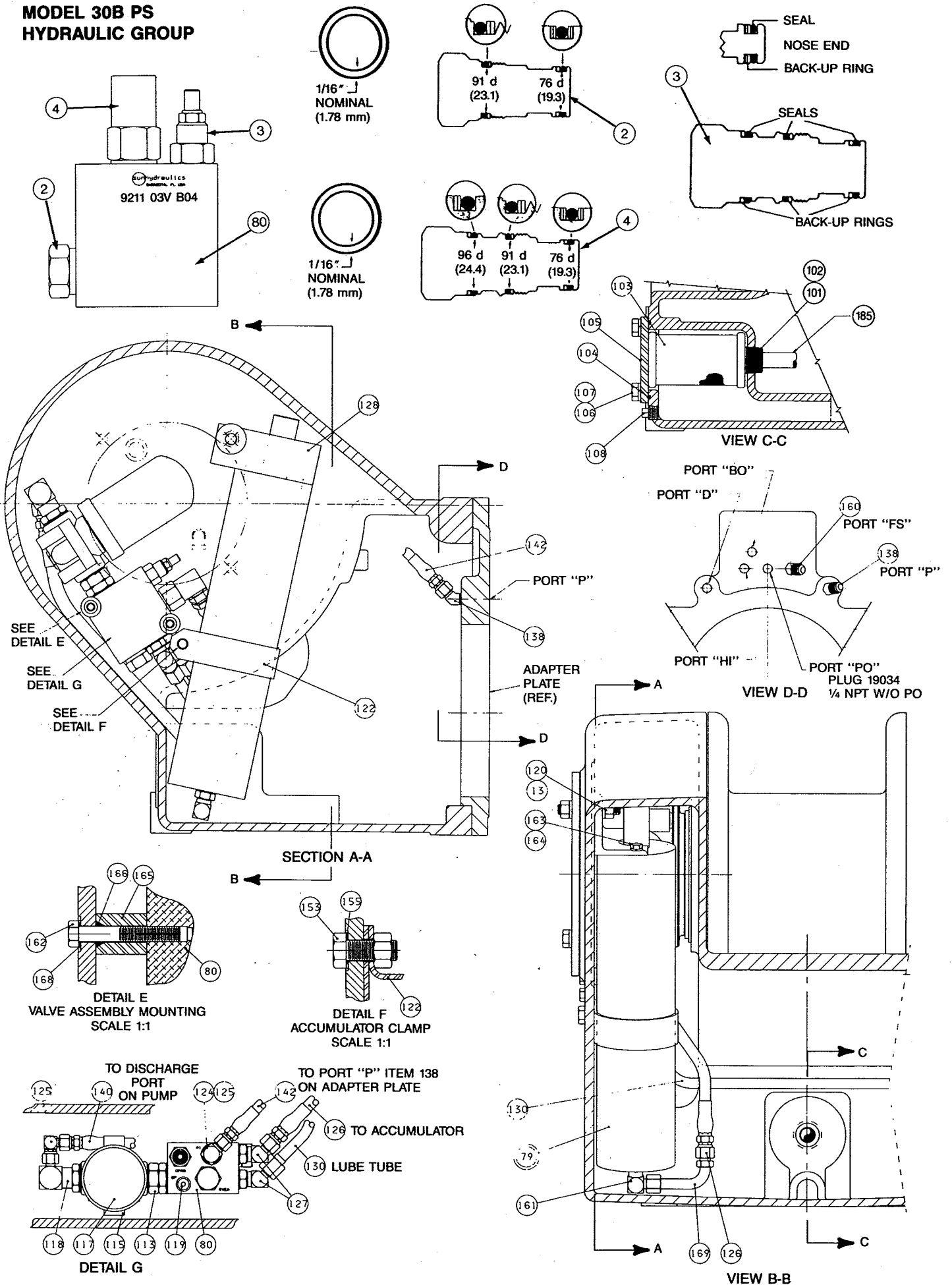
⚠ WARNING

**2,000 LB. (900 Kg) SPRING
PRELOAD—USE PRESS
FOR DISASSEMBLY PER
SERVICE INSTRUCTIONS
IN SERVICE BULLETIN 95.
PROPERTY DAMAGE,
SEVERE PERSONAL
INJURY OR DEATH MAY
RESULT IF ROD GUIDE
REMOVAL IS ATTEMPTED
WITHOUT A PRESS.**

ITEM	PART NO.	DESCRIPTION	QTY.
1	NSS	ROD	1
2	27836	RETAINING RING	1
3	NSS	ROD GUIDE	1
4	NSS	SPRING	1
5	NSS	PISTON	1
6	27833	CAST IRON PISTON RING	1
7	27832	SEAL ASSEMBLY	1
8	NSS	TUBE ASSEMBLY	1
9	NSS	NUT	1
—	62131	SEAL KIT (CONTAINS ITEMS 2, 6 & 7)	

NSS — Not Serviced Separately

**MODEL 30B PS
HYDRAULIC GROUP**



**MODEL 30B PS
HYDRAULIC GROUP
STD. PTO**

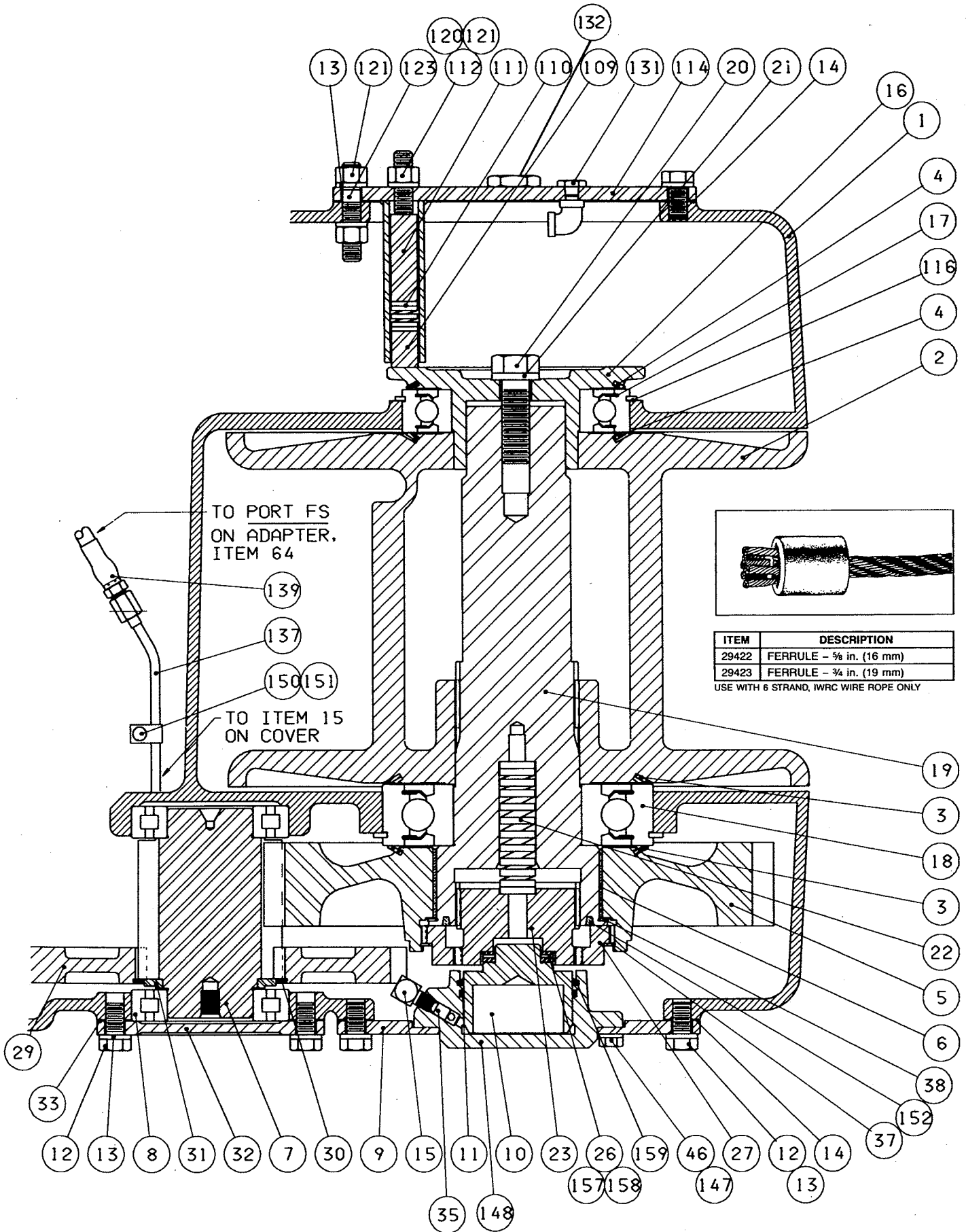
ITEM	PART NO.	DESCRIPTION	QTY.
80	29646	UNLOADING VALVE ASSEMBLY	1
2	40165	CHECK VALVE	1
	29873	CHECK VALVE SEAL KIT	1
3	40166	UNLOADING VALVE CARTRIDGE	1
	29874	UNLOADING VALVE CARTRIDGE SEAL KIT	1
4	40167	RELIEF VALVE	1
	29872	RELIEF VALVE SEAL KIT	

NOTE: Seal kits contain 2 sets of o-rings and back-up rings. Use 1/16 in. (1.59 mm) o-rings and back-up rings.

*Plug used in this location for non-payout winches P/N 19034.

ITEM	PART NO.	DESCRIPTION	QTY.
79	81959	ACCUMULATOR ASSEMBLY (REFER TO PAGE 9)	1
80	29646	UNLOADING VALVE	1
101	26164	ADAPTER, STRAINER	1
102	24429	O-RING	1
103	70189	STRAINER	1
104	21283	O-RING	1
105	26174	STRAINER COVER	1
106	22697	CAPSCREW, HEX HEAD (1/2 NC x 1 GD5)	4
107	11026	LOCKWASHER (1/2)	4
108	23095	PLUG (3/8 NPT)	2
113	29650	UNION	1
115	29644	FILTER HEAD	1
117	29645	FILTER ELEMENT	1
118	29647	90° ELBOW	1
119	69325	PLUG (-4 ORB)	1
120	23583	NUT, JAM (1/2 NC)	2
122	29649	ACCUMULATOR BRACKET	1
124	31286	ADAPTER	1
125	31426	90° UNION (-6 JIC)	2
126	29823	HOSE ASSEMBLY	1
127	69605	ELBOW	2
128	28809	ACCUMULATOR MOUNTING ANGLE	1
130	29651	LUBE TUBE	1
138	31334	45° ELBOW	1
140	29648	HOSE ASSEMBLY (34 in., 134 mm)	1
142	29657	HOSE ASSEMBLY (23 in., 91 mm)	1
153	13938	CAPSCREW (1/2 NC x 1 1/4 GD5, HEX)	
155	72144	SEALING WASHER	1
160	31333	45° ELBOW	1
161	70109	90° ELBOW	1
162	11778	CAPSCREW, HEX HEAD (3/8 - 16 x 2 1/2 GD5)	2
163	11766	CAPSCREW, HEX HEAD (5/16 - 18 x 7/8 GD5)	2
164	11024	LOCKWASHER (5/16)	2
165	29652	STANDOFF SPACER	2
166	25948	O-RING	2
168	72142	SEALING WASHER	2
169	29817	ELBOW	1
185	26231	SUCTION TUBE	1

**MODEL 30B PS
DRUM GROUP**

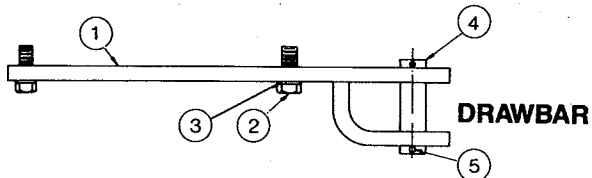


**MODEL 30B PS
DRUM GROUP**

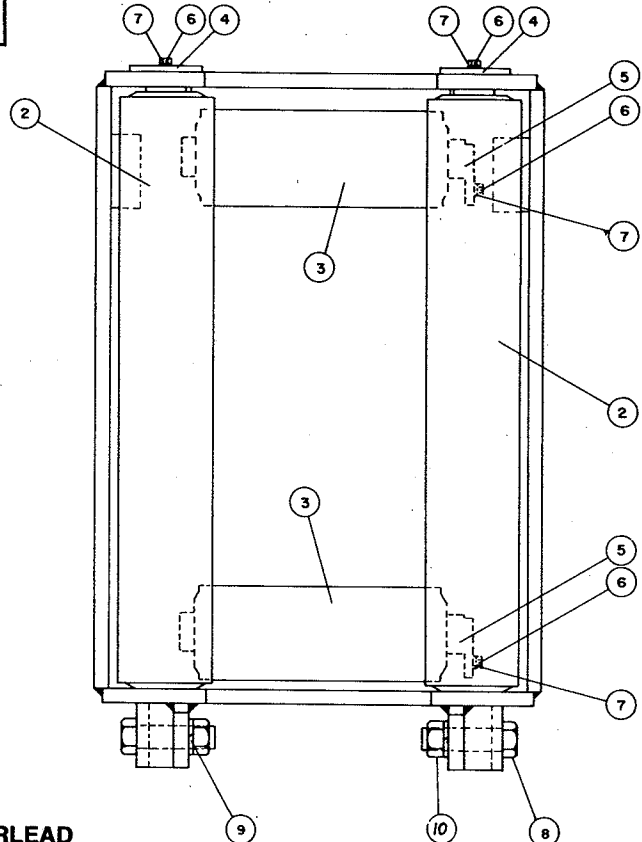
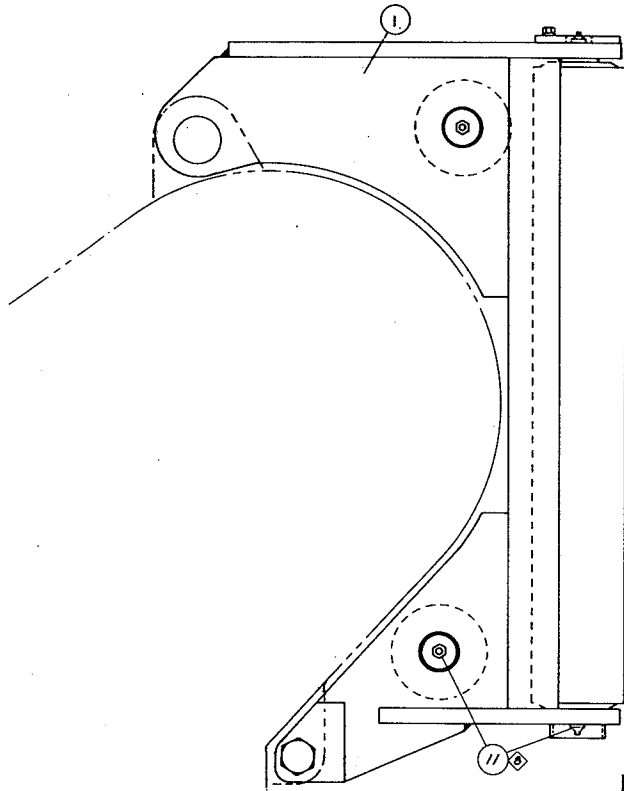
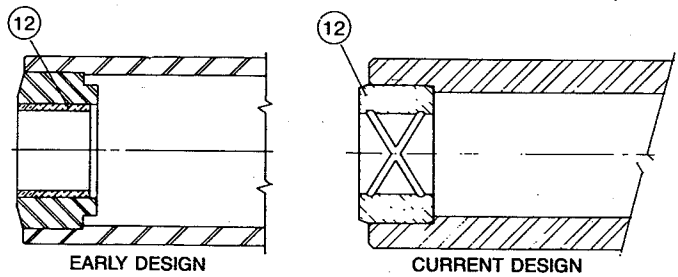
ITEM	PART NO.	DESCRIPTION	QTY.
1	27546	WINCH HOUSING	1
2	27520	CABLE DRUM	1
3	26100	LATHE CUT RING	2
4	26101	LATHE CUT RING	2
5	27383	BULL GEAR	1
6	27400	BUSHING	1
7	26779	INTERMEDIATE GEAR	1
8	26116	ROLLER BEARING	2
9	27379	GEAR SIDE COVER PLATE	1
10	27378	FREESPOOL PISTON	1
11	69858	O-RING	1
12	22697	CAPSCREW, HEX HEAD (1/2 - 13 x 1 GD5)	11
13	11073	WASHER (1/2 in.)	13
14	26171	COVER GASKET	2
15	21163	ELBOW	1
16	27755	DRAG BRAKE SPINDLE ADAPTER	1
17	26115	BALL BEARING W/SNAP RING	1
18	26114	BALL BEARING W/SNAP RING	1
19	26077	DRUM SHAFT	1
20	78453	CAPSCREW, HEX HEAD (3/4 NC x 2 1/2 GD8)	1
21	13435	LOCKWASHER (3/4 in.)	1
22	27387	FREESPOOL SPRING	1
23	27715	SPOOL GEAR	1
26	24305	BEARING	1
27	27406	COLLAR GEAR	1
29	26777	REDUCTION GEAR	1
30	26775	SNAP RING	1
31	26776	SPACER	1
32	26109	COVER PLATE	1
33	26170	COVER GASKET	1
35	81913	DUMP VALVE SPOOL	1
37	27391	RETAINING RING	1
38	27401	THRUST WASHER	1
46	22693	CAPSCREW, HEX HEAD (3/8 - 16 x 3/4 GD5)	3
109	27321	DRAG BRAKE DISC	1
110	26139	SPRING	1
111	26162	SPACER BAR	1
112	26151	SET SCREW (1/2 - 13 x 1 3/4)	1
114	29660	BRAKE SIDE COVER	1
116	27476	BRAKE BEARING SHIM	1
120	25829	SEALING WASHER, 1/2	1
121	11788	NUT, HEX (1/2 - 13)	3
123	28805	STUD	1
131	69777	BREATHER BENT	1
132	70118	FILL PLUG	1
137	27326	FREESPOOL TUBE	1
139	26412	HOSE ASSEMBLY (15 1/4 in., 387 mm)	1
147	72142	SEALING WASHER, 3/8	3
148	27561	FREESPOOL CYLINDER	1
150	30990	CLIP	1
151	31218	SCREW	1
152	27550	FELT SEAL	1
157	24306	THRUST WASHER	1
158	73294	THRUST RACE	1
159	27420	ROD WIPER	1

NOT SHOWN: Fill Plug P/N 70118

**MODEL 30B PS
FAIRLEAD ASSEMBLY & DRAWBAR**



CLEAN TAPPED HOLES IN WINCH HOUSING BEFORE INSTALLING DRAWBAR. TORQUE CAPSCREWS TO 380 FT. LBS.



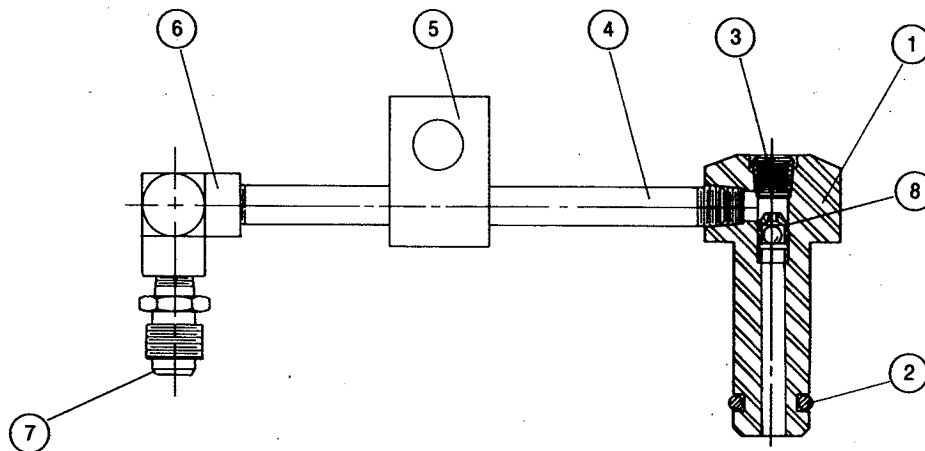
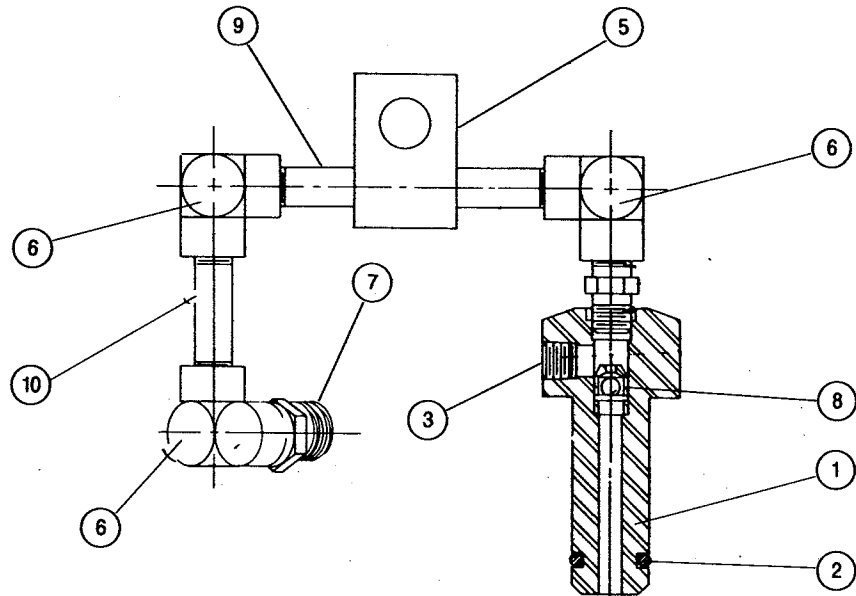
FAIRLEAD

ITEM	PART NO.	DESCRIPTION	3-ROLLER QTY.	4-ROLLER QTY.
	81820	COMPLETE 4 ROLLER FAIRLEAD	—	1
	81821	COMPLETE 3 ROLLER FAIRLEAD	1	—
1	26665	FAIRLEAD BODY	1	1
2	82189	ROLLER ASSEMBLY (LONG, INCLUDES BUSHINGS)	2	2
3	82188	ROLLER ASSEMBLY (SHORT, INCLUDES BUSHINGS)	1	2
4	81840	ROLLER SHAFT (LONG)	2	2
5	81837	ROLLER SHAFT (SHORT)	1	2
6	21961	CAPSCREW (3/8 - 16 x 1 GR.5)	3	4
7	18003	LOCKWASHER (3/8)	3	4
8	72366	CAPSCREW (3/4 - 10 x 3 1/4)	2	2
9	13435	LOCKWASHER (3/4)	2	2
10	13444	HEX NUT (3/4 - 10)	2	2
11	18047	GREASE FITTING	6	8
12	77344	BUSHING - EARLY DESIGN 1.625 in. (41.3 mm) OD	6	8
	40249	BUSHING - CURRENT DESIGN 2.375 in. (60.3 mm) OD	6	8

DRAWBAR KIT - 61926 (INCLUDES ITEMS 1-5)

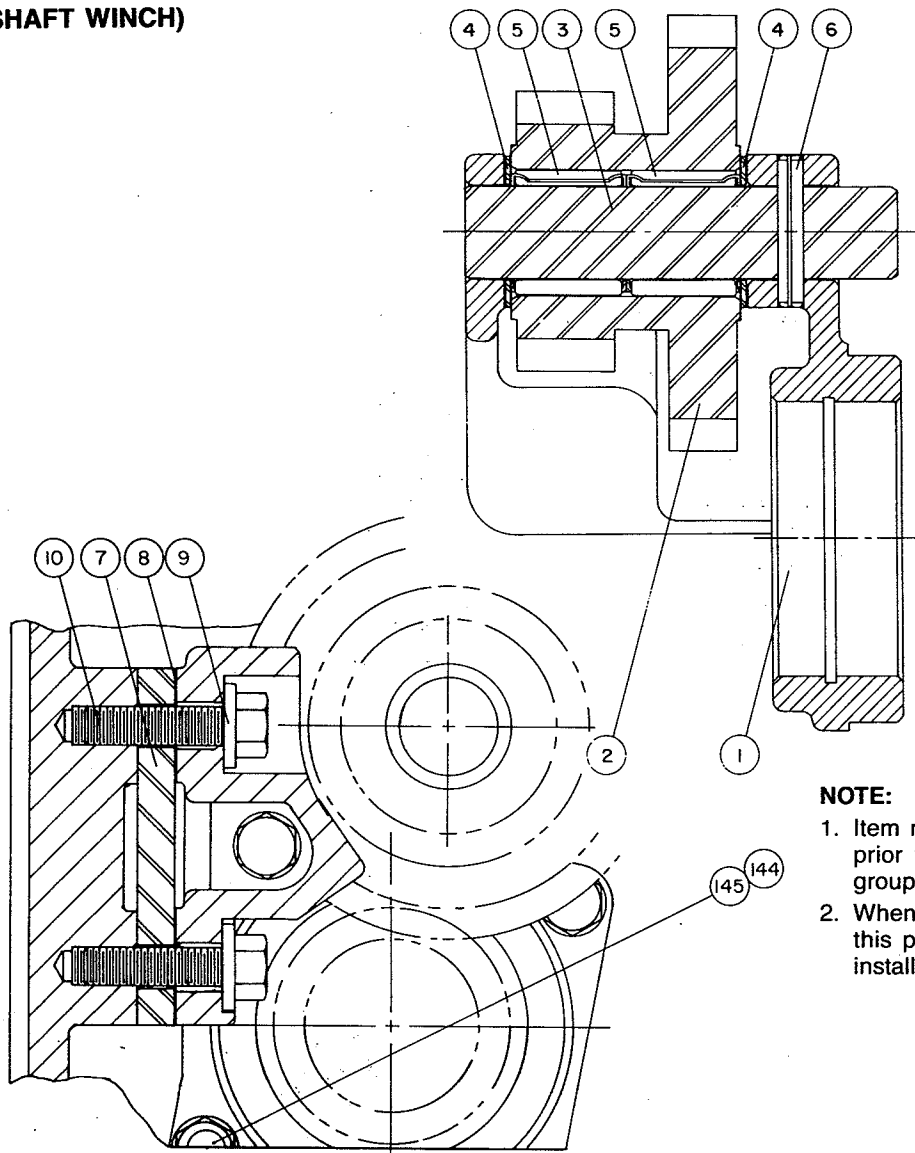
ITEM	PART NO.	DESCRIPTION	QTY.
1	27087	DRAWBAR	1
2	70691	CAPSCREW	6
3	13435	LOCKWASHER	6
4	27241	DRAWBAR PIN	1
5	27242	COTTER PIN	2

**MODEL 30B PS
TUBE ASSEMBLIES**



ITEM	PART NO.	DESCRIPTION	QTY. PER ASSY.
1	26163	HYDRAULIC TUBE	1
2	26201	O-RING	1
3	22374	PIPE PLUG	1
4	26246	PIPE NIPPLE	1
5	26427	GUIDE BLOCK	1
6	24524	FEMALE PIPE ELBOW	AR
7	75956	MALE CONNECTOR	AR
8	81913	DUMP VALVE SPOOL	1
9	26245	PIPE NIPPLE	1
10	76118	PIPE NIPPLE	1

**MODEL 30B PS
CLUSTER GEAR ASSEMBLY
(4-SHAFT WINCH)**



NOTE:

1. Item no. 1 must be mounted in place prior to assembly of remaining parts group items.
2. When a gear side clutch is used with this parts group items 144 & 145 are installed in location shown.

ITEM	PART NO.	DESCRIPTION	QTY.
1	26068	CLUTCH SHAFT CARRIER	1
2	26097	CLUSTER GEAR	1
3	26099	CLUSTER GEAR SHAFT	1
4	24306	THRUST WASHER	2
5	26120	BEARING	2
6	12031	ROLLPIN ($\frac{5}{16} \times 2$) - EARLY PRODUCTION	1
6	75310	ROLLPIN ($\frac{5}{16} \times 1$) - CURRENT PRODUCTION	1
7	26578	SPACER	1
8	26570	SHIM SET (2 ea. - .005, .007)	2
9	32220	WASHER	2
10	13421	CAPSCREW ($\frac{1}{2}$ - 13 NC \times 2 GR 5)	2
144	26425	STUD (WITH GEAR SIDE CLUTCH ONLY)	1
145	11788	NUT ($\frac{1}{2}$ - 13 NC) (WITH GEAR SIDE CLUTCH ONLY)	1